

RESOLUTION NO. 1955

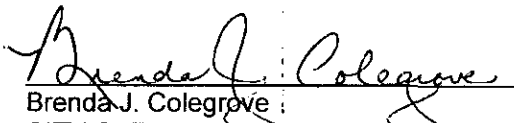
A RESOLUTION OF THE COUNCIL OF THE CITY OF SALISBURY, MARYLAND APPROVING A NEW LOCATION FOR THE DECORATIVE-IRON SAILFISH SCULPTURE FROM URBAN SALISBURY, INC. TO BE INSTALLED AT THE NORTHEAST CORNER OF CARROLL STREET & MILL STREET.


- WHEREAS, the Council of the City of Salisbury is interested in enhancing the landscape of certain roadway rights of way within the City of Salisbury; and
- WHEREAS, previously approved Resolution No. 1742 indicating this sailfish sculpture is to be located immediately east of the easternmost parking lot of the Brew River Restaurant, a location which was not acceptable to the sponsor, Urban Salisbury, Inc. acting on behalf of the Hearn family; and
- WHEREAS, this resolution provides a new location for the sailfish sculpture (northeast corner of Carroll Street and Mill Street) which is acceptable to the sponsor; and
- WHEREAS, Urban Salisbury, Inc. has provided a decorative-iron sailfish sculpture, identified the site for the sculpture, and obtained other sponsors for the design, materials, and fabrication of the sculpture; and
- WHEREAS, architectural-engineering firms, Becker Morgan Group and Davis, Bowen & Friedel, Inc., contributed design services for the sculpture; and
- WHEREAS, the Parkside High School Career & Technology Center contributed the fabrication of the sculpture; and
- WHEREAS, Urban Salisbury, Inc. will pay the \$2,100 cost for Carters Electric Services to install the decorative sculpture; and
- WHEREAS, Salisbury Public Works will review and approve the site, construction of the foundation, and installation of the sculpture at the approved location;

NOW, THEREFORE, BE IT RESOLVED that the Council of the City of Salisbury, Maryland does hereby approve the new location at the northeast corner of Carroll Street and Mill Street for the decorative-iron sailfish sculpture from Urban Salisbury, Inc. for the enhancement of the open space at the approved location.

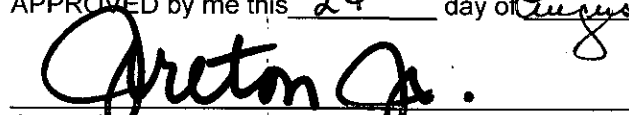
THE ABOVE RESOLUTION was introduced and duly passed at a meeting of the Council of the City of Salisbury, Maryland held on August 23, 2010 and is to become effective immediately upon adoption.

ATTEST:


Brenda J. Colegrove
CITY CLERK


Louise Smith
PRESIDENT, City Council

APPROVED by me this 24th day of August, 2010


James Heton, Jr.
MAYOR, City of Salisbury

City of Salisbury



JAMES IRETON, JR.
MAYOR

JOHN R. PICK
CITY ADMINISTRATOR

LORÉ CHAMBERS
ASSISTANT CITY ADMINISTRATOR

125 NORTH DIVISION STREET
SALISBURY, MARYLAND 21801
Tel: 410-548-3170
Fax: 410-548-3107

PUBLIC WORKS
TERESA GARDNER, P.E.
DIRECTOR

MARYLAND

July 30, 2010

Memorandum for John Pick, City Administrator

Subject: Resolution for Approving New Location for a Decorative Sailfish Sculpture

Attached is a resolution for the approval of a new location for a decorative sailfish sculpture, from Urban Salisbury, Inc., to be installed at the northeast corner of Mill Street and Carroll Street.

This sculpture was accepted by the Council on December 22, 2008 and was originally to be installed on City property immediately east of the easternmost parking lot of the Brew River Restaurant. The City was subsequently asked to install the sculpture at the edge of the Salisbury Marina parking lot and boat-slip pedestrian walkway, approximately 15 feet east of the glass-enclosed boat model, which was not implementable due to utility conflicts. The City was then asked to install the sculpture at the original location, east of Brew River Restaurant. The City contracted Carters Electric Services to install the foundation and sculpture for \$2,100 at the original location in late summer 2009. Installation of the sculpture, at this previously agreed upon location, was then not acceptable to the sponsor, Urban Salisbury, Inc. acting on behalf of the Hearn family.

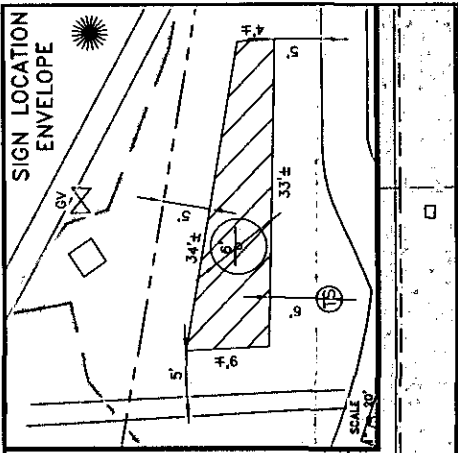
Urban Salisbury, Inc. has identified the new site which is located on the northeast corner of Mill Street and Carroll Street; and, we are requesting Council approval of this site. Urban Salisbury, Inc. also has obtained other sponsors for the design, materials, and fabrication of the decorative sculpture. Davis, Bowen & Friedel, Inc. and Becker Morgan Group provided engineering services for the sculpture. The Parkside High School Career & Technology Center fabricated the decorative sculpture. Urban Salisbury, Inc. will pay the \$2,100 cost for Carters Electric Services to install the decorative sculpture. Salisbury Public Works is to review and approve the decorative-sculpture site, construction of the sculpture foundation, and installation of the sculpture at the approved location.

A site plan and drawings of the decorative sailfish sculpture are attached for clarification.

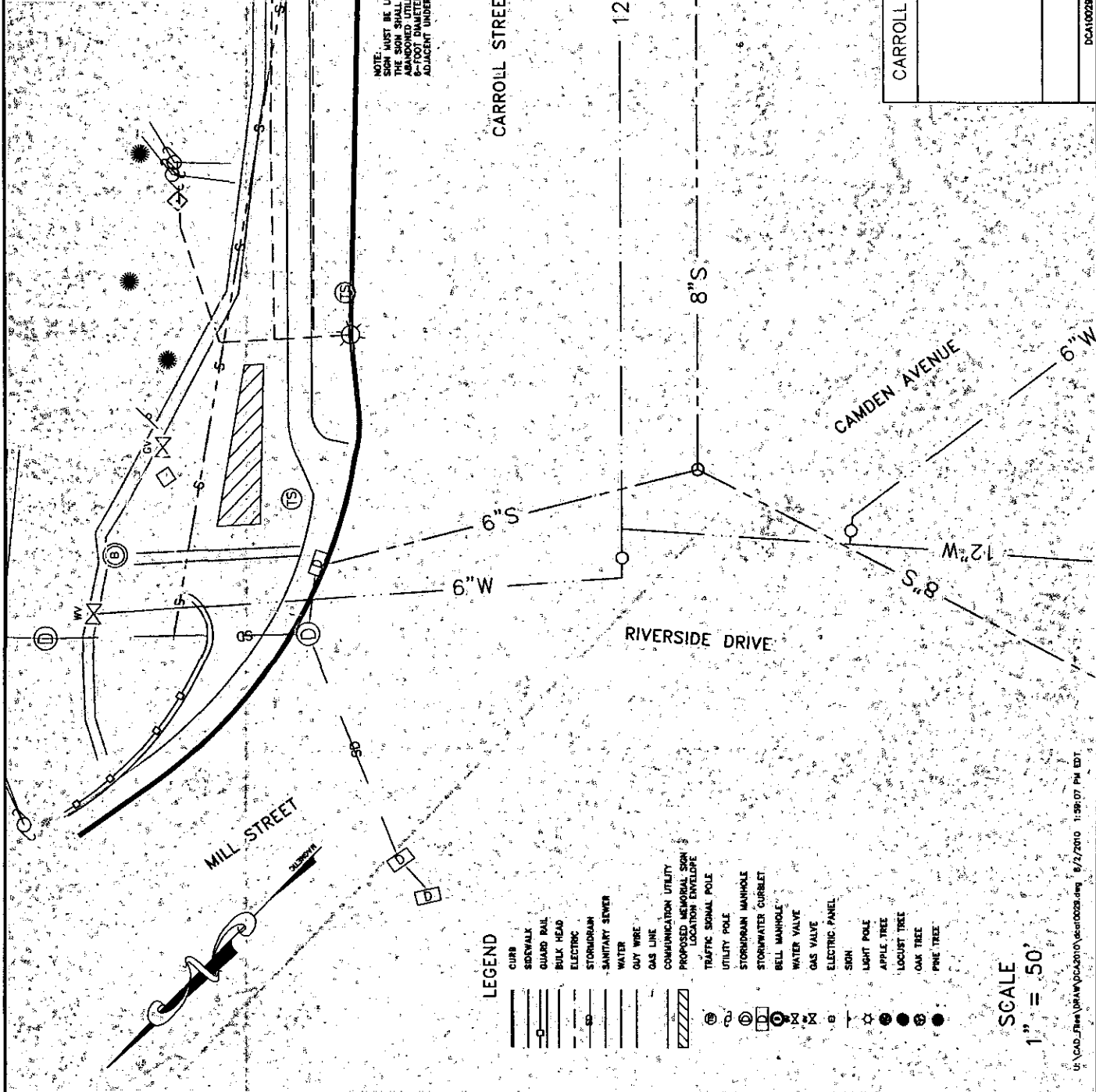
Unless you or the Mayor has further questions, please forward this memorandum to the City Council. For any additional questions you may have, I can be reached at 410/548-3170 or by e-mail, tgardner@ci.salisbury.md.us.

A handwritten signature in black ink, appearing to read "Teresa Gardner".

Teresa Gardner, P.E.
Director of Public Works



NOTE:
SIGN MUST BE LOCATED COMPLETELY WITH IN THE SIGN ENVELOPE. THE CENTER OF THE SIGN SHALL NOT EXCEED THE MINIMUM 8' OFFSET FROM ANY OF THE EXISTING OR ABANDONED UTILITIES IN ORDER TO PRESERVE THE SCULPTURE, LOCATED WITH IN THE SIGN ENVELOPE, FROM INTERFERENCE, DURING FUTURE EXCAVATIONS OF EXISTING ADJACENT UNDERGROUND UTILITIES.




LEGEND

- CURB
- SIDEWALK
- GUARD RAIL
- BULK HEAD
- ELECTRIC
- STORMDRAIN
- SANITARY SEWER
- WATER
- GUY WIRE
- GAS LINE
- COMMUNICATION UTILITY
- PROPOSED MEMORIAL SIGN LOCATION ENVELOPE
- TRAFFIC SIGNAL POLE
- UTILITY POLE
- STORMDRAIN MANHOLE
- STORMWATER CURBLET
- BELL MANHOLE
- WATER VALVE
- GAS VALVE
- ELECTRIC PANEL
- SIGN
- LIGHT POLE
- APPLE TREE
- LOCUST TREE
- OAK TREE
- PINE TREE

SCALE
1" = 50'

CARROLL STREET MEMORIAL SIGN LOCATION

CITY OF SALISBURY, MARYLAND



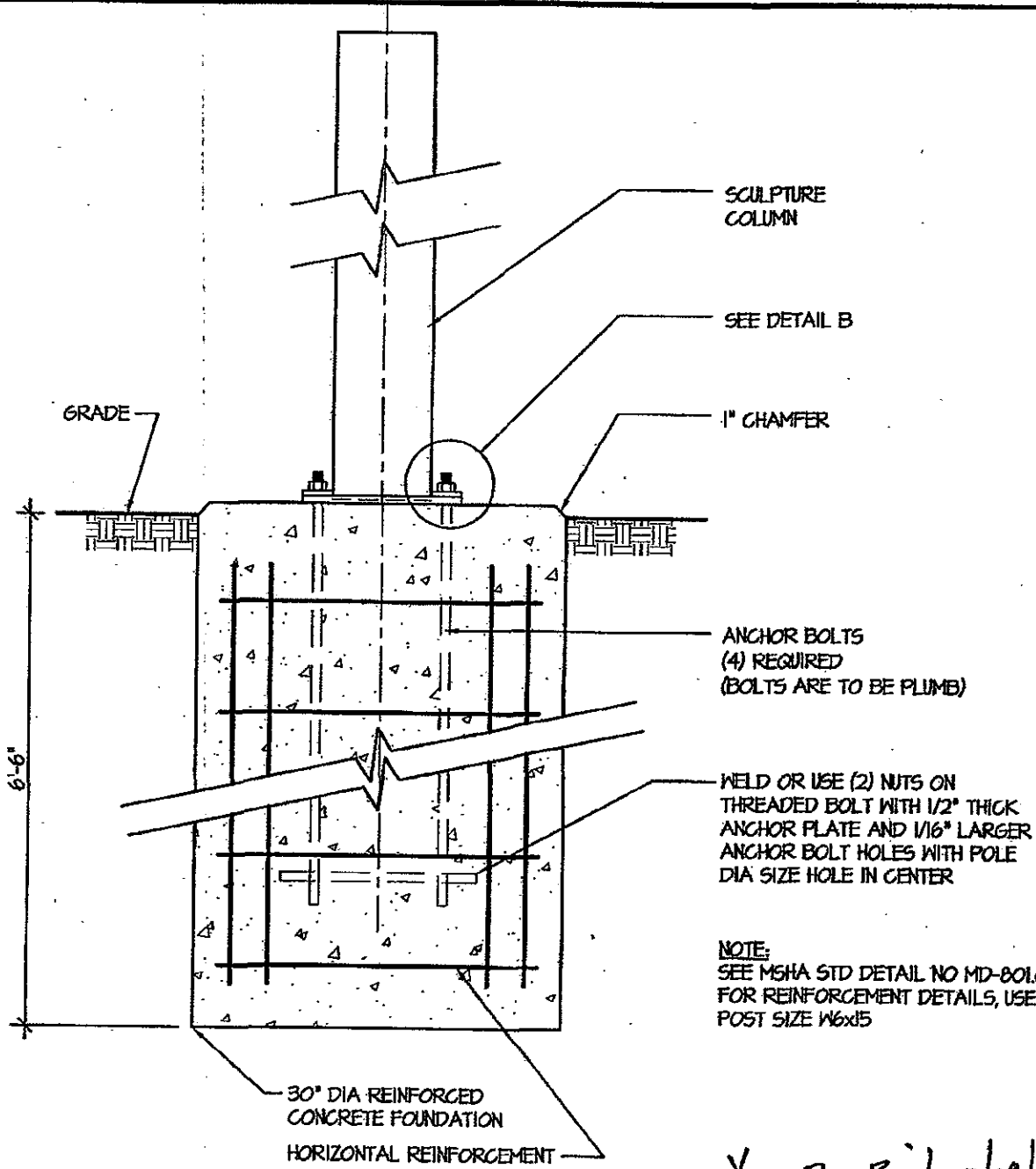
DEPARTMENT OF PUBLIC WORKS

SIGN LOCATION

DCA10029

SHEET 1 OF 1





NOTE:
 SEE MSHA STD DETAIL NO MD-801.04
 FOR REINFORCEMENT DETAILS, USE
 POST SIZE W6x5

Xc: Ray Birch 7/19/06

SECTION A-A



DAVIS, BOWEN & FRIEDEL, INC.
 ARCHITECTS, ENGINEERS & SURVEYORS

SALISBURY, MARYLAND 410-543-9091
 MILFORD, DELAWARE 302-424-1443

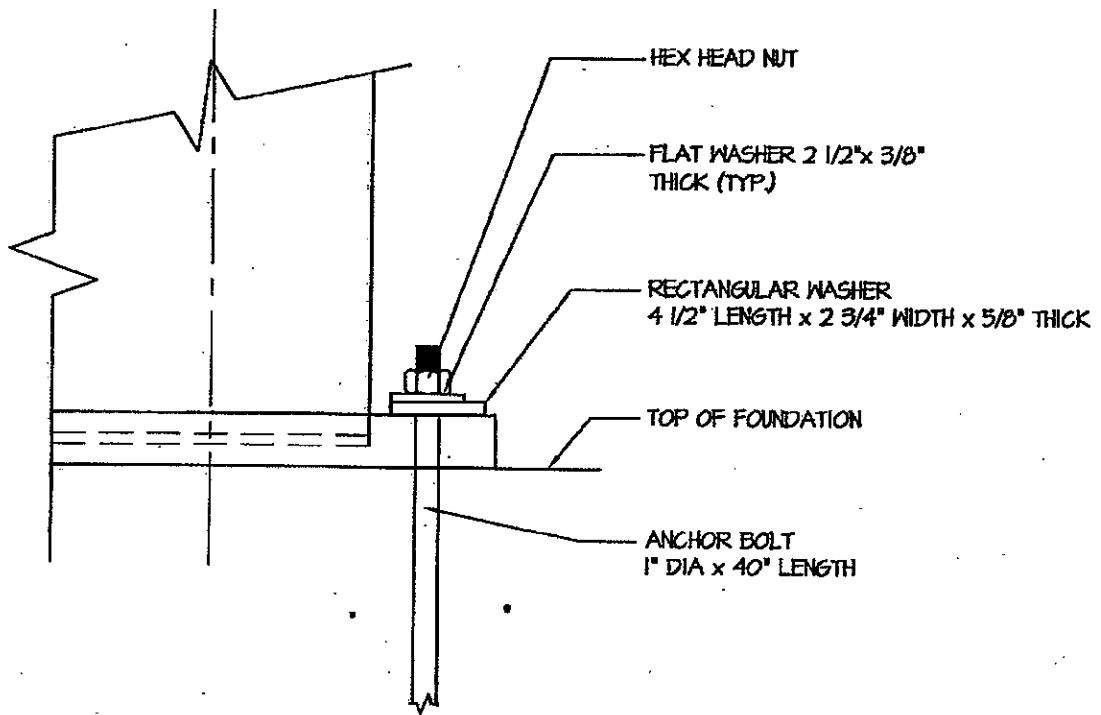
**URBAN
 SALISBURY
 SCULPTURES**

COPYRIGHT © 2006

Dwg.No.:

SK2

Date: 2/1/06 Scale: NTS Proj.No.: 1019A001



HEX HEAD NUT

FLAT WASHER 2 1/2" x 3/8" THICK (TYP)

RECTANGULAR WASHER 4 1/2" LENGTH x 2 3/4" WIDTH x 5/8" THICK

TOP OF FOUNDATION

ANCHOR BOLT 1" DIA x 40" LENGTH

DETAIL B

Xo: Day Birch 7/19/06



DAVIS, BOWEN & FRIEDEL, INC.
ARCHITECTS, ENGINEERS & SURVEYORS

SALISBURY, MARYLAND 410-543-9091
MILFORD, DELAWARE 302-424-1441

**URBAN
SALISBURY
SCULPTURES**

COPYRIGHT © 2006

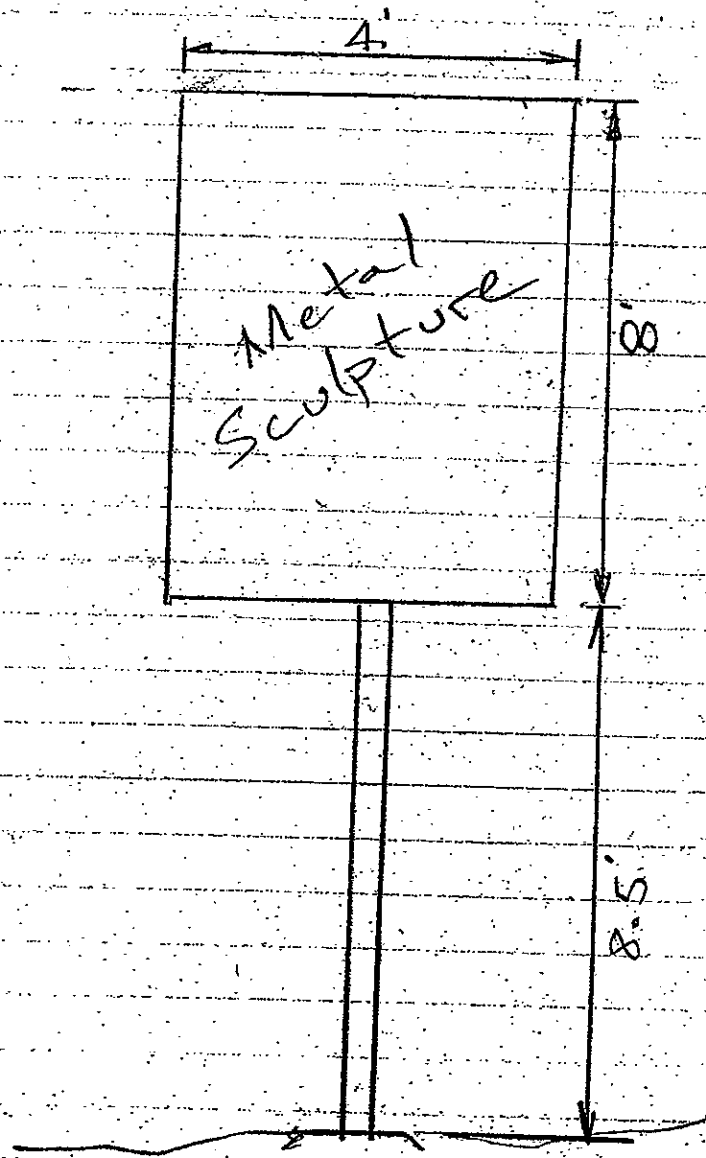
Dwg.No.:

SK1

Date: 2/7/06

Scale: NTS

Proj.No.: 1019A001



Sketch
Typical Decorative-Iron Sculpture