

RESOLUTION NO. 1718  
AS AMENDED ON NOVEMBER 10, 2008

A RESOLUTION OF THE COUNCIL OF THE CITY OF SALISBURY,  
MARYLAND ACCEPTING A DONATION OF PLANTS, MATERIALS,  
AND LABOR FROM THE ROTARY CLUB OF WICOMICO COUNTY  
FOR THE IMPROVEMENT OF THE CITY PARK RAIN GARDEN.

WHEREAS, the City of Salisbury has partnered with the Rotary Club of Wicomico  
County in the development of a rain garden in City Park;

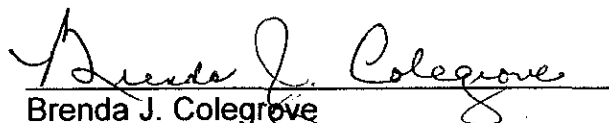
WHEREAS, there are plants in need of replacement in the rain garden;


WHEREAS, the Rotary Club of Wicomico County wishes to donate plants, materials,  
and labor valued at \$995 to improve the rain garden.

NOW, THEREFORE, BE IT RESOLVED that the Council of the City of Salisbury,  
Maryland does hereby accept the donation of \$995 in plants, materials, and labor from  
the Rotary Club of Wicomico County, contingent upon recommendation by the City Park  
Committee

THE ABOVE RESOLUTION was introduced and duly passed at a meeting of the  
Council of the City of Salisbury, Maryland held on November 10, 2008 and is to become  
effective immediately upon adoption.

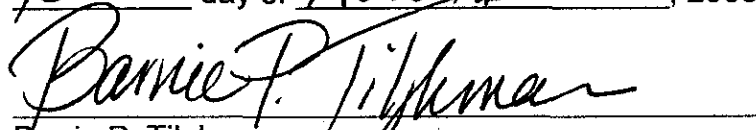
ATTEST:

  
Brenda J. Colegrove  
CITY CLERK

  
Louise Smith  
PRESIDENT, City Council

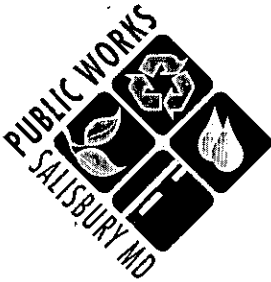
APPROVED by me this

13<sup>th</sup> day of November, 2008

  
Barrie P. Tilghman  
MAYOR, City of Salisbury

October 27, 2008

Memorandum



*A Team of Teams  
Making a Difference!*

TO: John Pick, City Administrator

RE: **Accepting Donation of Plants, Materials, and Labor for  
the City Park Rain Garden**

Attached is a resolution for the acceptance of donated items for the City Park rain garden in accordance with the City's Gift Policy.

The Rotary Club of Wicomico County has offered donate plants, materials and labor valued at \$995 needed to improve the rain garden.

Sincerely,

James S. Caldwell  
Director of Public Works

Enclosure:

JAMES S. CALDWELL, P.E.  
DIRECTOR

NEWELL W. MESSICK III, P.E.  
DEPUTY DIRECTOR

Government Office Building  
125 North Division Street  
Salisbury, MD 21801-4940

Phone: (410) 548-3170

Fax: (410) 548-3107

RECEIVED OCT 28 2008

**Bess' Buds**  
**34593 Sussex Hwy**  
**Laurel, DE 19956**  
**302-875-2507**  
**Fax 302-875-9507**

***Landscaping Estimate***

**ROTARY WHEEL**

- 1 EXISTING BIRCHWOOD VIBRNUM**
- 18 EXISTING BLUE BEARD**
- 18 EXISTING CLETHRA SIXTEEN CANDLES**
- 21 MOPS**
- 30 V. LIRIOPE OR SEDGE**
- 2 YARDS HARDWOOD SHREDDED MULCH**
- LABOR**
- DUMP**

**TOTAL ESTIMATE: \$ 995.00**

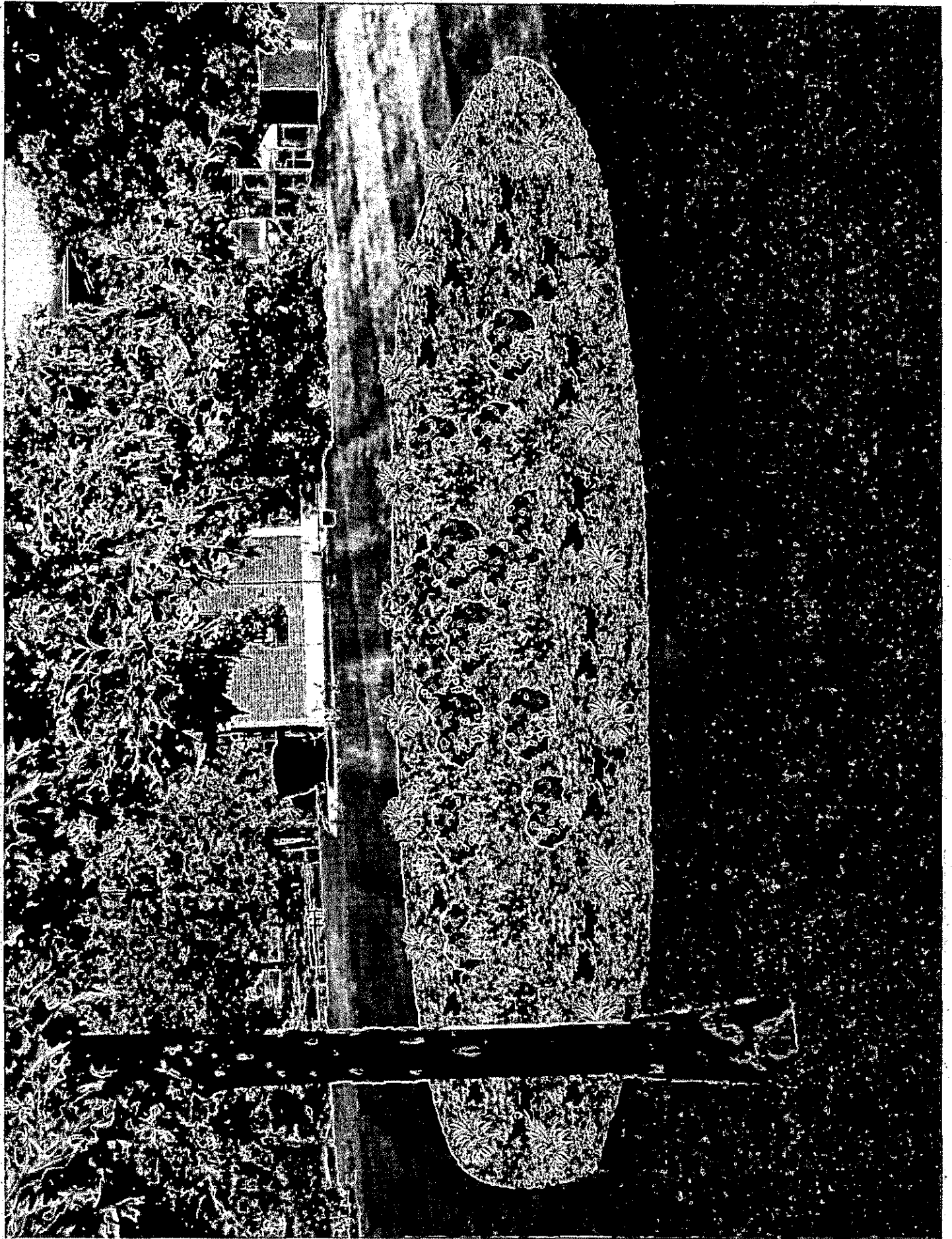
**PANSIES ARE DONATED BY BESS' BUDS**

**SUGGESTION RIF RAFT STONE NEEDS TO BE ADDED TO ORINGAL STONE APP. 2 TONS**

**CORNUS DOGWOOD (YELLOW TWIG) WILL BE REMOVED PLACED TO SIDE FOR  
ELSEWHERE**

**PLANT MATERIAL THAT IS 10 GALLON OR UNDER WILL BE REPLACED AT NO CHARGE AT A TIME FRAME FROM 1 YEAR OF INSTALLATION;  
BUT DUE TO INCREASE IN FUEL COSTS AND LABOR COSTS THE CLIENT WILL BE RESPONSIBLE TO PICK UP THEIR REPLACEMENTS AND  
INSTALL THEM. PLANT MATERIAL THAT IS 15 GALLON OR LARGER WILL BE REPLACED BY BESS' BUDS AT OUR CONVENIENCE AT NO  
CHARGE AT A TIME FRAME FROM 1 YEAR OF INSTALLATION. BESS' BUDS WILL REPLACE ANY PLANT DEAD ONLY 1 TIME. IF THERE IS NO  
LAWN IRRIGATION AT THE TIME OF PLANTING AND A PLANT DIES FROM LACK OF MOISTURE, BESS' BUDS WILL NOT REPLACE AT NO  
CHARGE. PRICES MAY CHANGE DUE TO AVAILABILITY OF PLANT MATERIAL.**

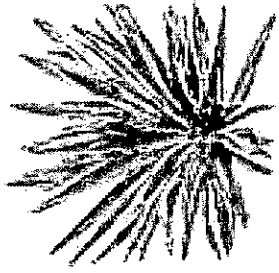




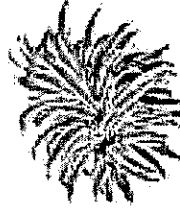
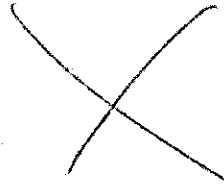


CHAMAECYPARIS (MOP)

PISIFERA 'AUREA  
NANA; 3 GAL.



YUCCA,  
VARIEGATED;  
3 GAL.



LIRIOPE 01,  
EACH