



# Community Facilities and Transportation

Comprehensive Plan Update

Focus Group

May 6, 2025





**May 6th, 2025**

**Comprehensive Plan Update  
Focus Group:  
Transportation & Community  
Facilities**

**Agenda**

- Introduction by DID Staff
  - Slide Presentation
- Focus Group Table Discussions
- Share Your Map and Discuss Highlights with the Group

Thank you for your time and input.  
If you have any questions please reach out to our  
Planning Staff:

Betsy Jackson | [bjackson@salisbury.md](mailto:bjackson@salisbury.md)  
Jennifer Jean | [jjean@salisbury.md](mailto:jjean@salisbury.md)  
Zach White | [zwhite@salisbury.md](mailto:zwhite@salisbury.md)  
Jessica Crenshaw | [jcrenshaw@salisbury.md](mailto:jcrenshaw@salisbury.md)







City of  
**Salisbury**

# Roadmap to Comprehensive Plan

**November 2023**

Planning Commission  
Presentation

**January  
2024**

Community  
Open  
House

**November  
2024**

Survey Results  
Provided to  
DID

**April -  
June 2025**

Public  
Focus  
Groups

**February - April 2025**

- Public Input and Draft review
- Weekly DID Staff Works Sessions

**Summer 2025**

- Redraft Plan
- Planning Commission Public Review & Work-sessions

**Fall 2025**

- Outside Agency Reviews
- Final Edits

**Winter 2025/2026**

- Planning Commission Public Hearing
- Council Work Sessions & Council Public Hearings

**Comprehensive  
Plan Adoption**

*YOU ARE HERE*

<https://salisbury.md/2024-comprehensive-plan-update>





# Community Facilities

Propose the most appropriate and desirable patterns for the general location, character, and extent of public and semipublic facilities.

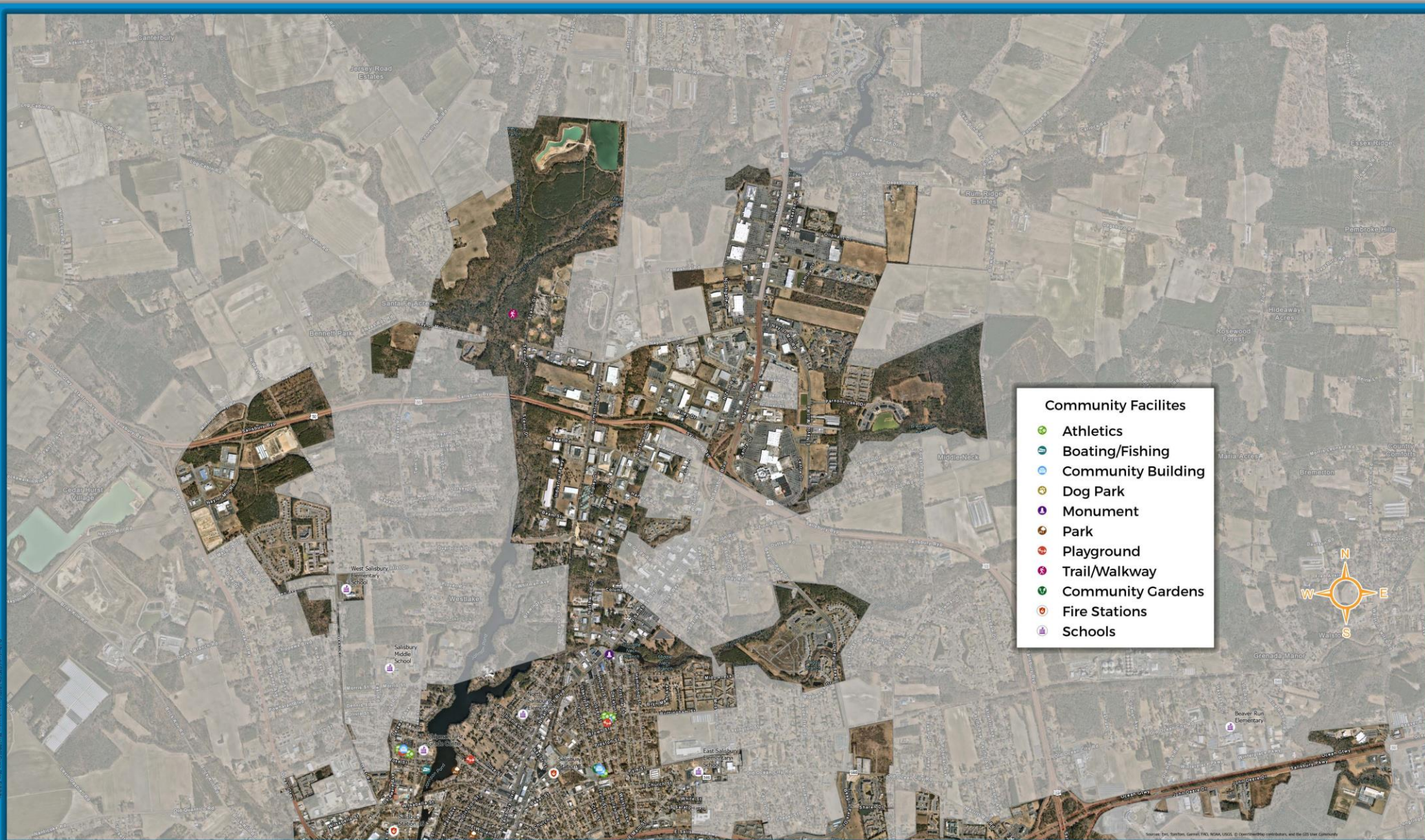
Community facilities may include:

- Fire and Police stations
- Hospitals and other medical facilities
- Libraries, schools, and other educational facilities
- Parks and recreation areas
- Public office or administrative facilities





# Community Facilities



## North Salisbury Community Facilities

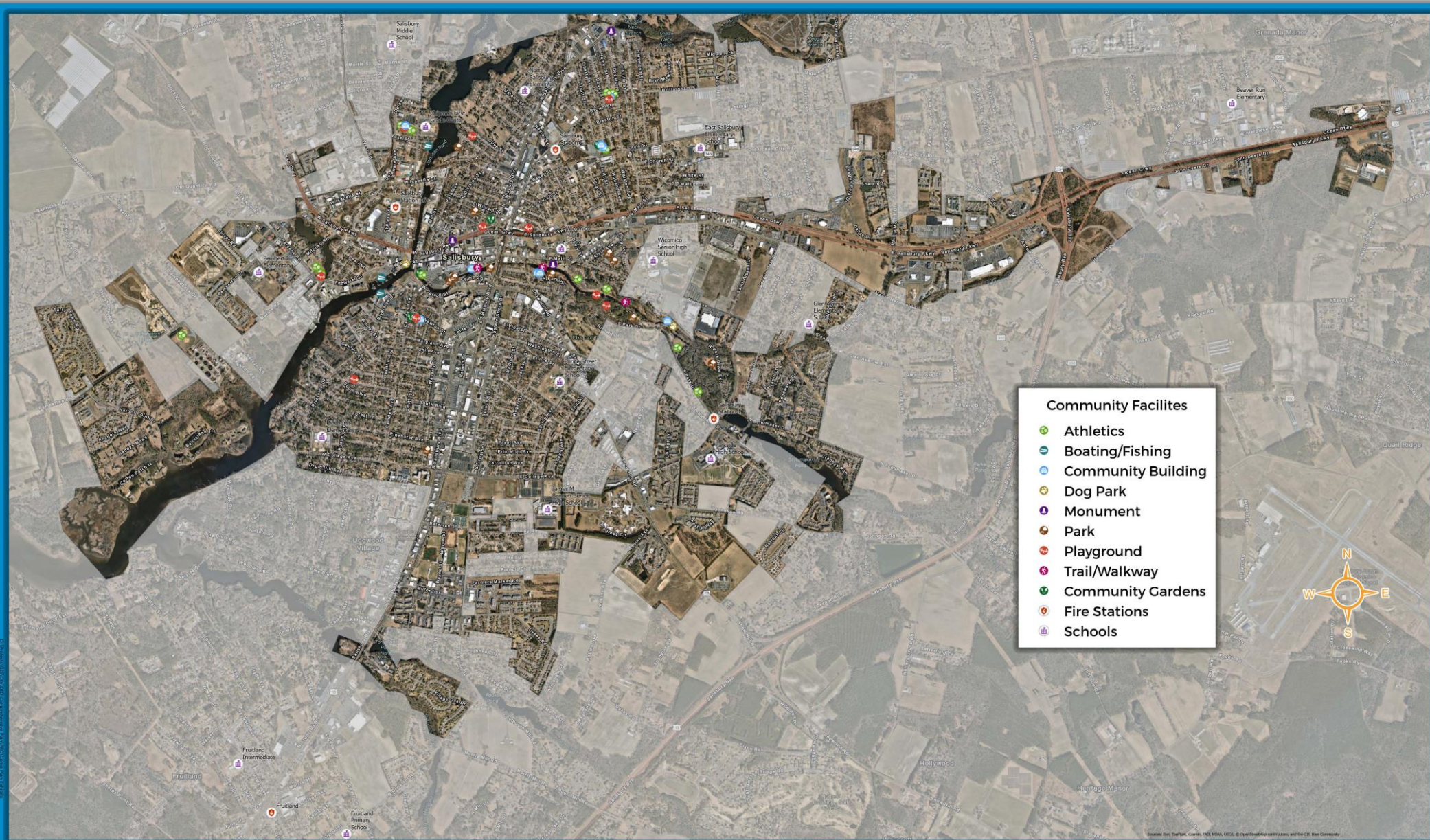
Salisbury, MD

Scale: 1:14,500  
Date: 5/5/2025  
PCS: MD83F





# Community Facilities



## South Salisbury Community Facilities

Salisbury, MD

Scale: 1:14,500  
Date: 5/5/2025  
PCS: MD83F





# Transportation

Transportation facilities may include all types of:

- Airways
- Highways or streets
- Railways
- Waterways
- Routes for mass transit
- Terminals





# Transportation

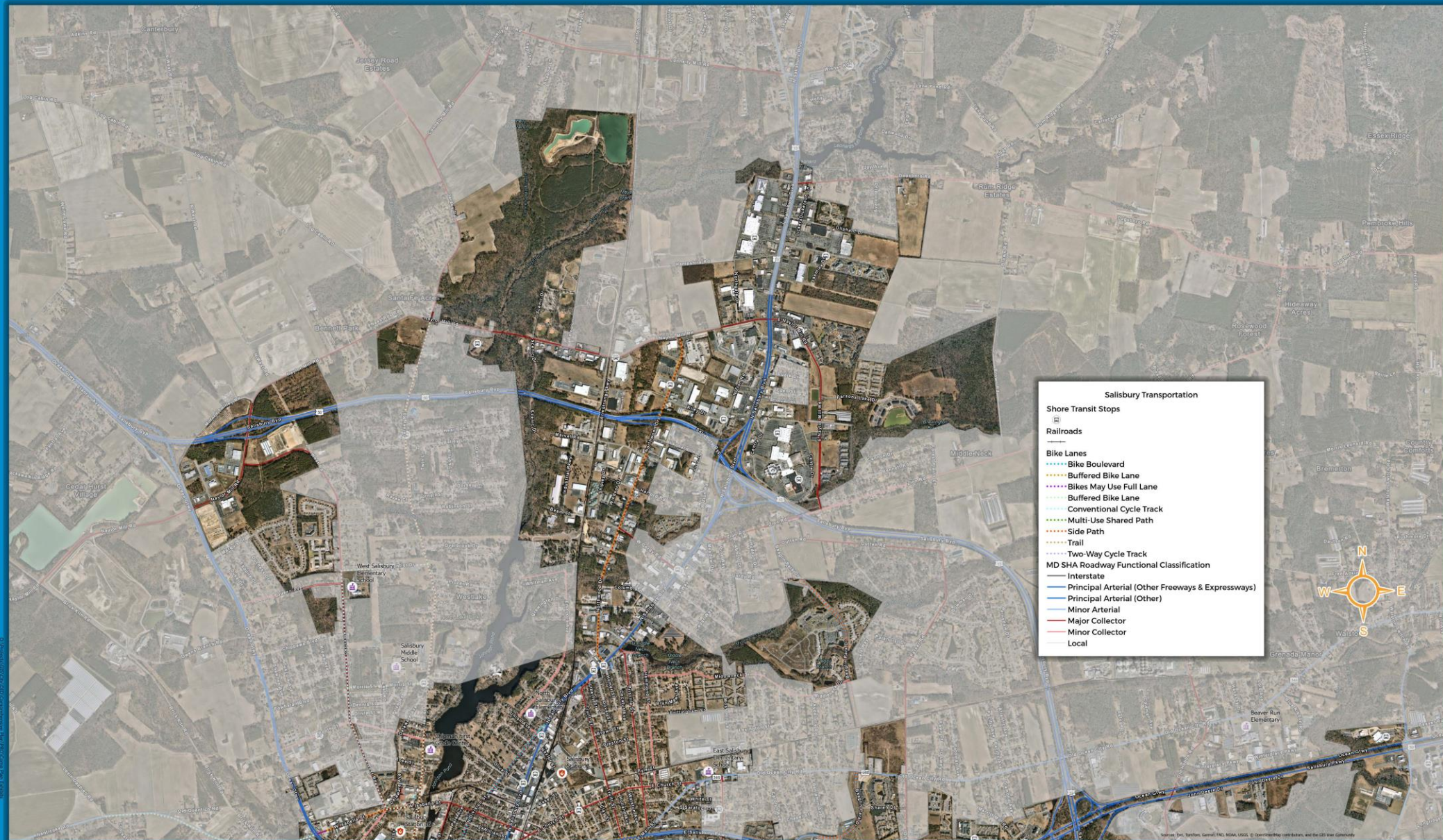
Propose the most appropriate and desirable patterns for:

- The general location, character and extent of channels, routes, and terminals for transportation facilities
- Circulation of individuals and goods
  - Provide bicycle and pedestrian access and travelways
  - Include an estimate of the use of any proposed improvement





# Transportation



## North Salisbury Transportation

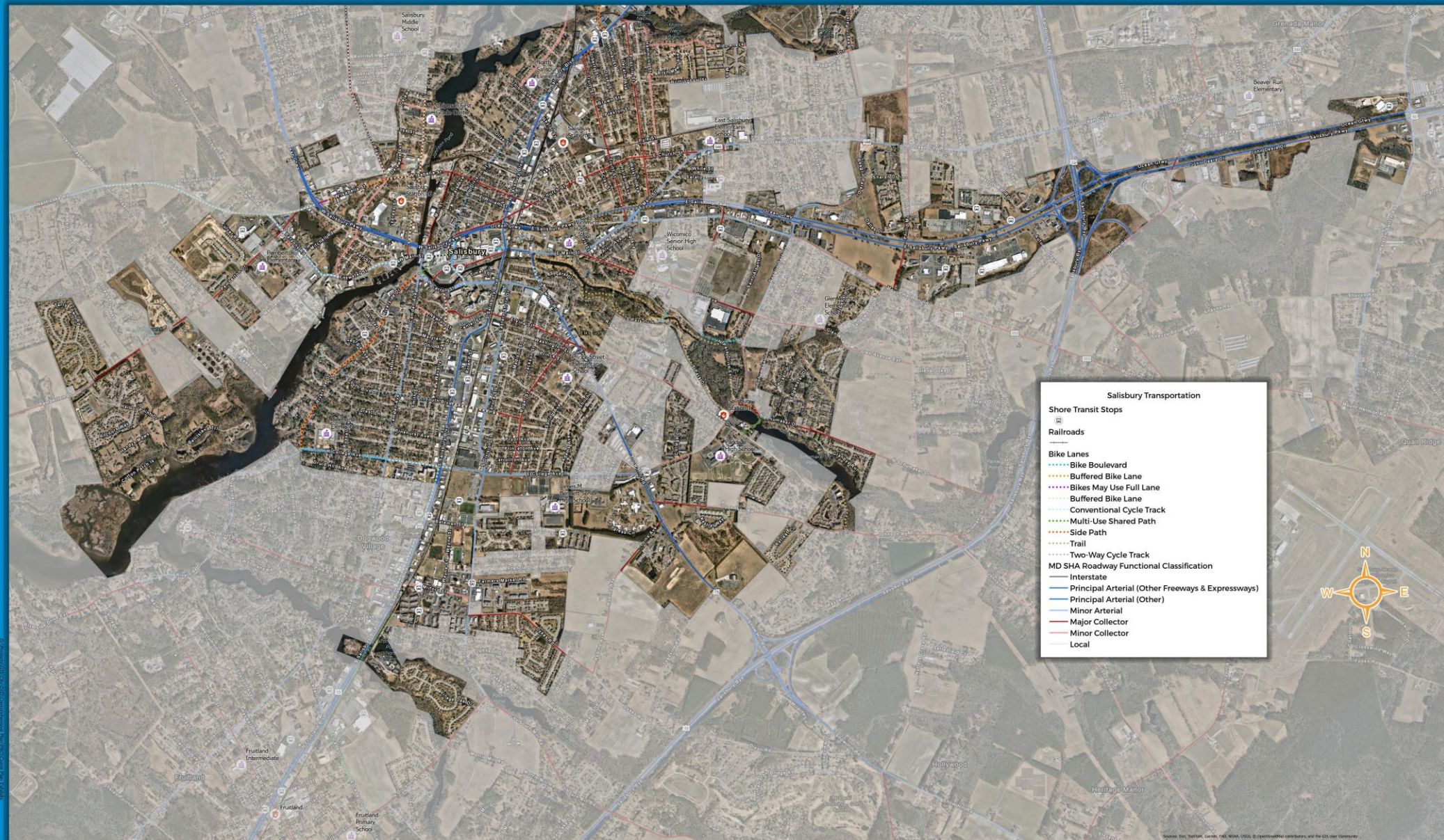
Salisbury, MD

Scale: 1:14,500  
Date: 5/5/2025  
PCS: MD83F





# Transportation



## South Salisbury Transportation

Salisbury, MD

Scale: 1:14,500  
Date: 5/5/2025  
PCS: MD83F





# Discussion Questions

1. What do you feel like the City is doing well with regards to providing community facilities? What types of community facilities are we lacking?
2. Use the dots to locate on the map where you would like to see community facilities and what type. Feel free to write or draw to add explanation or add a facilities that doesn't fall in the categories provided.  
**Red - Fire/Police, Yellow/Orange - Community Centers, Green - Parks/Active Open Space, Blue – Libraries/Educational Facilities)**
3. Generally, what would you consider to be the significant transportation issues in the City?
4. What might some solutions be to the issues identified in the previous questions? If it includes specific infrastructure (additional lights, travel lanes, trails, etc.), please identify on the map where you think that infrastructure should be located.





# Thank you for Participating!

## Next Focus Group Dates and Topics:

- Tuesday, May 20, 2024 – Housing and Historic and Cultural Resources
- Thursday, June 12, 2025 – Water Resources, Environmental Resources and Sustainability

