



Land Use, Municipal Growth, and Economic Development

Comprehensive Plan Update
Focus Group
April 29, 2025



April 29th, 2025

**Comprehensive Plan Update
Focus Group:
Land Use & Future Growth Area
and Economic Development**

Agenda

- Introduction by DID Staff
 - Slide Presentation
- Focus Group Table Discussions
- Share Your Map and Discuss Highlights with the Group

Thank you for your time and input.
If you have any questions please reach out to our
Planning Staff:

Betsy Jackson | bjackson@salisbury.md
Jennifer Jean | jjean@salisbury.md
Zach White | zwhite@salisbury.md
Jessica Crenshaw | jcrenshaw@salisbury.md





City of
Salisbury

Roadmap to Comprehensive Plan

November 2023

Planning Commission
Presentation

**January
2024**

Community
Open
House

**November
2024**

Survey Results
Provided to
DID

**April -
June 2025**

Public
Focus
Groups

February - April 2025

- Public Input and Draft review
- Weekly DID Staff Works Sessions

Summer 2025

- Redraft Plan
- Planning Commission Public Review & Work-sessions

Fall 2025

- Outside Agency Reviews
- Final Edits

Winter 2025/2026

- Planning Commission Public Hearing
- Council Work Sessions & Council Public Hearings

**Comprehensive
Plan Adoption**

YOU ARE HERE

<https://salisbury.md/2024-comprehensive-plan-update>



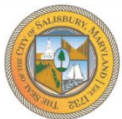
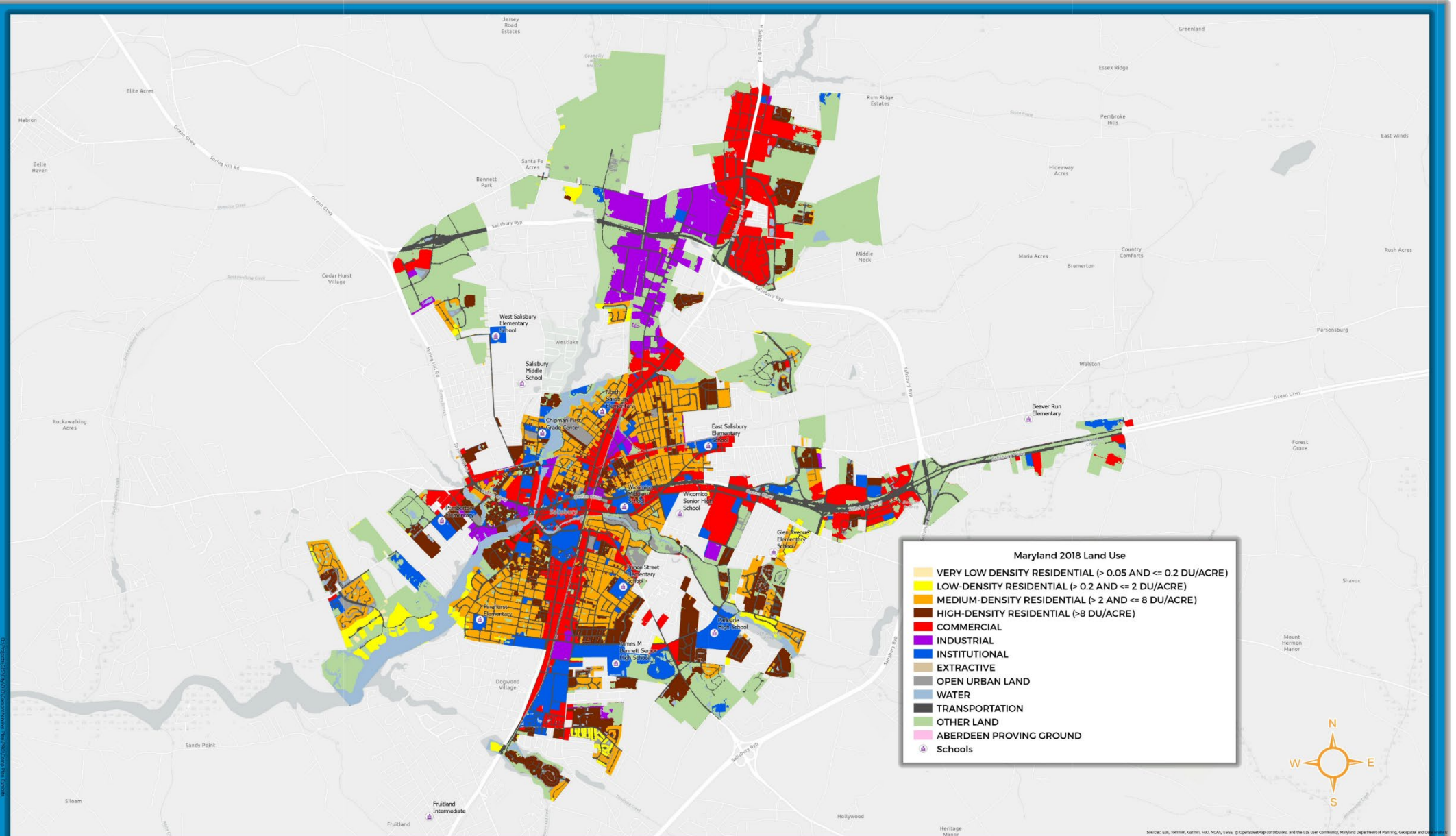
Land Use Element

Propose the most appropriate and desirable patterns for the general location, character, extent, and interrelationship of the uses of public and private land.

Uses may include:

- agricultural,
- commercial,
- forestry,
- industrial,
- recreational and
- residential.





Maryland 2018 Land Use

Salisbury, MD

Scale: 1:24,000
Date: 4/28/2025
PCS: MD83F

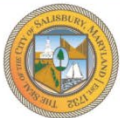
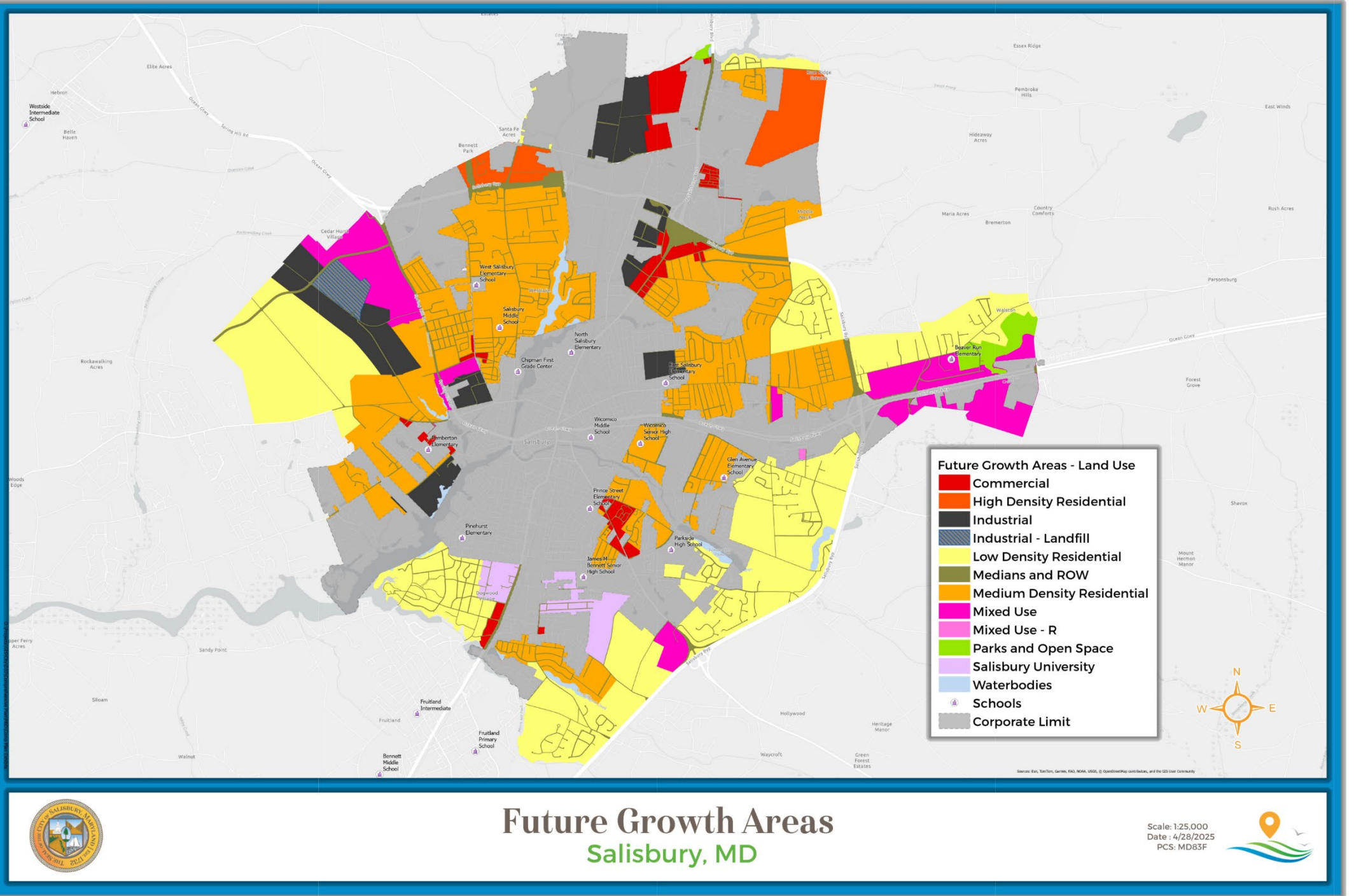


Municipal Growth Element

- This element is primarily a capacity analysis of the City and the future growth areas.
- Using that capacity we can plan for the public facilities and infrastructure needed to support development and population growth.
- We can also consider whether more capacity is necessary to accommodate projected population growth and what ways to get that capacity are the best for the City.



Future Growth



Future Growth Areas Salisbury, MD

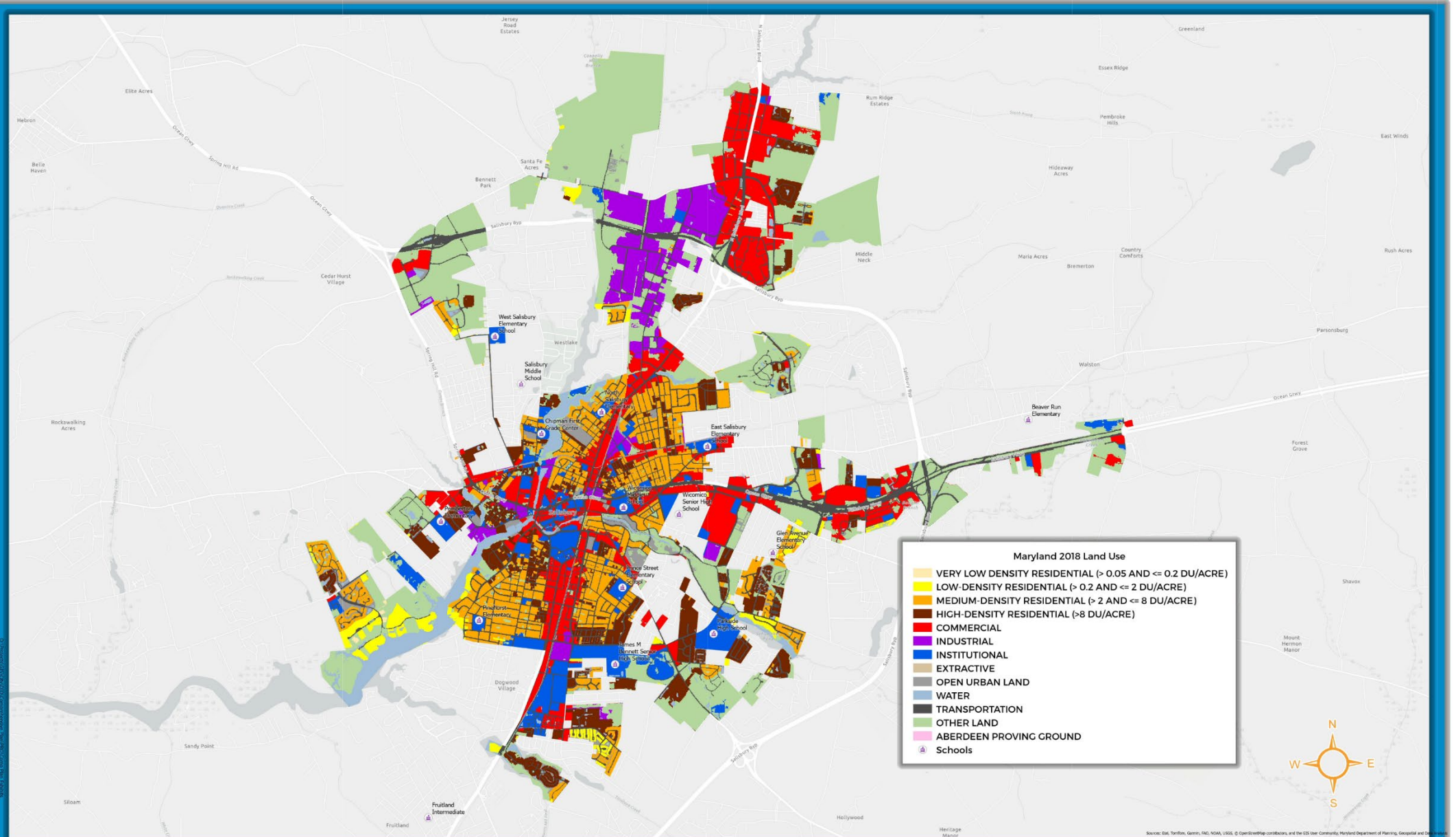
Scale: 1:25,000
Date: 4/28/2025
PCS: MD83F



Economic Development Chapter

- Not a required element by the State but critical when considering land use and the needs of the public
- Maryland Department of Planning replaced the 12 “visions” with 8 “planning principles”. Economic development is part of both the visions and the principles and must be addressed in the Comprehensive Plan.





Maryland 2018 Land Use

Salisbury, MD

Scale: 1:24,000
Date: 4/28/2025
PCS: MD83F



Discussion Questions

1. Looking at the Current Land Use Map, where in the City do you see uses changing? Are any areas inappropriate?
2. What types of businesses do you think the City needs?
3. How do you think we can better attract and support business?
4. Where do you want to see Industrial, Commercial, Residential, and/or Mixed Use? Show on Land Use Map using stickers.
5. Looking at the current growth area map, are there any areas we should consider adding or removing?



Thank you for Participating!

Next Focus Group Dates and Topics:

- Tuesday, May 6, 2024 – Transportation and Community Facilities
- Tuesday, May 20, 2024 – Housing and Historic and Cultural Resources
- Thursday, June 12, 2025 – Water Resources, Environmental Resources and Sustainability

