



Hiking and Biking Trails: How you can get involved

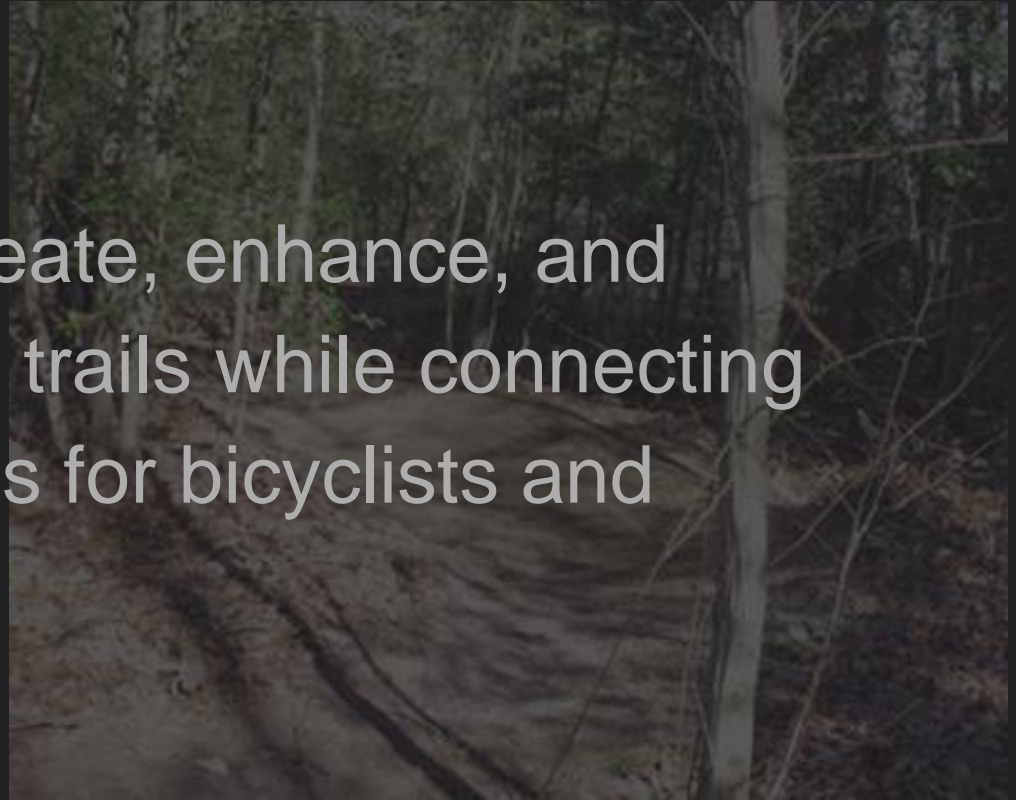
ESIMBA

Eastern
Shore chapter of the
International
Mountain
Bicycling
Association



ESIMBA Mission Statement:

We are charged to create, enhance, and preserve natural local trails while connecting DelMarVa destinations for bicyclists and pedestrians.



ESIMBA Leadership

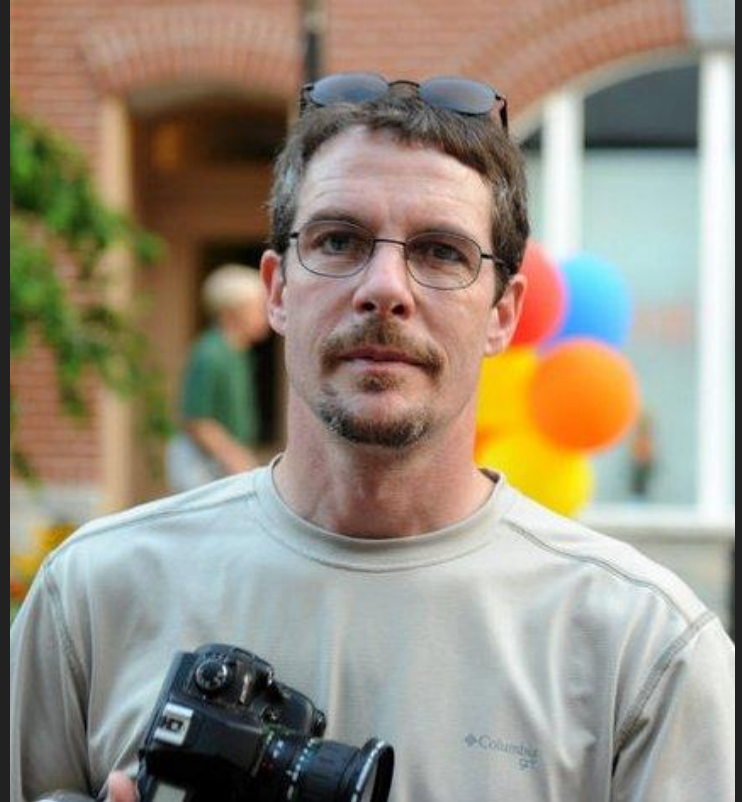
Tres Denk
President



ESIMBA Leadership

Mike Perry

Vice President



ESIMBA Leadership

Martha Denk
Secretary



ESIMBA Leadership

Jerry Denk
Treasurer



History



2009-Searching for places to ride with kids

History



Pocomoke YMCA partnered for trail-building

History



IMBA was tabling at Fair Hill Jamboree

IMBA offered non-profit status

History

Building trails

Monthly bike rides



History



Brought in Salisbury people

Reopened legacy trails at city park.

History

Challenge to Naylor Mill Park solidified community support and brought in other stakeholders such as runners and hikers.



Goals: Promoting Bicycle Safety



- Proper helmet fitting
- ICP Certification



Goals: Spreading bicycle education



- Trail Building classes

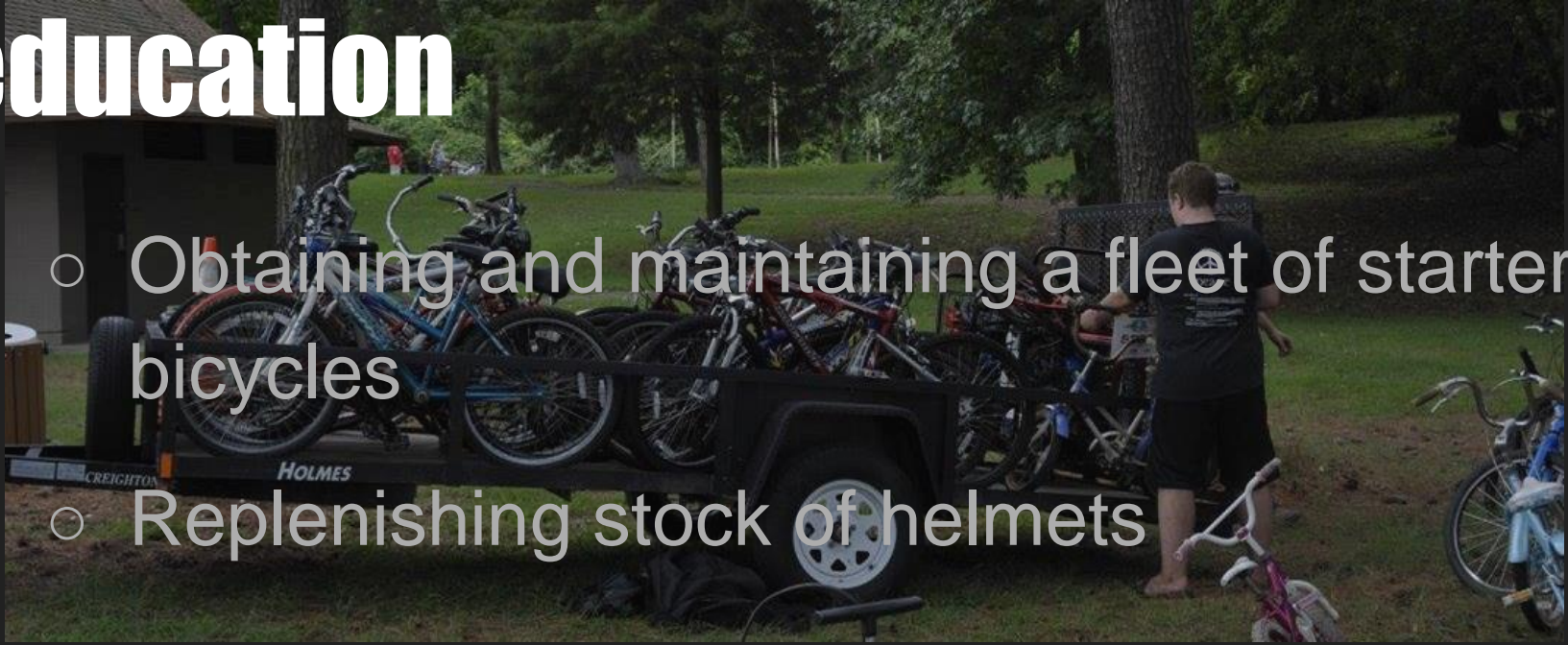
Goals: Spreading bicycle education



- Berlin Intermediate School program

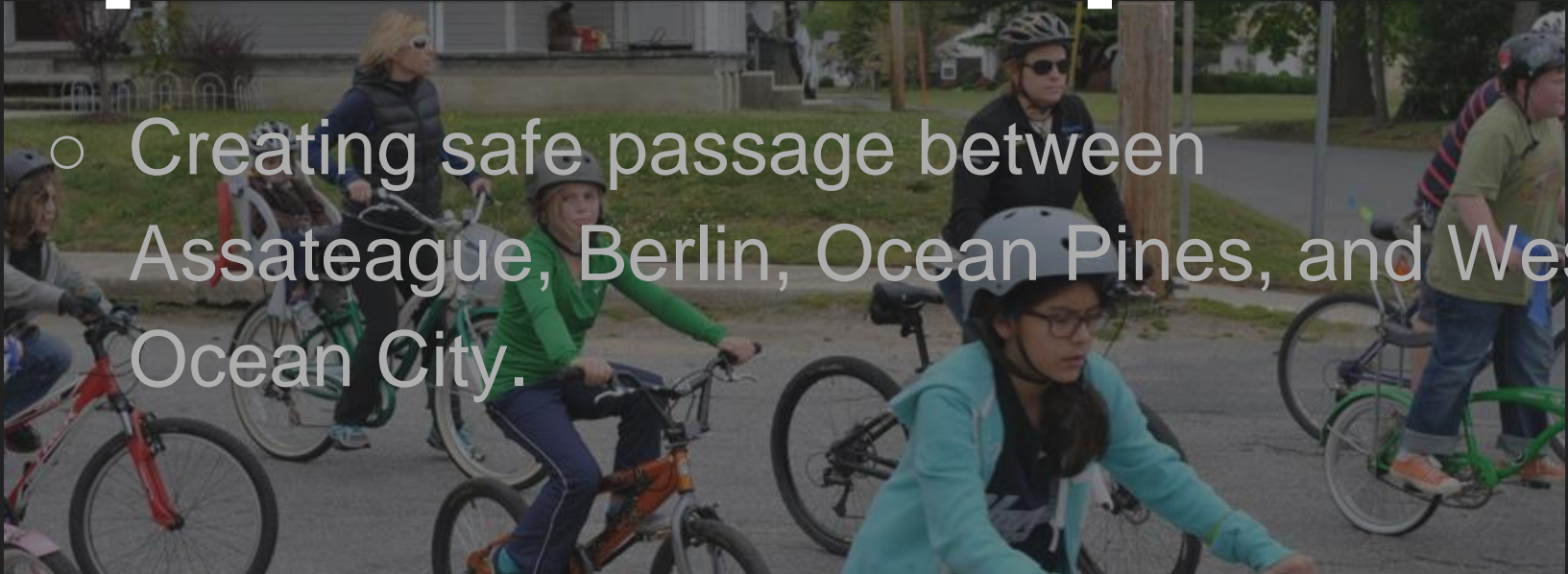
Goals: Spreading bicycle education

- Obtaining and maintaining a fleet of starter bicycles
- Replenishing stock of helmets



Goals: Bringing the empowerment of transportation

- Creating safe passage between Assateague, Berlin, Ocean Pines, and West Ocean City.

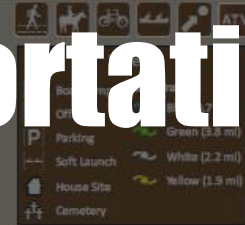


Goals: Bringing the empowerment of transportation

- Enhanced bicycle trail system at Pocomoke State Forest that supports Shad Landing Campground.



Hudson-Tarr Mtn.
Bike Trail &
Mattaponi Soft Launch
Pocomoke State Forest
Worcester County, MD



Goals: Bringing the empowerment of transportation

- New kiosks, maps, directions, and educational signage at YMCA Pocomoke, Salisbury City Park, and Naylor Mill trails.



Goals: Bringing the empowerment of transportation



- Expanding further into Delaware and Virginia through membership recruitment and partnership with existing organizations.

Activities

MAY THE 4TH BE WITH US!!!

JOIN US TO HELP BUILD A BETTER BICYCLING COMMUNITY IN OUR AREA

7PM MAY 4TH @ OC HOUSE OF TRADER LEE'S

7-9 RAISE AWARENESS AND FUNDRAISERS / FAMILY FRIENDLY
9-12 LIVE MUSIC / NOT AS FAMILY FRIENDLY
FLY TRAP & CHAINSAW

COME FIND OUT MORE ABOUT BICYCLING IN YOUR AREA
BERLIN SKATE BIKE UNITE / WEST OC PEDAL PEDESTRIAN
ASSATEAGUE GATEWAY TRAIL, LOWER SHORE LAKE
BIKE SBY / ESIMBA - NATURAL SURFACE TRAIL
MORNING GLASS ENTERTAINMENT MANSION

INTERNATIONAL MOUNTAIN BICYCLING ASSOCIATION EASTERN SHORE

Holiday Fundraiser!!!

Music by: Full Circle Space, Bag & Special Guests FLYTRAP
7:00 Meeting 8:00 Bands

With guest bartenders: Jack Shack & Bettina Lerner Peix
Burley Oak Brewery
December 2, 2013 7pm to 11pm

Door Prizes
50/50 raffle
Bike Raffle
Food

ESIMBA
ESIMBA - EASTERN SHORE INTERNATIONAL MOUNTAIN BICYCLING ASSOCIATION

EASTERN SHORE IMBA

INTERNATIONAL MOUNTAIN BICYCLING ASSOCIATION

General Assembly

Art Stroll Berlin

Fun Race Celebrating My Birthday

Take a Kid Bike Riding

Assembly

Berlin Coffee House

celebration

Berlin Berlin Coffee House

ding School and Conference

Lower Shore YMCA

Mark your calendars as IMBA has given us a \$5000 grant to host a Subaru IMBA Trail Building School and Conference

100C Hazel Outdoor Discovery Center, Eden MD 6pm-9pm This is for our membership concerning organizational marketing projects. All members should plan to attend.

100C Hazel Outdoor Discovery Center, Eden MD 9am-12pm Better Living Through Trails presentation, Key topics: personal health, and wellness benefits that trails bring to the community.

Trail Building School, Lower Shore YMCA, Chaptainville will be from 10am-12pm, Trail Building in the field from 1pm-4pm. Lunch will be served.

Kids Bike Jamboree, Take a Kid Bike Riding Day, Sunday 12pm-3pm. Please, please, please help us bring in many children as possible to the YMCA. We want a photo with hundreds of kids on bikes to show IMBA that we have a lot of kids.

2012 Berlin's Inaugural Trail Day.
10am - 12 pm Starting at the Berlin Intermediate School

RS ●●●

BURLEY OAK BREWERY

• BETHANY BIKE SHOP • WEST 54 CAFE • A BAGEL AND...
• OFFICE SHOP • CONTINENTAL CYCLES • PEDAL WORKS CYCLERY • SUPER FUN ECO TOURS • PEPPERS TAVERN
• BERLIN BICYCLE SHOP • LOADED GUN CUSTOM CYCLES, CAFE & CARS • SALISBURY CYCLE • FULLCITY MEDIA

info@esimba.org

Your Invitation to

THE BRAIN BUCKET BIRTHDAY BASH

THE GRACE RESTAURANT 12 BRIDLE LANE, BERLIN MD 20841

NOVEMBER 5:00 - 8:00 PM

EASTERN SHORE IMBA IS TURNING 4

ICE CREAM

HELP US CELEBRATE ESIMBA

Join us for an evening of family fun. Bring a basket to decorate, or buy one from us at the door. We will supply all the decorations with our own touch.

INFO@ESIMBA.ORG FOR MORE

Bike and Walking Trail Clean-up

2015 MLK Day of Service

When: Martin Luther King Jr. Day, 19 January 2015 9:30 AM - 12:30 PM


Salisbury, MD

com

ESIMBA



Activities



Memoranda of understanding
Created 50 miles of trails in eight locations

Newtown Park built in conjunction with Worcester
County

Activities

- Algonquest
- BIS After School Program

ALGONQUEST

March 23-25th 2018 ~ Milburn Landing Pocomoke, Maryland



Enjoy the Algonquin Trail **Fat Tire Bicycle Fest**

Friday and Saturday

Friday Night Ride 7am-9pm

Saturday Cross Country Race 9am-2pm

New Geo Caches

Wheel House Demo Bikes. Fat Bike
Demos by Beach 2 Bay Bicycling

Food and beverage during scheduled event

BMX & Skateboarding Area Friday and
Saturday by Get Ramped

\$20 single day

\$50 3 day pass

Sunday 9am-12pm

Beach & Boardwalk Bike Ride

Kick off ride, Worcester County Bicycle
Safety Coalition

\$10 donation per rider

Groups over 3 \$5 each



ESIMBA is a 501c3 non profit.
A portion of proceeds will promote bike safety

REGISTER ONLINE ALGONQUEST.com

Activities

- Get Outdoors Day
- Take a kid mountain biking day



Activities



- Bikes on beach
- Jellyfish festival
- Maryland Coastal Bays Bay Day



Fundraising

The background of the slide is a dark, semi-transparent overlay on a photograph. The photograph shows a close-up of a bicycle's rear wheel and chain, with the chain and gears in sharp focus. The background of the photo is a wall covered in colorful graffiti, including various tags and symbols like 'BMX' and '4/16'.

- Operating expenses approximately \$5000 per year
- IMBA chapter expenses
- Insurance, IMBA fees, Storage Unit, Trailer
- Advertising, Stickers, T shirts

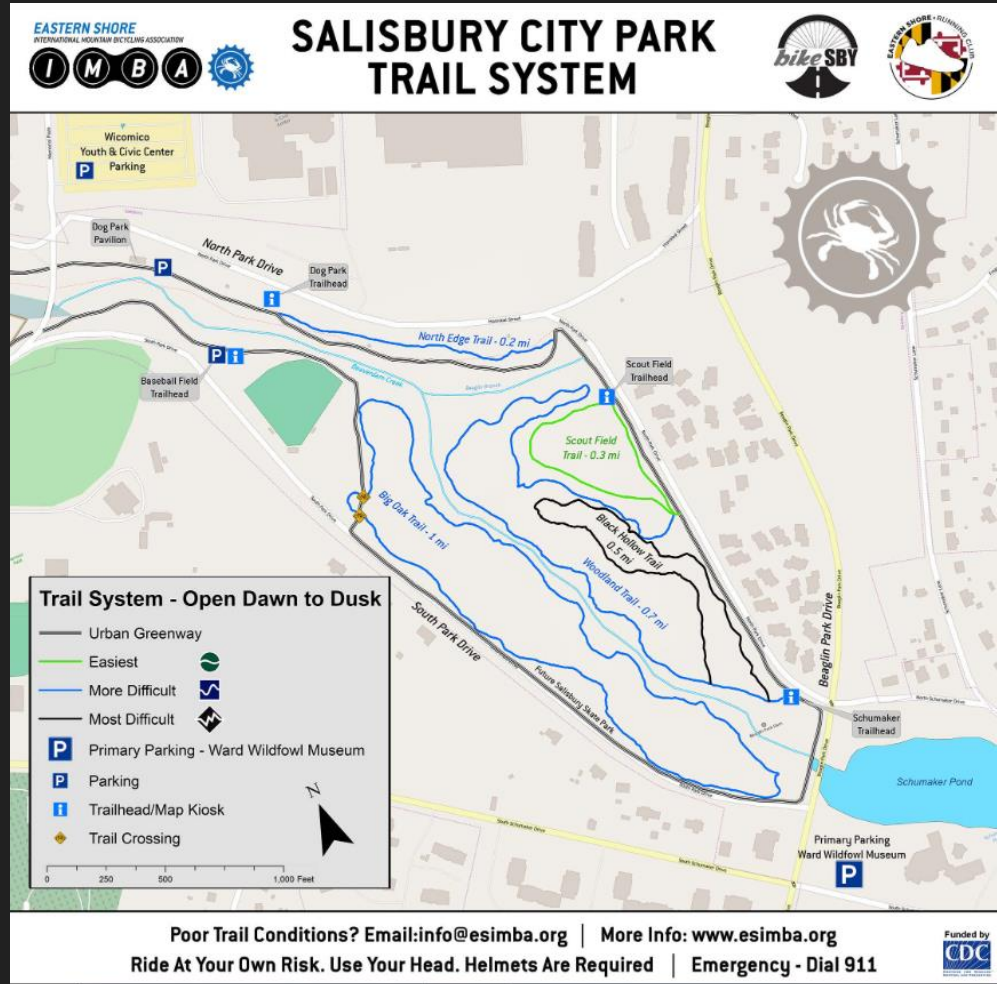
Fundraising

A man with glasses and a beard is performing on stage. He is wearing a grey long-sleeved shirt over a black t-shirt with 'NIRVANA' in yellow letters. He is playing a light-colored acoustic guitar and singing into a microphone. To his left, a black t-shirt with a 'Live Music' logo and 'tomlimbsment.com' is visible. A music stand with sheet music is in front of him. The background is dark with some stage lights.

- Membership
- Donations and Sponsorships
- Grants
- Events

Outreach

- Maps
- Tabling at local events
- Flyers



Outreach

The Wheelhouse
Bike donation hub



Needs from community:

- Photography/videography
- Artists to decorate helmets
- Trailworkers
- Wheelhouse volunteers



Needs from community:

- Make flyers for events
- Help with fitting helmets
- Table at events
- Help with waivers at events



Needs from community:

- Parade participants
- Street teams to advertise
- First aid
- Civic Duties
- Service learning hours



Legacy

Leave a trail for others to follow.

See a need and move to act.

Inspire others to act.

EASTERN SHORE



INTERNATIONAL MOUNTAIN BICYCLING ASSOCIATION

Get involved!

Join ESIMBA!

<http://esimba.org/>

