

City of Salisbury Grant Workshop

JULY 17TH, 2019

A PARTNERSHIP BETWEEN THE
CITY OF SALISBURY AND CHESAPEAKE BAY TRUST

AGENDA

5 pm – Introductions and Please Sign In!

5 pm to 5:45 pm – Presentation by Sadie Drescher and Sarah Koser (Chesapeake Bay Trust)

Welcome (Amanda Pollack, City of Salisbury)

History of Partnership/Goals

Outreach and Restoration Grant Program

Getting Started

Post-Award Steps

Example Project Ideas

Resources

Other Chesapeake Bay Trust Grant Programs

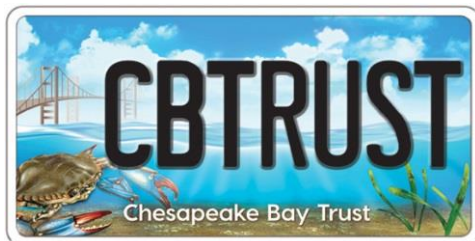
Who to Contact

Question/Answer

6 pm to 7 pm - “office hours” with the Chesapeake Bay Trust to discuss potential projects

Start your application today at <https://cbtrust.org/grants/outreach-and-restoration/>





You want to protect the Chesapeake.

We provide the resources.

The Chesapeake Bay Trust awards more than \$10 million in grant funding each year to hundreds of nonprofits and community organizations throughout the region for hands-on projects that are ensuring a cleaner, greener, healthier Chesapeake watershed for years to come.

How the Trust is Funded

Sources of Funds for Trust Grants and Projects



Chesapeake Bay Vehicle License Plates

Hundreds of thousands of drivers show their Bay pride by owning Bay Plates. The plates cost \$20 and can be purchased online at bayplate.org, through car dealerships, at tag and title outlets, or in person at the Maryland Motor Vehicle Administration.

Individual Donations

Donations can be made online at cbtrust.org/donate or via U.S. mail.

Donation Line on State Income Tax Form

The Chesapeake Bay and Endangered Species Fund on the Maryland state income tax form allows Marylanders to make a tax deductible donation that helps the local environment and protects native wildlife.

Donations with Fishing, Boating, and Hunting Licenses and Registrations

New in 2018, individuals purchasing sportsmen's licenses and boating registration through the Maryland Department of Natural Resources can make a donation online. Learn more at cbtrust.org/mdoutdoors.

Foundation Partnerships

Numerous foundation partners offer their funding and expertise through jointly funded initiatives managed by the Trust to raise awareness and further our shared mission of enhancing Bay stewardship throughout the watershed, including:

- Agua Fund, Inc.
- Chesapeake Bay Funders Network
- Exelon Corporation, Constellation Energy, and BGE
- Hillsdale Fund
- MARPAT Foundation
- Nabit Foundation/Great Chesapeake Bay Swim
- National Fish and Wildlife Foundation
- Prince Charitable Trusts
- Rauch Foundation
- The Keith Campbell Foundation for the Environment
- The Morris & Gwendolyn Cafritz Foundation
- Town Creek Foundation

Federal, State and Local Partners

The Trust collaborates with many federal, state, and local agencies on grant programs and specific initiatives to support restoration and outreach programs throughout the watershed, including:

- National Oceanic and Atmospheric Administration
- National Park Service
- U.S. Environmental Protection Agency Chesapeake Bay Program
- U.S. Environmental Protection Agency Region III Water Protection Division
- U.S. Fish and Wildlife Service
- Maryland Department of Natural Resources
- Maryland Department of the Environment
- Maryland State Highway Administration
- Anne Arundel County Forestry Board
- Anne Arundel County Government
- Baltimore City Government
- Charles County Government
- Harford County Government
- Howard County Government
- Montgomery County Government
- Prince George's County Government
- City of Gaithersburg

TALBOT

Ecotone, \$500,000 for a 13-acre nontidal forested wetland restoration project

Environmental Concern, \$1,250 for pollinator workshops and two native meadow gardens

Environmental Concern, \$1,250 for two native pollinator gardens

Future Harvest—Chesapeake Alliance for Sustainable Agriculture, \$11,666 to expand communications and outreach activities

Pickering Creek Audubon Center, \$29,146 to teach local homeowners with Habitat for Humanity Choptank how to plant Bay-friendly yards

Pickering Creek Audubon Center, \$4,993 for environmental education professional development for 20 mid-shore teachers

ShoreRivers, \$39,864 for an Atlantic sturgeon education program for all 3rd graders in the County

ShoreRivers, \$14,917 for strategic planning

ShoreRivers, \$1,250 for an oyster aquaculture and planting project for Queen Anne's, Dorchester, and Talbot County high schools

Town of Easton, \$8,058 for planting 49 street trees

University of Maryland—Talbot County Extension, \$999 for a native pollinator planting, interpretive signage, and education program on Poplar Island

YMCA of the Chesapeake, \$4,000 for a trash trawl boat trip and plastic litter reduction campaign for 16 students

WASHINGTON

Hagerstown Community College, \$4,992 for a workshop on Western Maryland water quality issues for 20 high school teachers

Town of Williamsport, \$4,917 for a community stream clean up and planting event

Washington County Public Schools, \$40,000 for environmental education curricula for all county 4th, 8th, and 10th graders

WICOMICO

Comite de Apoyo a los Trabajadores Agrícolas—CATA, \$11,667 for capacity building support for technology

James M. Bennett High School, \$1,963 for a Wicomico River biodiversity field trip and schoolyard biodiversity survey for 125 11th graders

Socially Responsible Agricultural Project, \$11,667 for capacity building to enhance its role in a new Lower Shore collaborative

The Nature Conservancy, \$1,055 to plant 1,000 native trees on Plum Creek Preserve

Waterkeepers Chesapeake, \$11,667 for capacity building support for technology and development

WORCESTER

Assateague Coastal Trust, \$61,667 to create a resource center for engaging Lower Eastern Shore citizens

GreenVest, \$840,000 to design, implement, maintain, and monitor the Birch Branch Wetland Restoration project

History of Partnership



An agreement between City of Salisbury and the Chesapeake Bay Trust in 2019 was created.



This agreement supports the City's goal of "improving water quality and to make progress on environmental restoration efforts for compliance with the U.S. Environmental Protection Agency (EPA) and Maryland Department of the Environment (MDE) requirements for meeting water quality goals"



We anticipate that the City of Salisbury will continue to partner with the Chesapeake Bay Trust through the Outreach and Restoration program



Funding is from the City of Salisbury (Department of Infrastructure and Development) and The Bay Plate sales



Outreach and Restoration Grant Program



Goals:

- Implement community-led stewardship efforts
- Complete on-the-ground restoration projects



Goals:

- Enhance public awareness about benefits of restoration through installation of best management practices (BMPs)



Goals:

- Fund projects that both improve communities and improve local natural resources like green spaces, parks, tree canopy, water bodies, and more within the City.



Funding amount: up to \$50,000



Application Deadline: August 22nd at 4pm

Who Is Eligible?

- 501(c)3 Private Nonprofit Organizations
- Service, Youth, and Civic Groups
- Faith-based Organizations



- Forestry Boards
- Municipal, County, Regional, State, Federal Public Agencies
- Community and Homeowners Associations (HOAs)
- Public and Independent Higher Educational Institutions (Schools and Colleges)

Track 1: Outreach Projects

Increase public knowledge and engagement in the challenges and solutions to restoring Maryland's natural resources: local green spaces from urban to rural, parks, streams, rivers, and bays.

- Awareness Projects, requests up to \$30,000
- Behavior Change Projects, requests up to \$50,000



Track 1: Outreach Projects – City of Salisbury

Suggestions:

- Educating & engaging community residents about natural resources and stormwater improvement practices, such as rain barrels, rain gardens, tree planting, and pervious pavement
- Demonstration projects or knowledge building activities
- Communicating environmental messages that promote water quality improvement efforts
- Pet waste removal campaigns
- Promoting environmentally responsible communities through outreach/engagement effort

Track 2: Restoration Projects

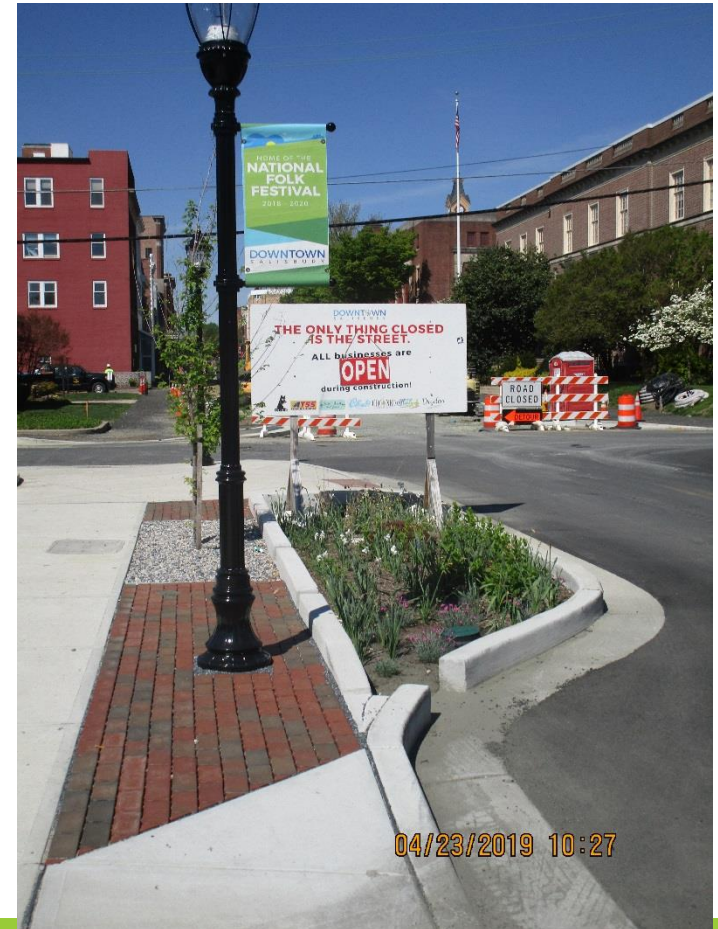
Engage people in on-the-ground community-based projects that benefit both the community and the quality of one or more natural resources

- Up to \$50,000 for implementation-only (construction) requests
- Up to \$5,000 of overall budget can be used for the design of restoration practices:

NOTE: complex projects that require engineer designs may need more design funding than is available (\$5,000) in this program.

Track 2: Restoration Projects, City of Salisbury Suggestions:

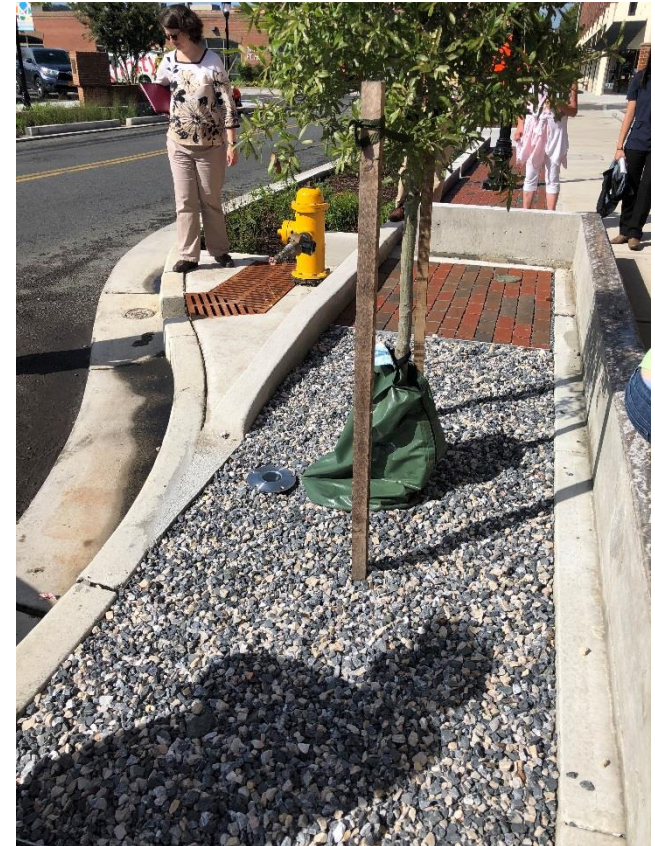
- Bioretention cells, bioswales, and rain gardens
- Low impact development techniques
- Tree canopy expansion



Track 3: Outreach and Restoration Projects

Combine the goals for both tracks in order to achieve increased meaningful and measurable outcomes

- If you have an idea that is not listed in RFP, but meets the goals of the program, contact the Chesapeake Bay Trust staff (Sadie) to discuss before applying
- Requests up to \$75,000 for projects that combine outreach projects with restoration projects

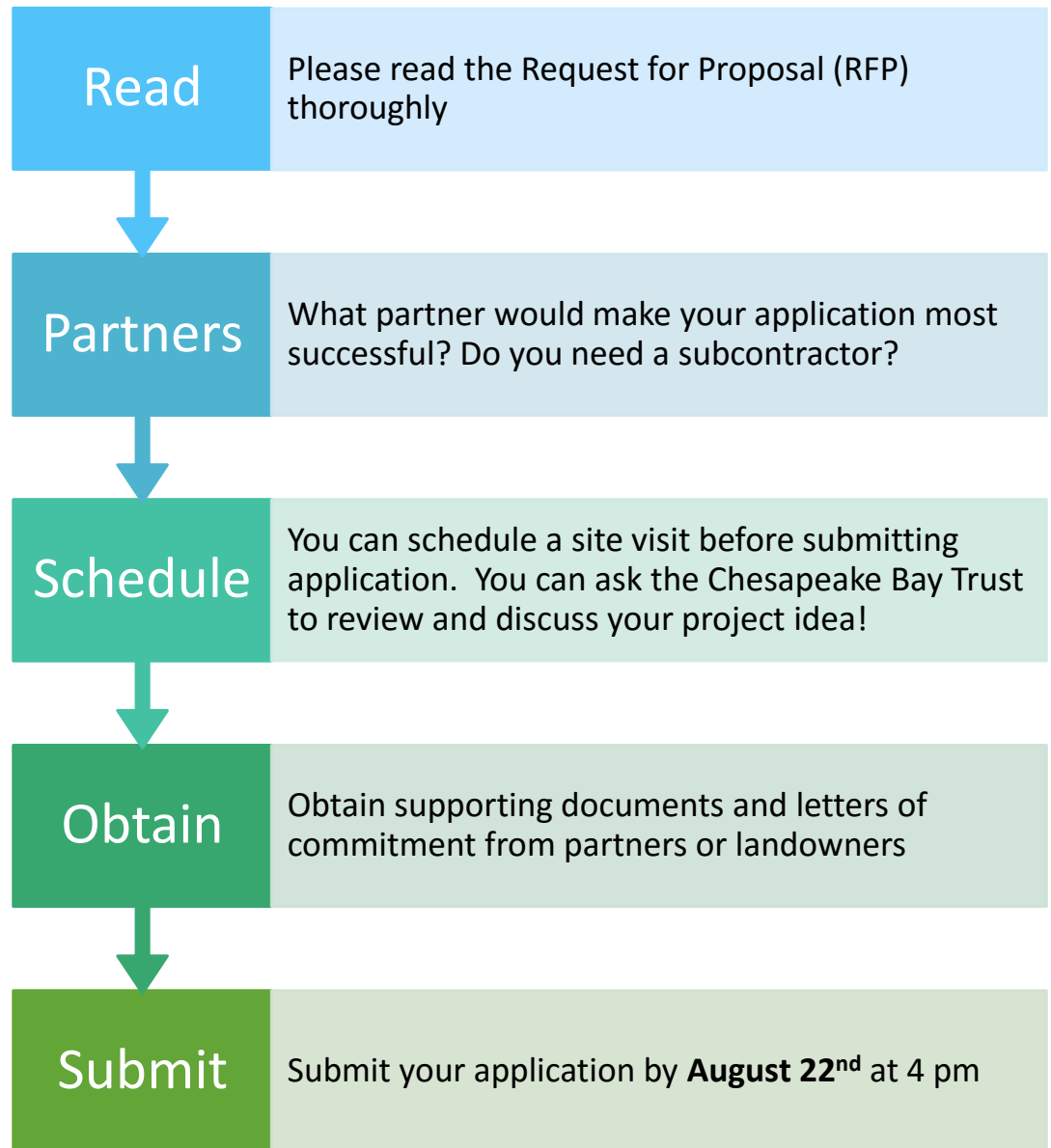


Track 3: Restoration Projects, City of Salisbury Suggestions:

- Bioretention cell/bioswale/rain garden construction combine with educational workshops and seminars
- Tree canopy expansion or tree plantings paired with outreach components
- Habitat restoration and partnering with a nonprofit environmental education organization to engage volunteers from the community to clear invasive species and plant native perennials, shrubs, and trees



Practical Tips for your Grant Application



Where to Find RFP and How to Submit the Online Application

Outreach and Restoration Grant Program

The Chesapeake Bay Trust, in partnership with the City of Baltimore Department of Public Works, Charles County, Harford County, Howard County, the City of Gaithersburg, Queen Anne's County, and the City of Salisbury, is pleased to announce that the Outreach and Restoration Grant Program is now open. This grant program encourages outreach and community engagement activities that increase stewardship ethic of natural resources and on-the-ground restoration activities that demonstrate restoration techniques and engage Maryland citizens in the restoration and protection of the Chesapeake Bay and its rivers. This grant program funds projects in partner areas as well as throughout Maryland.

What this funds: *Application Tracks* – Applicants can request funds from one of the following tracks.

- **Track 1: Outreach:** up to \$30,000 for projects focused on education and awareness as project outcomes, up to \$50,000 for behavior change projects.
- **Track 2: Restoration:** up to \$50,000 for implementation projects
- **Track 3: Outreach and Restoration:** up to \$75,000 for projects that combine restoration and outreach elements to measurably build knowledge within the community served.

Who can apply: Non-profit organizations, community and homeowner associations, faith-based organizations, and more. See RFP for full list of organizations. This grant program funds projects in partner areas as well as throughout Maryland.

Is match required? Match is encouraged but not required.

Grant Application Process: The Chesapeake Bay Trust's grant applications are all submitted through an online system. If you have questions regarding the application process, please contact BreAnna Brooks at 410-974-2941, x112 or Sarah Koser at 410-974-2941, x106.

Program Overview Webinar

Please watch this short webinar (under 22 minutes) to hear more about the program, example project types, and application tips and tricks.

Program Status: OPEN
To view the RFP, [click here.](#) **RFP!**

Deadline: Thursday, August 22, 2019 at 4pm EST.

Start a New Application
Get started with a new application.
[Get Started](#) **Start a New App!**

Manage an Existing Grant Or Application
Manage an existing grant or continue an existing application for an open grant program.
[Manage Grants](#) **Work on Saved App!**

Online Portal to Access Application



[Chesapeake Bay Trust](#) | [Contact Us](#) | [Return to My Account](#) | [Logout](#)

[Applicant Information](#) | [Project Information](#) | [Timeline](#) | [Deliverables](#) | [Volunteers](#) | [Partnerships](#) | [Narrative & Supporting Documents](#) | [Budget](#) | [Terms Conditions](#) | [Demographics](#) | [Review and Submit My Application](#)

[Save & Finish Later](#) | [Next](#)

Applicant Information

[Printer Friendly Version](#) | [E-mail Draft](#)

* Required before final submission

Outreach and Restoration Grant Program Application

Please Sign In

Welcome To The Chesapeake Bay Trust Online System.

If you are a first time user of our system:

- Click the "New Applicants, click here" button.
- Follow the onscreen prompts to create an account.
- Please note: The Trust's grant system works best in Internet Explorer, especially when uploading documents.

If you have an established account on this system:

- Enter your e-mail address
- Enter your Password
- Click "Log in " to continue.

E-mail

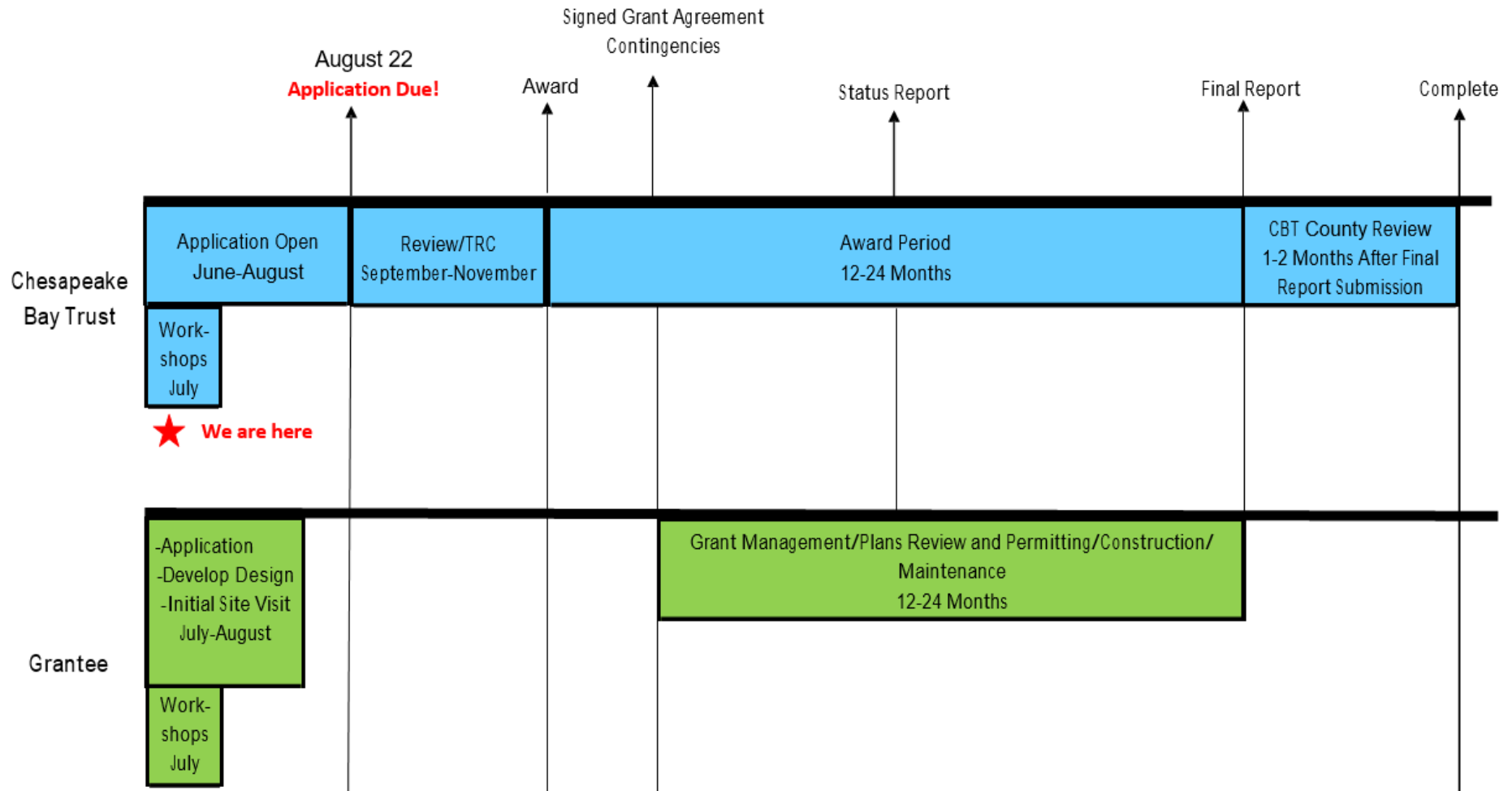
[New Applicants, click here](#)

Password

[Forgot Password?](#)

[Log in](#)

Grant Process Timeline



What to Expect after Submission



Decision Notification:

- Decisions to be made in late November
- Full or Partial Award Letters (mid- to late-December)

Decline Letters
(mid- to late-December)

Debriefs and Feedback
(if requested, early January)



If Awarded:

READ then submit Signed
Award Agreement

Post-award conference call
with the Chesapeake Bay
Trust to review grant
agreement

Post-award site visit if you are
doing a restoration project

Permitting, Plans Review, and
As-builts

Reporting (progress report(s),
status report(s), final report)

Example Project: City of Salisbury

- Stormwater “retrofit”
- City of Salisbury
City of Salisbury Main Street Masterplan – Salisbury, MD
<https://cbtrust.org/grants/green-streets-green-jobs-green-towns/projects/>



GREEN STREETS | GREEN JOBS | GREEN TOWNS INITIATIVE

The Green Streets, Green Jobs, Green Towns Partnership (G3) aims to stimulate the green jobs market and enable families to work where they live and play. Small to mid-sized communities can boost their local economies and protect water resources through the use of watershed planning, design and construction of stormwater best management practices.

City of Salisbury Main Street Masterplan

The Masterplan incorporates stormwater management, erosion and sediment control and green infrastructure elements in an effort to improve the City's ecological footprint. Innovative techniques to reduce runoff and water quality include added vegetation, pervious pavers, improved soils for water quality, and bioretention areas. Additionally, the project will replace all utilities and provide improved pedestrian access and crosswalks, traffic calming, bike friendly roadways, street lights and landscape features.

The City of Salisbury is reconstructing and revitalizing the Main Street of its Downtown, from Route 13 to Mill Street. This project will set the standards by which the City incorporates more pervious surfaces and water quality features in its future streetscapes.

Division Street. They are hereafter referred to as “the project.”

Best Management Practices (BMP's), such as bioretention areas, will be constructed to provide water quality treatment via filtration for the drainage areas along the Main Street right-of-way. The Bioretention Areas will also reduce the amount of water that is piped directly to discharge into the river. The estimated impervious surface area being treated in Bioretention Areas 6 through 15 is approximately 2.14 acres. The total drainage area to Bioretention Areas 6 through 15 is 2.32 acres. The bioretention areas will be incorporated into the streetscape landscape to present aesthetically pleasing features, while providing functional stormwater management.

The City's 2010 Comprehensive Plan included an emphasis on environmental concerns and resulted in the subsequent update of the City's Stormwater Management Ordinance. This project aligns with that emphasis in its effort to construct green infrastructure in the project area. The City plans to incorporate green street elements as a standard practice in City projects that include stormwater management improvements.

The construction project has been divided into three phases: Phase 1 is West Main Street, Phase 2 is East Main Street, and Phase 3 is Division Street. The ten (10) Bioretention Areas are located along East Main Street between Route 13 and North



Green Streets, Green Jobs, Green Towns Initiative // Stories of Green Infrastructure

PROJECT ELEMENTS

- **Impervious pavement removal** – Rain hits impervious surfaces such as parking lots and roads, and because it cannot soak through, it instead runs off into storm drains or directly local waterways. The new Salvation Army Harnsburg site contains 5.5 acres of impervious surfaces that drain directly into the adjacent Spring Creek. The unnecessary area of this parking lot will be removed and planted with native vegetation.
- **Native Trees**– In urban areas a single tree can intercept from 500 to 4,000 gallons per year. Trees not only treat stormwater, they provide a host of other benefits, including energy cost reduction in both summer (shade) and winter (proper placement can result in the reduction of energy use by 20-50%), aesthetics, property value enhancement, business traffic enhancement, and health benefits.

Current site conditions



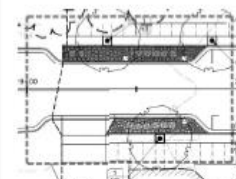
SUSTAINABILITY & GROWTH: ADDITIONAL GREEN ACTIVITIES

The project fits into the City's Comprehensive Plan which calls for ecological enhancements to improve the water quality in the Wicomico watershed. The City is incorporating a variety of urban green infrastructure elements into its projects to improve water quality. The bio-swales will treat runoff from the road surface through curb openings. Landscape features will include street trees and green space outside of the pedestrian walkways. The new trees will increase the street tree canopy and will provide for temperature mitigation and air quality improvement. The street trees will be planted with the growing medium consisting of Silva Cells. Silva Cells have been found to perform similarly to standard bioretention facilities with high rates of nitrate removal. Permeable pavers will be placed in the 4-foot border behind the curb to allow additional water treatment. The Silva cells and the Bioretention Areas will serve to reduce the amount of water that is piped and directly discharged into the Wicomico River.

The City of Salisbury is listed as a Sustainable Community and a participant in the Main Street Maryland Program by the State's Department of Housing and Community Development which promotes smart growth and revitalization. As part of the program, Salisbury is committed to enhancing the perception of the neighborhood through the principles of Smart Growth and sustainability.

For additional information: visit www.epa.gov and www.cbtrust.org.

G3 Grant Awarded: \$75,000
Total Project Cost: \$3,871,236
Status: Awarded



04/23/2019 10:27

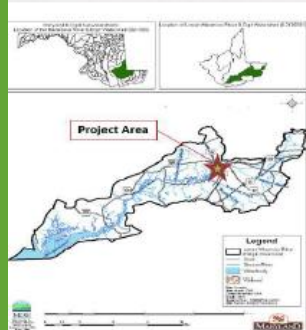


Figure 1: Location Map of the Lower Wicomico River Watershed

Estimated Project Metrics



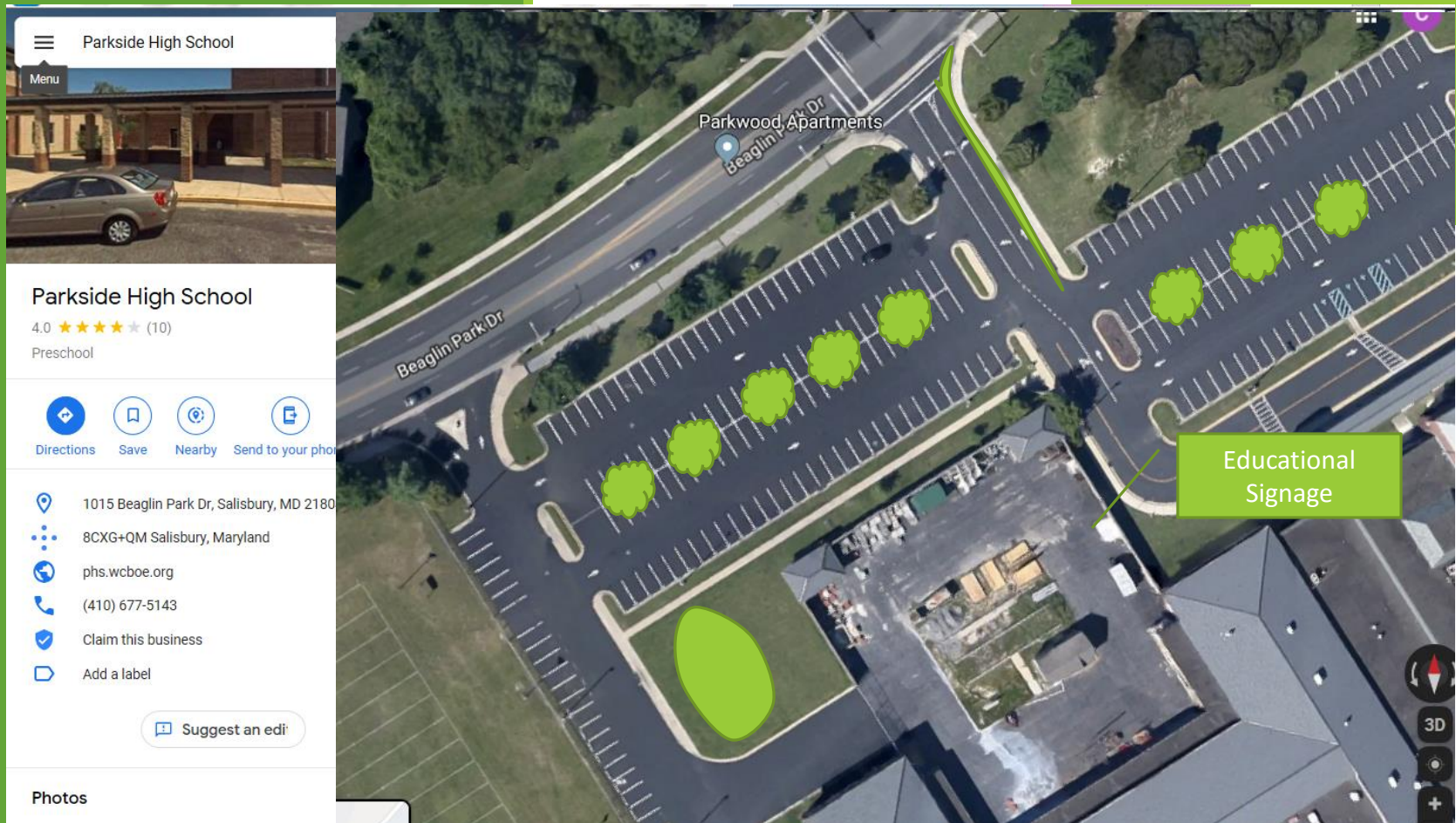
Supports 7 Green Jobs

Partners with multiple community plans



Example Project Idea

- Stormwater practices proposed in watershed plan
- High priority



Stonegate HOA – What practice might go here?



Example Project Idea

- Tree Planting Opportunity

Wicomico River Watershed Management Plan

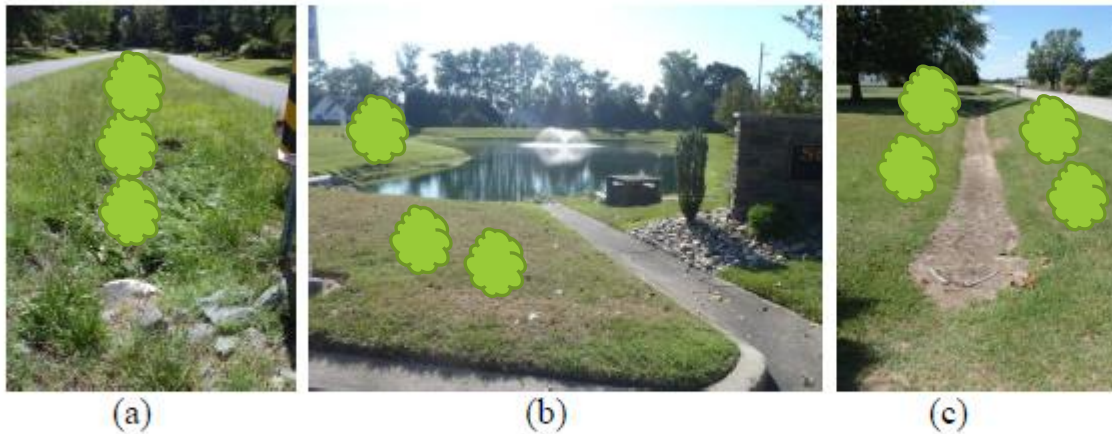


Figure 4. 7. (a) Opportunity for stormwater treatment at SP_NSA_15; (b) Opportunity for tree planting around a stormwater pond at SP_NSA_5; and (c) Opportunity for ditch restoration at SP_NSA_6

Resources

- CBT Website
 - Outreach and Restoration grant opportunity <https://cbtrust.org/grants/outreach-and-restoration/>
 - RFP, Example Projects, Application Portal, Additional Resources page (<https://cbtrust.org/additional-resources/>)
- Local resources:
 - [Wicomico River Watershed Management Plan](#)
 - [Wicomico Phase II WIP](#) (see pages 18-19)
- [Behavior Change Case Study Database](#) is an open collection of outreach campaigns focused on changing behaviors or practices of target audiences that reduce their impact on the local environment
- [Rapid Assessment for Outreach Programs Fostering Environmentally Responsible Behaviors](#) - to assist organizations with assessing whether elements of their environmental behavior change programs are being used to their full potential
- [Water Resources Registry \(WRR\)](#) – An interactive mapping for grantees to build their own site maps for project submission
- Talk with past grantees

Additional Chesapeake Bay Trust Grant Programs



Watershed Assistance Grant Program (OPEN NOW)

Goals:

- Create a **design** of watershed restoration and protection projects or planning and programmatic development projects
- Designs that can be used to apply for implementation
- Partnership between the Chesapeake Bay Trust , Maryland DNR, and Maryland Department of the Environment
- Website: <https://cbtrust.org/grants/watershed-assistance/>

Funding amount: up to \$75,000

Application deadline: August 29, 2019 at 4pm

Contact: Emily Stransky, EStransky@cbtrust.org

Green Streets, Green Jobs, Green Towns Grant Program (open in fall)

Goals:

- Supports design projects, financing strategies, and/or implementation of green street projects
- Stormwater management retrofits
- Partnership between the Chesapeake Bay Trust, EPA Region III, the City of Baltimore Office of Sustainability with support by Maryland DNR
- Website: <https://cbtrust.org/grants/green-streets-green-jobs-green-towns/>

Funding amount: up to \$75,000

Application deadline: ~March 2020

Contact: Jeffrey Popp, JPopp@cbtrust.org

Community Engagement Mini Grant Program (OPEN NOW- ROLLING)

Goals:

- Engage new applicants and organizations from a diverse array of communities in small-scale projects that enhance communities, engage residents, and, ultimately, improve natural resources
- Funded by the Bay Plate
- Website: <https://cbtrust.org/grants/community-engagement/>

Funding amount: up to \$5,000

Application deadline: Rolling

Contact: Bre'Anna Brooks, BBrooks@cbtrust.org

Who to Contact

- City of Salisbury inquiries to Sadie Drescher, Director of Restoration Programs, sdrescher@cbtrust.org and 410-974-2941 xt 105
- Restoration inquires to Sarah T. Koser, Skoser@cbtrust.org B
- Outreach and engagement inquires to Bre'Anna Brooks, BBrooks@cbtrust.org



<https://cbtrust.org>

We appreciate our partner

