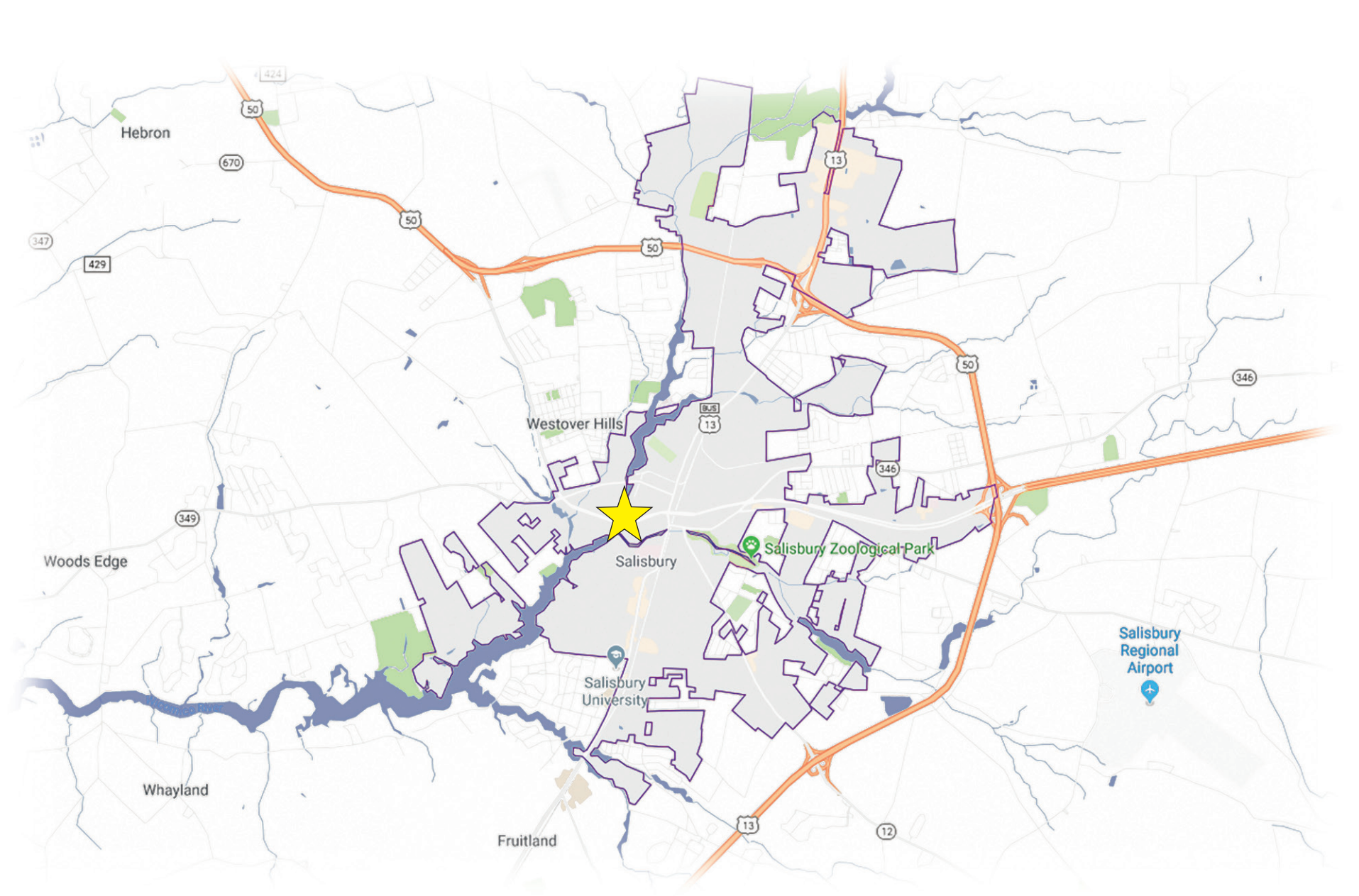


# Salisbury, MD: Land/Water/People

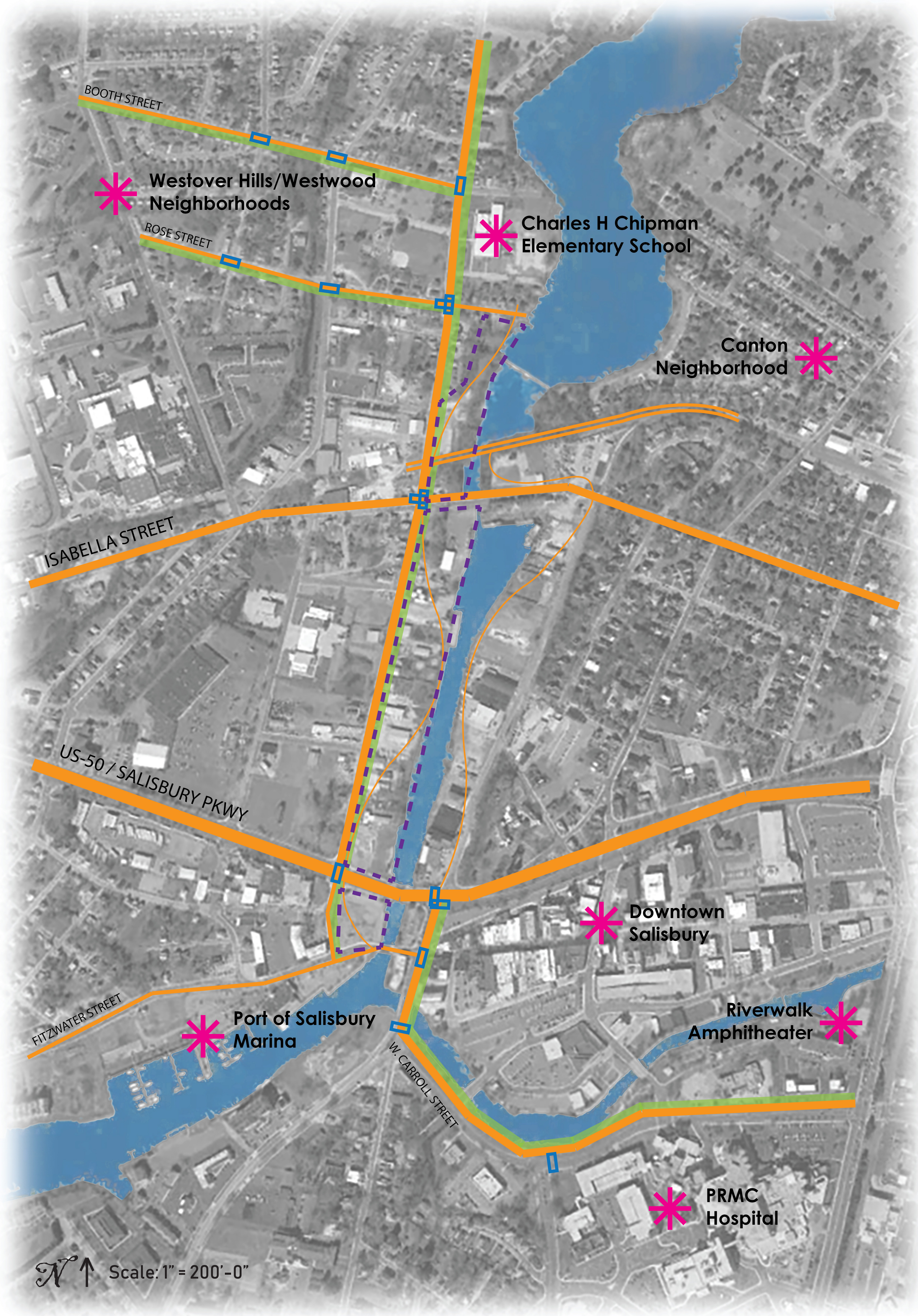
Addressing terrain, water, and connections to promote coexistence and bolster growth

## Our Project Goals:

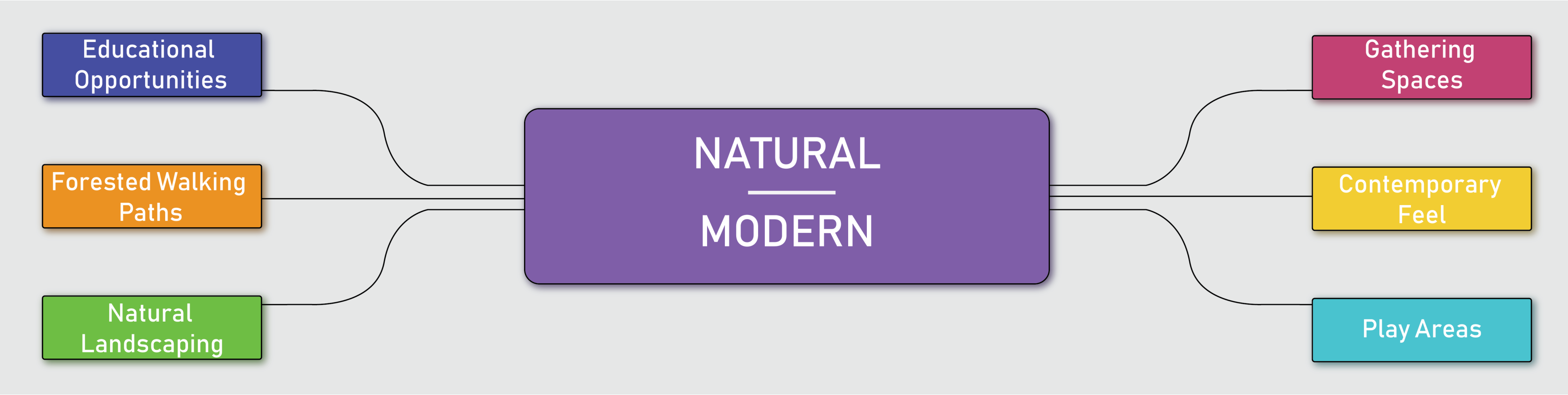
- Connect surrounding institutions (schools, hospitals, businesses)
- Respond to citizen interests and needs
- Promote plant ecologies & wildlife
- Enhance community partnerships
- Mitigate flooding impacts (storms, sea level rise)
- Provide an inviting gateway into the city



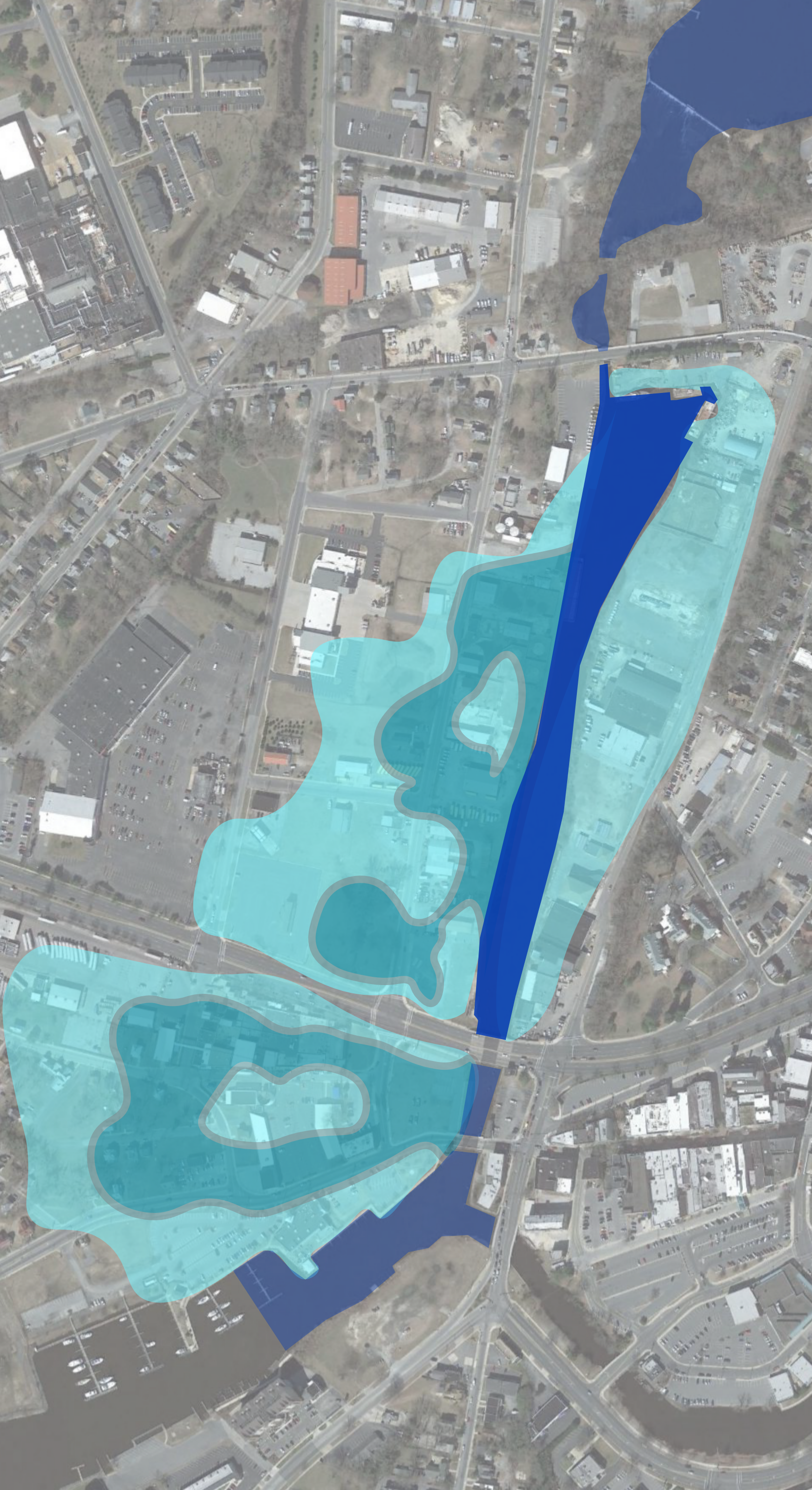
## CONNECTIONS/CONTEXT MAP



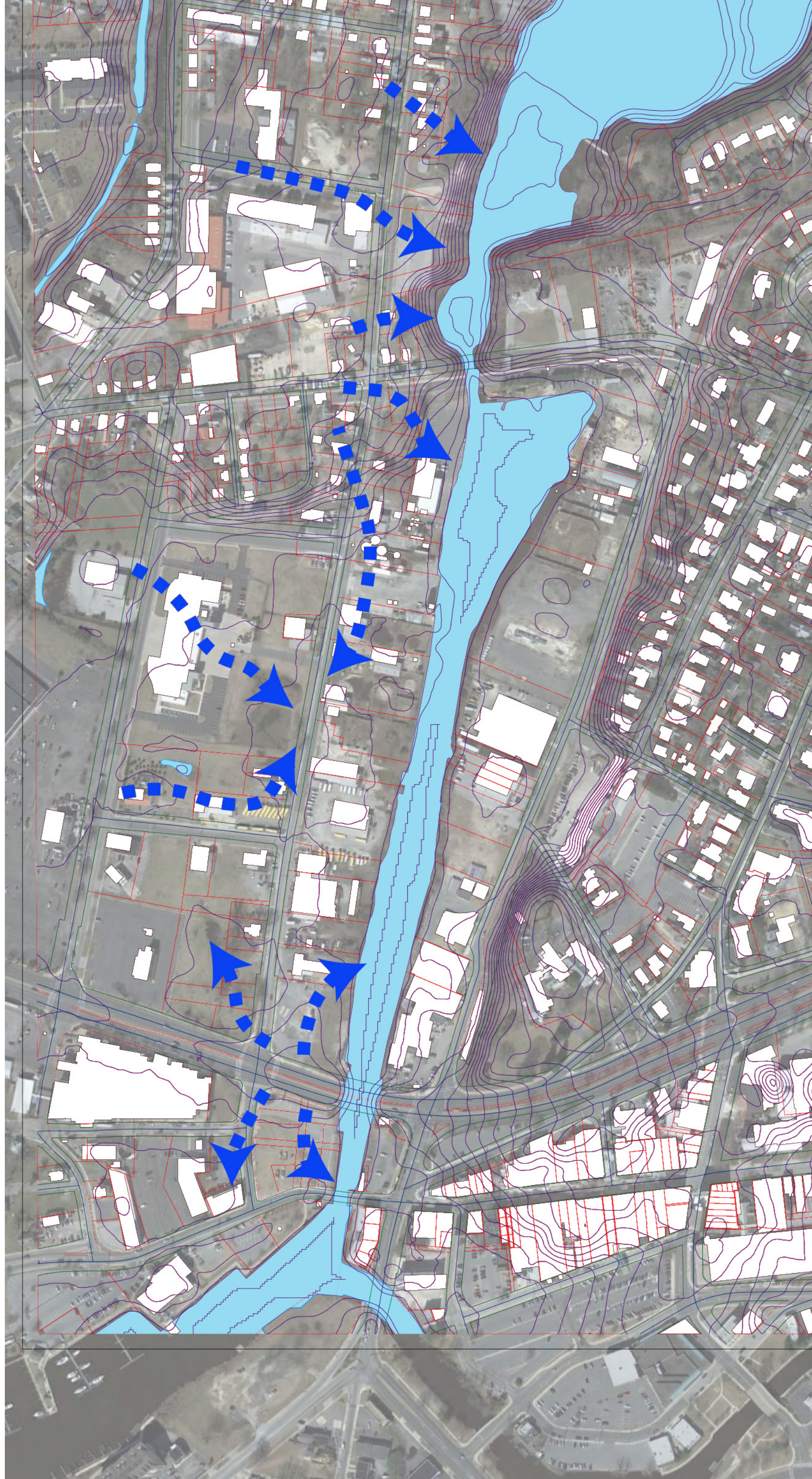
## Community Outreach Design Influence



## Flooding Diagram



## Stormwater Diagram



## COMMUNITY SPECIES PALETTE

### Upland Meadow Plants



Andropogon gerardii



Erigeron pulchellus



Penstemon digitalis



Heliopsis helianthoides



Lespedeza capitata



Lupinus perennis



Ceanothus americanus



Rhus glabra

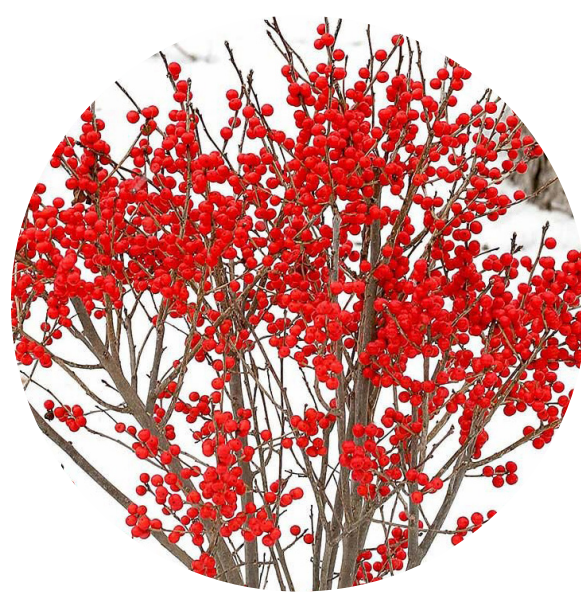
### Lowland/Wet Meadow Plants



Calamagrostis canadensis



Agalinis purpurea



Ilex verticillata



Verbena hastata



Tripsacum dactyloides



Caltha palustris



Solidago rugosa



Viola conspersa

### Wetland Plants



Panicum virgatum



Eupatorium dubium



Itea virginica



Sparganium americanum



Leersia oryzoides



Clethra alnifolia



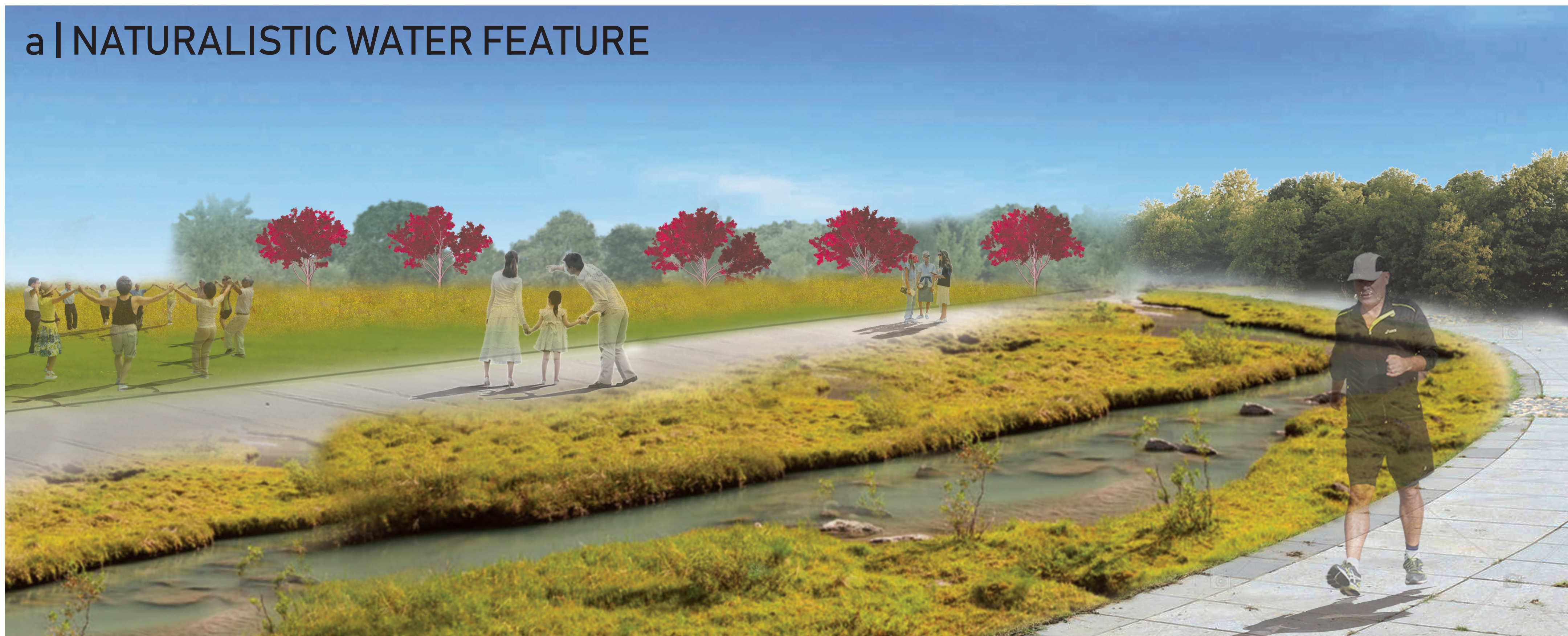
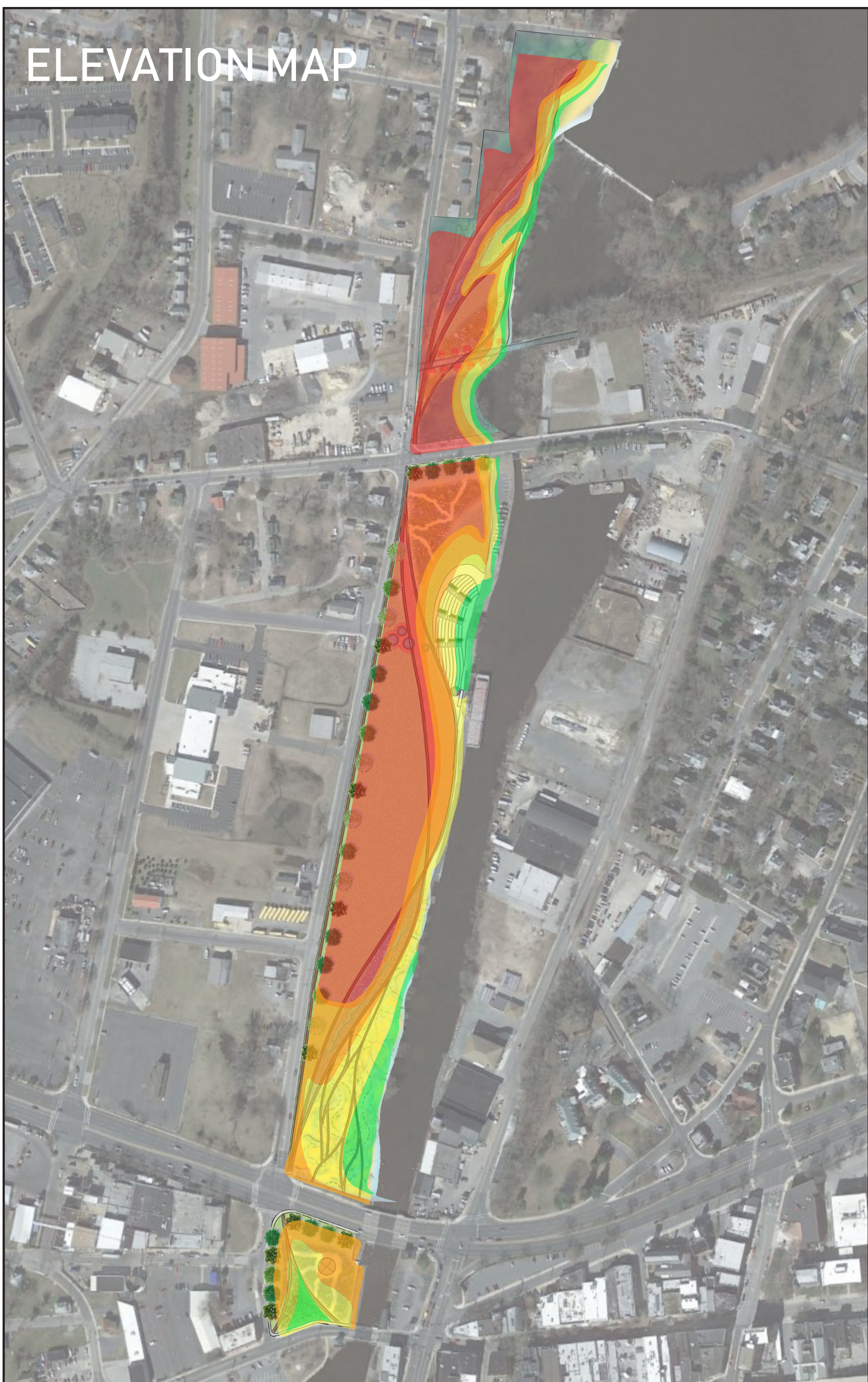
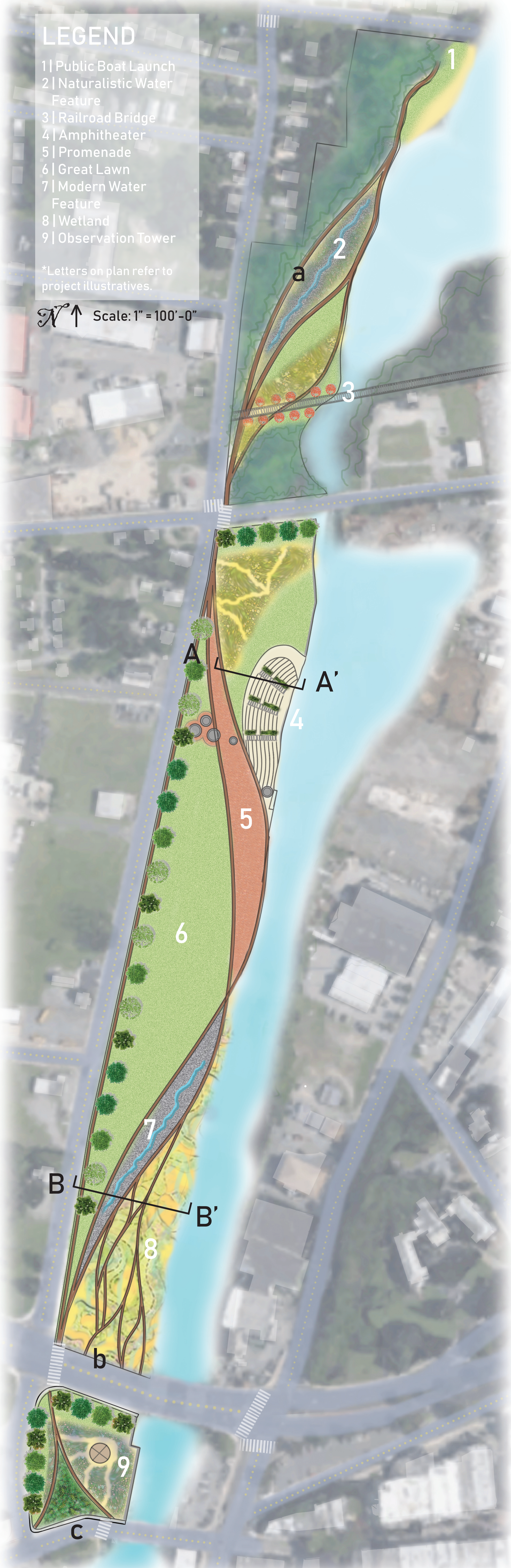
Juncus effusus



Monarda didyma



# RIVERWALK MASTER PLAN



SECTION/ELEVATIONS vertical scale: 1"=5'-0" | horizontal scale: 1" = 10'-0"

