

401 E. CHURCH ST.  
SALISBURY, MARYLAND

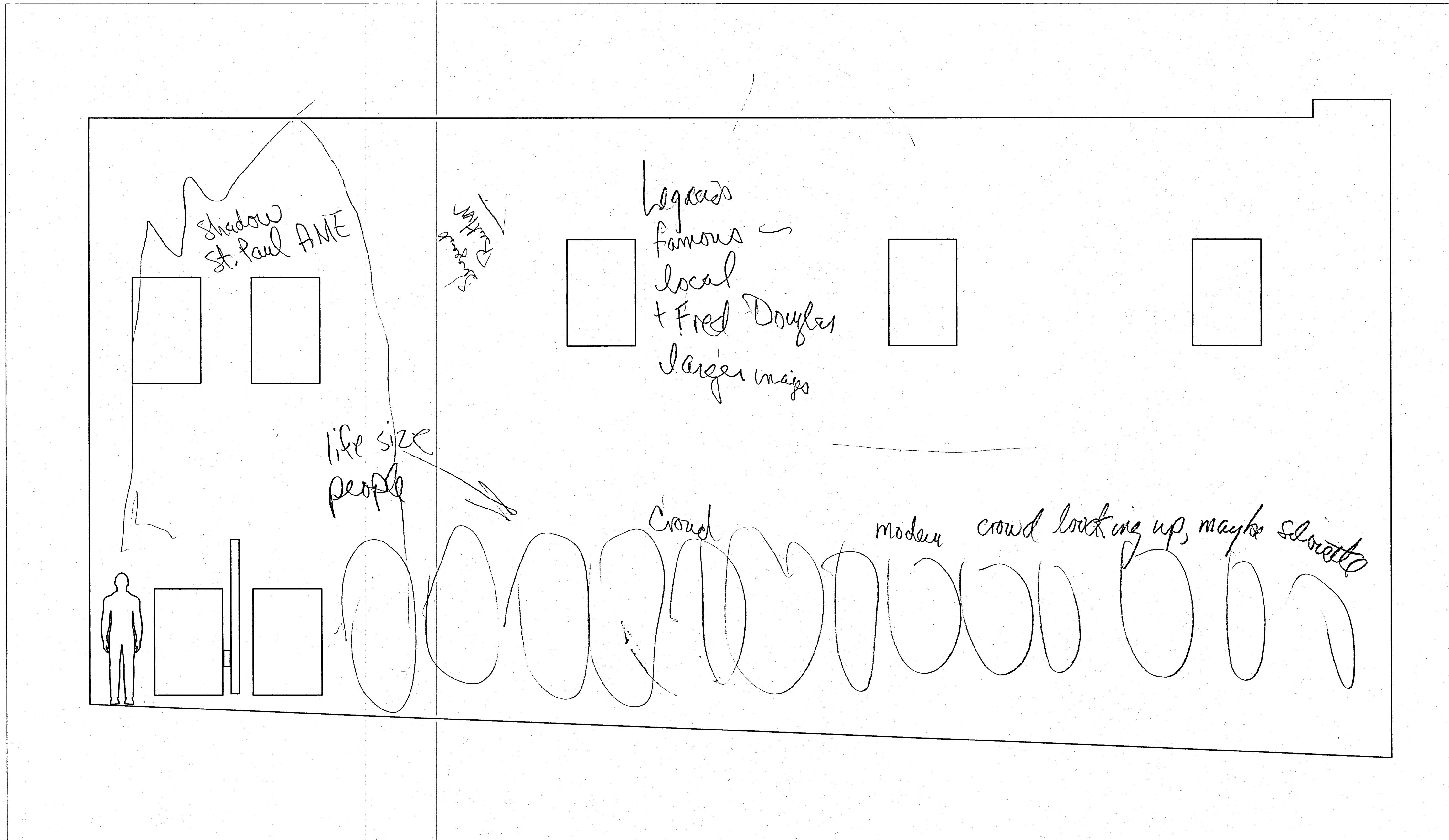
DIMENSIONS ARE ROUNDED TO THE NEAREST TENTH OF A FOOT

DRAWN BY DEPT. of INFRASTRUCTURE and DEVELOPMENT

SCALE: 1" = 4'

FILE: DCA19015





401 E. CHURCH ST.  
SALISBURY, MARYLAND

SCALE: 1" = 4'

DRAWN BY DEPT. of INFRASTRUCTURE and DEVELOPMENT

FILE: DCA19015

SUSAN HOCT 443-783-6343

Concept.

1901-2011

1901-2011

Church St  
Salisbury

not just  
african  
american



Burger stand  
on Church St.

Service to Community

Service to Country

Service to Future World

\*Demetria

TRASH

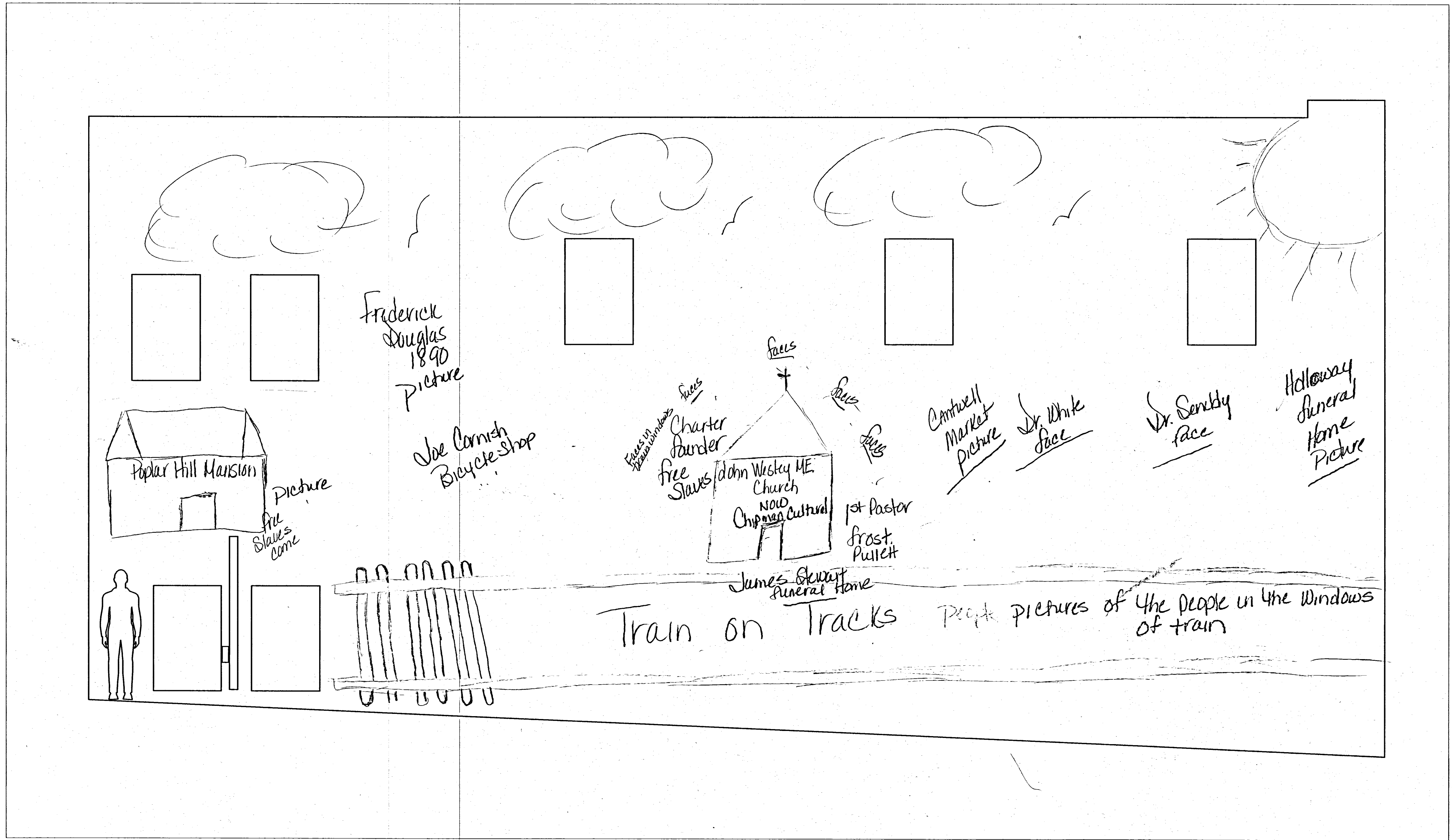
Remember  
the  
burger  
stand

SCALE: 1" = 4'

401 E. CHURCH ST.  
SALISBURY, MARYLAND

DRAWN BY DEPT. of INFRASTRUCTURE and DEVELOPMENT

FILE: DCA19015



401 E. CHURCH ST.  
SALISBURY, MARYLAND

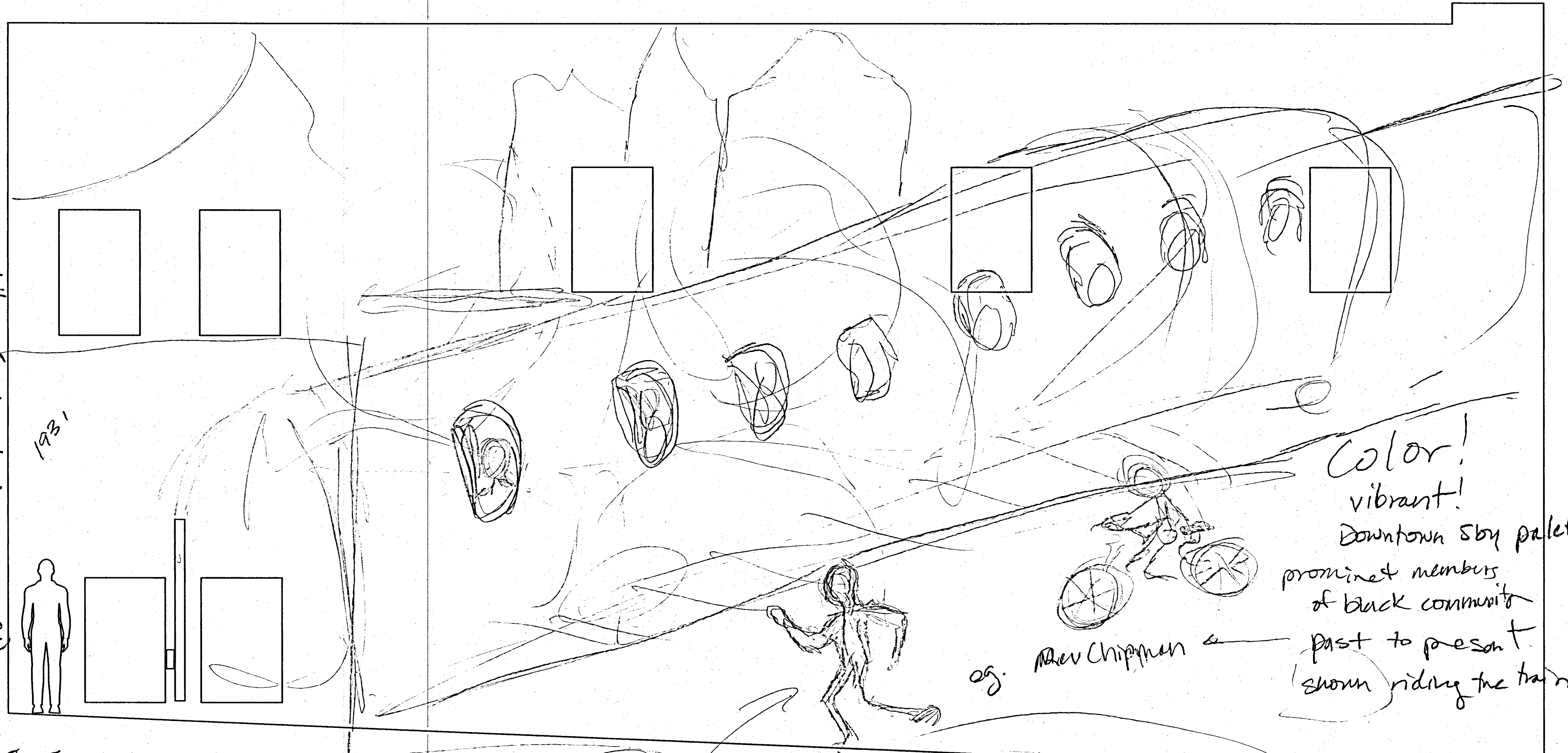
SCALE: 1" = 4'

DRAWN BY DEPT. of INFRASTRUCTURE and DEVELOPMENT

FILE: DCA19015

Mary Gladys Jones,

? Black & white (older history on left)  
change to color on right (most recent on right)



Color!  
vibrant!  
Downtown Sby palette  
prominent members  
of black community  
past to present  
shown riding the train

eg. Rev Chipman

Train through times  
Black & White to color



Silhouettes?  
of people (kids?)  
waving at the passengers  
kids chasing the  
TRAIN?  
trigg'g?

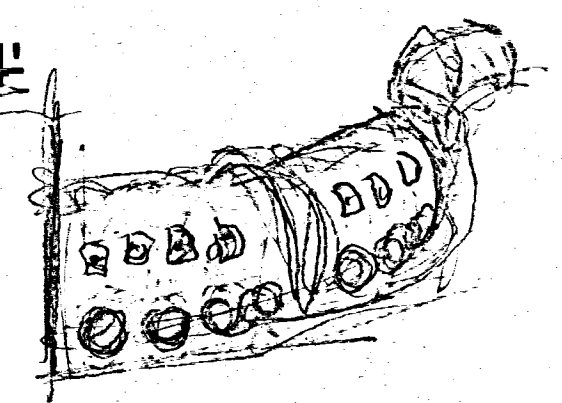
Train w/ faces in window  
yellow tracks

Georgetown - when?

401 E. CHURCH ST.  
SALISBURY, MARYLAND

INCORPORATE  
GRAFFITI  
to represent YOUTH.

SCALE: 1" = 4'



DRAWN BY DEPT. of INFRASTRUCTURE and DEVELOPMENT

FILE: DCA19015