

## Salisbury Fire Department Quarterly Report October - December 2016

Fire Incident Type	2nd Qtr.	FY16 YTD	% of Quarter
Structure Fires	12	29	1%
Cooking fire	5	13	1%
Vehicle Fires	5	10	1%
Natural Cover/Brush	9	23	1%
Trash/Dumpster	11	18	1%
Fire, Other	7	17	1%
Medical	361	741	41%
Vehicle Accidents	156	298	18%
Rescue Calls	13	22	1%
Hazardous Conditions	43	88	5%
Service Calls	48	115	5%
Good Intent Calls	92	187	11%
False Alarms	109	231	12%
Other Incident Type	3	20	0%
<b>Totals</b>	<b>874</b>	<b>1812</b>	

Workers Compensation Summary	2nd Qtr.	FY16 YTD
1 - Needle stick, 1 - Chest pain, 1 - Back	3	14
Hours lost due to Injuries	68.5	112.5

Fire Incidents by Fire Station	2nd Qtr.	FY16 YTD	% of Quarter
Station 1	198	439	23%
Station 2	200	436	23%
Station 16	476	937	54%

Fire Loss Data	2nd Qtr.	FY16 YTD	% of Quarter
Property Value	\$26,943,152	\$72,421,208	N/A
Property Destroyed	\$599,365	\$1,566,808	2%
Property Saved	\$26,343,787	\$70,854,400	98%

Fire Prevention Summary	2nd Qtr.	FY16 YTD
Fire Inspections/Preplans	17	25
Plan Reviews	6	9
Smoke Alarms Distributed	102	164
Smoke Alarms Installed	0	8
Public Education Events		
a. Adults in Attendance	1600	3936
b. Children in Attendance	3331	4485

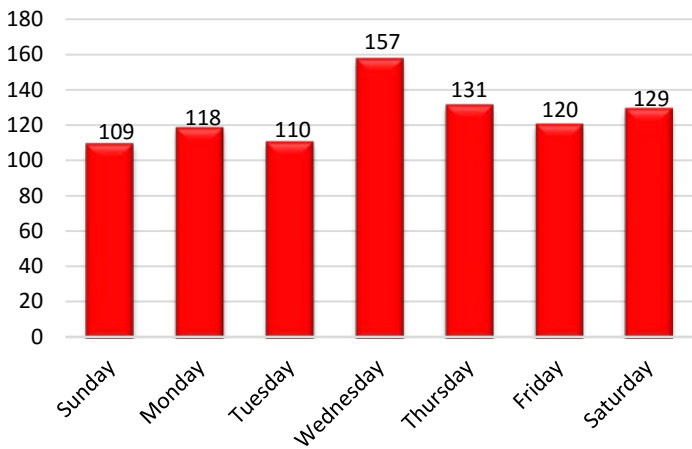
Medical Chief Complaints	2nd Qtr.	FY16 YTD	% of Quarter
Abdominal Pain/GI Problem	140	283	5.89%
Allergic Reaction/Bites/Stings	12	24	0.50%
Altered Level of Consciousness	41	89	1.72%
Behavioral/Psychiatric	45	97	1.89%
Breathing Problem	46	82	1.94%
Burns/Smoke Inhalation	2	6	0.08%
Cardiac/Respiratory Arrest/DOA	29	62	1.22%
Cardiac Problems	153	302	6.44%
Choking/Airway Obstruction	1	4	0.04%
Diabetic Problem	52	112	2.19%
Drug/Alcohol	77	190	3.24%
Nausea/Vomiting	51	92	2.15%
No Apparent Injury	122	230	5.13%
OB/GYN/Pregnancy/Childbirth	14	32	0.59%
Other	1001	1978	42.11%
Respiratory Distress	73	139	3.07%
Seizure/Convulsions	65	139	2.73%
Sick Person/Flu-like	105	190	4.42%
Stroke/CVA/TIA	35	62	1.47%
Syncope/Fainting	42	90	1.77%
Traumatic Injury	149	307	6.27%
Unconscious	15	38	0.63%
Weakness	107	185	4.50%
<b>Totals</b>	<b>2377</b>	<b>4733</b>	

Training	Classes	Attendees	Hours
Administrative	47	156	246
Engine Co. Ops	22	122	232.5
EMS	28	114	1304.75
Driver Operator	29	156	312
General	13	51	84
Incident Command	12	52	99.98
Rescue Company Ops	15	86	124.75
Special Ops	22	97	178.25
Truck Company Ops	17	64	79.5
<b>Totals - 1st Quarter</b>	<b>205</b>	<b>898</b>	<b>2661.73</b>
<b>FY16 YTD Totals</b>	<b>436</b>	<b>1885</b>	<b>4275.65</b>

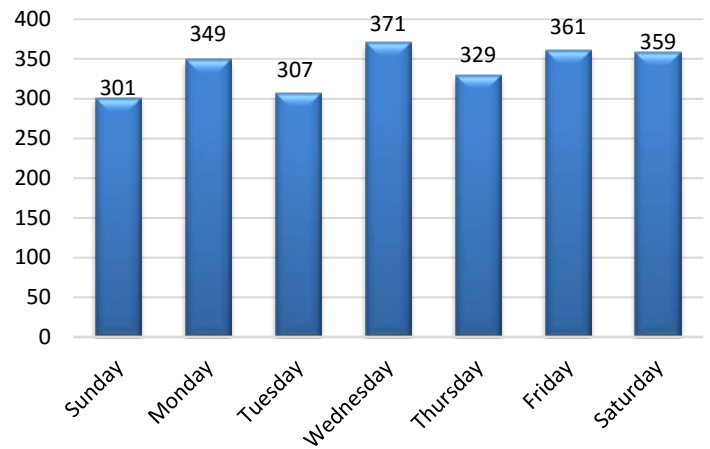
Department Aid Summary	2nd Qtr.	FY16 YTD
Mutual Aid Given	25	42
Mutual Aid Received	56	100

# Salisbury Fire Department Quarterly Report October - December 2016

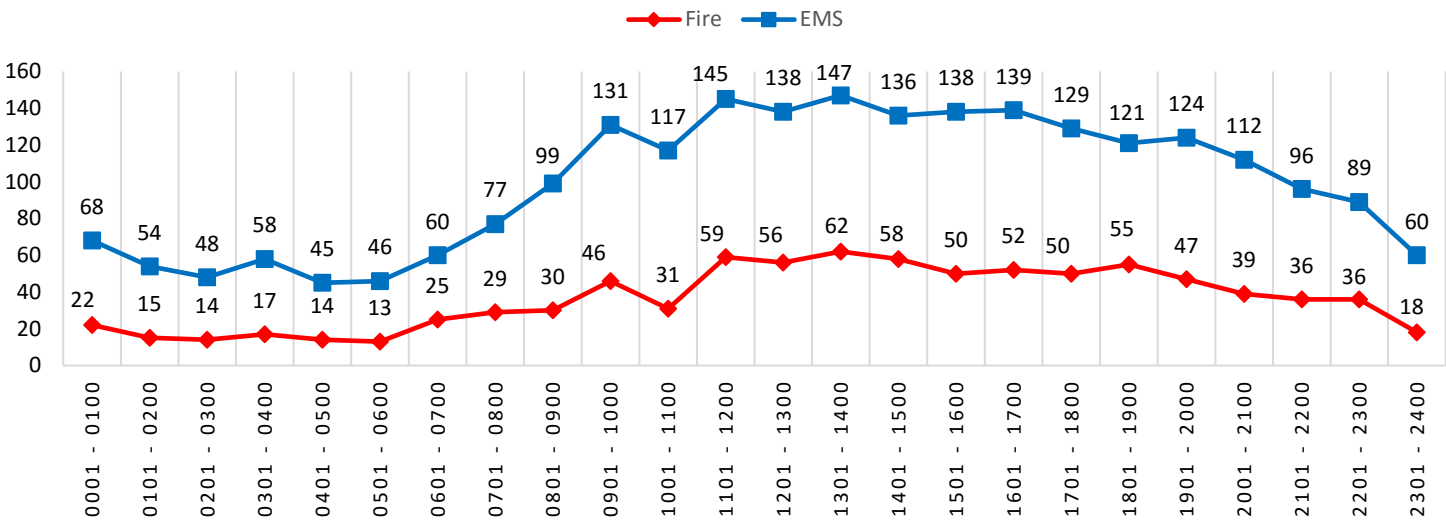
### Fire Call Volume Day of Week



### EMS Call Volume Day of Week



### FIRE & EMS CALL VOLUME BY HOUR



### Fire Containment 2nd Quarter FY16

