



Salisbury Police Department
699 W. Salisbury Parkway
Salisbury, MD 21801
(410) 548-3165



PRESS RELEASE

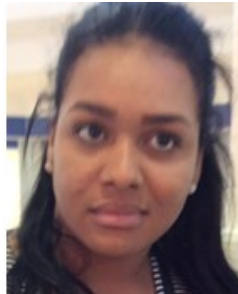
**June 27, 2017 (3:10 p.m.)
(Fraud Investigation)**

Detectives are currently working with Kent County Sheriff's Office in an effort to identify a suspect involved in ongoing fraud investigation.

On July 21, 2017, Salisbury Police Department Detectives were contacted by the Kent County Sheriff's Office concerning an identity theft investigation. Members of the Kent County Sheriff's Office learned, through the course of their investigation, that the below pictured female had illegally obtained the personal identity information of several victims in the Kent County area. Further investigation revealed that the female is reportedly using the stolen information here in the Salisbury area to fraudulently open credit cards at area businesses and purchase items at retail establishments in and around the Salisbury, Maryland area.

The below pictured individual is suspected of using the fraudulently obtained credit cards in conjunction with a fraudulently obtained Maryland driver's license to facilitate the purchase of various items from Salisbury area retail establishments. Salisbury detectives are requesting the public's assistance to identify this suspect as they work with the local retail establishments to determine an exact total of the stolen merchandise.

This is an ongoing investigation and anyone who may have information related to the identity of this suspect can contact Crime Solvers of the Lower Eastern Shore at (410) 548-1776, or the Salisbury Police Department at (410)548-3165.



Unknown Suspect

For up to date information follow us: [Twitter@SalisburyPD](https://twitter.com/SalisburyPD) and [Facebook.com/SalisburysFinest](https://www.facebook.com/SalisburysFinest).

CASE # 201700032713

Capt. Rich Kaiser