

RESOLUTION NO. 2484

A RESOLUTION OF THE CITY OF SALISBURY, MARYLAND, TO DEFINE, PRESERVE AND MAINTAIN THE STORMWATER CONSERVATION AREA FOR THE SALISBURY SKATEPARK.

WHEREAS, the Council of the City of Salisbury recognizes the important role that our local parks, playgrounds and recreational areas play in maintaining a healthy, pleasant, attractive environment for the enjoyment of our local residents; and,

WHEREAS, the Council wishes to rehabilitate, improve and expand the parks, playgrounds and recreational areas within the City of Salisbury in order to improve the quality of life for all citizens; and,

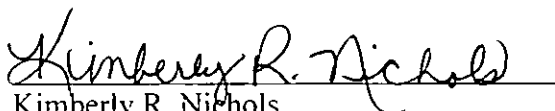
WHEREAS, the Maryland Department of Natural Resources has awarded a Community Parks and Playgrounds (CP&P) grant to the City for Phase 1 of the Salisbury Skatepark; and,

WHEREAS, a Stormwater Management Plan has been developed for the Salisbury Skatepark, which includes a conservation area as shown on the attached map, to be preserved and maintained for any stormwater runoff which may be generated by the Skatepark; and,


WHEREAS, Maryland Stormwater regulations require an enduring agreement to safeguard this Stormwater Conservation Area to ensure that it is protected and maintained in perpetuity for the life of the Skatepark.

NOW, THEREFORE, BE IT RESOLVED, on this 9th day of March, 2015, that the City of Salisbury, Maryland, does hereby decree that the Stormwater Conservation Area for the Salisbury Skatepark will be designated on all necessary plans, marked by signs, and protected and perpetually maintained for the life of the Skatepark.

THE ABOVE RESOLUTION, was introduced and duly passed at a meeting of the Council of the City of Salisbury held on March 9, 2015, and is to become effective immediately.

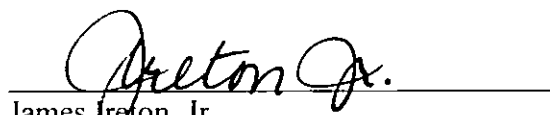


Kimberly R. Nichols
CITY CLERK



Jacob R. Day
COUNCIL PRESIDENT

APPROVED BY ME THIS
18th day of March 2015.



James Ireton, Jr.
MAYOR

Office of Community Development
MEMO

To: Tom Stevenson

From: Deborah Stam

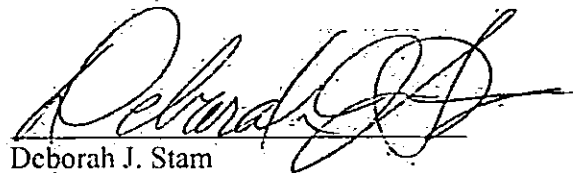
**Subject: Resolution to Define, Preserve and Maintain the
Stormwater Conservation Area for the Salisbury
Skatepark**

Date: February 5, 2015

As required by State of Maryland regulations, a Stormwater Management Plan has been developed for the Salisbury Skatepark. This plan includes a conservation area as shown on the attached map, which is to be preserved and maintained to deal with any stormwater runoff that may be generated by the Skatepark.

Maryland Stormwater regulations require that an enduring agreement be created to safeguard this Stormwater Conservation Area in order to ensure that it is protected and maintained in perpetuity for the life of the Skatepark.

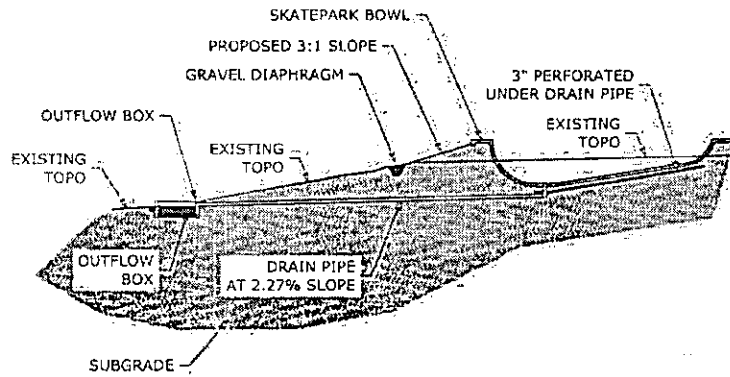
Attached is a Resolution to define, preserve and maintain the Stormwater Conservation Area for the Salisbury Skatepark. Please forward this Resolution to the City Council so that it may be placed on their agenda for the meeting on March 9, 2015.



Deborah J. Stam
Community Development Director

Attachments

CC: Amanda Pollack
Rick Baldwin
Ginny Hussey



SECTION 1 - STORM WATER PROFILE

SCALE: 1"=10'

NOTES

1. FINE GRADE ALL AREAS DESTROYED BY CONSTRUCTION OR DRAINAGE.
2. ALL SPOT ELEVATIONS ARE TOP OF CONCRETE UNLESS OTHERWISE NOTED.
3. MINIMUM SLOPE FOR ALL TOP DECK AND FLATBOTTOM AREAS SHALL BE 1/8" (1 INCH) PER 1' (10 FEET) @ 1.00%.
4. THE TOP OF ALL ROUND COPING SHALL BE 4" (1/2 INCH) ABOVE THE TOP OF CONCRETE FLEEWALLS.

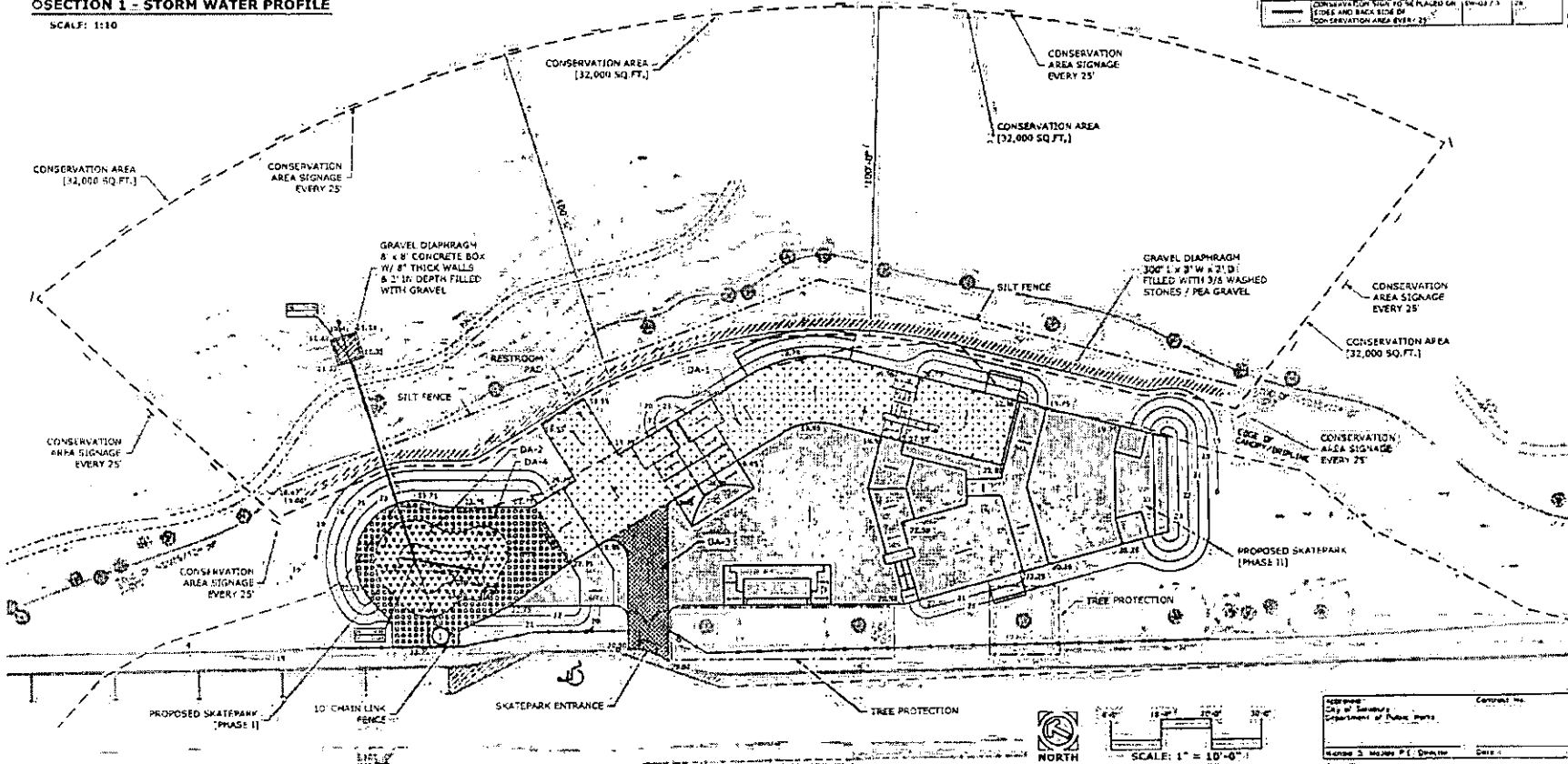
SITE DATA	
SITE AREA	31 ACRES
TOTAL IMPERVIOUS AREA	32 ACRES
TOTAL LOT	100 ACRES
TOTAL PAV.	200 ACRES
TOTAL ENGINEERED AREA	400 ACRES
PERMITTED IMPERVIOUS AREA (PHASE I)	100 SQ. FT.
NET CHANGE IN IMPERVIOUS AREA	100 SQ. FT.
CONSERVATION AREA	100 SQ. FT.

ABBREVIATIONS

SYMBOL	DESCRIPTION	DETAILS	QUANTITY
---	TOP OF CONCRETE EXIST. ELEVATION	NA	NA
○	1" (1 INCH) ROUND DRAIN INLET	SP-07.2	1
—○—	12" PERFORATED DRAIN LINE	SP-08.2.1	1
—○—	6" PERFORATED DRAIN LINE	SP-08.2.2	1
—○—	4" PERFORATED DRAIN LINE	SP-08.2.3	1
—○—	3" PERFORATED DRAIN LINE	SP-08.2.4	1
—○—	2" PERFORATED DRAIN LINE	SP-08.2.5	1
—○—	1" PERFORATED DRAIN LINE	SP-08.2.6	1
—○—	1/2" PERFORATED DRAIN LINE	SP-08.2.7	1
—○—	1/4" PERFORATED DRAIN LINE	SP-08.2.8	1
—○—	1/8" PERFORATED DRAIN LINE	SP-08.2.9	1
—○—	1/4" PERFORATED DRAIN LINE	SP-08.2.10	1
—○—	1/8" PERFORATED DRAIN LINE	SP-08.2.11	1
—○—	1/4" PERFORATED DRAIN LINE	SP-08.2.12	1
—○—	1/8" PERFORATED DRAIN LINE	SP-08.2.13	1
—○—	1/4" PERFORATED DRAIN LINE	SP-08.2.14	1
—○—	1/8" PERFORATED DRAIN LINE	SP-08.2.15	1
—○—	1/4" PERFORATED DRAIN LINE	SP-08.2.16	1
—○—	1/8" PERFORATED DRAIN LINE	SP-08.2.17	1
—○—	1/4" PERFORATED DRAIN LINE	SP-08.2.18	1
—○—	1/8" PERFORATED DRAIN LINE	SP-08.2.19	1
—○—	1/4" PERFORATED DRAIN LINE	SP-08.2.20	1
—○—	1/8" PERFORATED DRAIN LINE	SP-08.2.21	1
—○—	1/4" PERFORATED DRAIN LINE	SP-08.2.22	1
—○—	1/8" PERFORATED DRAIN LINE	SP-08.2.23	1
—○—	1/4" PERFORATED DRAIN LINE	SP-08.2.24	1
—○—	1/8" PERFORATED DRAIN LINE	SP-08.2.25	1
—○—	1/4" PERFORATED DRAIN LINE	SP-08.2.26	1
—○—	1/8" PERFORATED DRAIN LINE	SP-08.2.27	1
—○—	1/4" PERFORATED DRAIN LINE	SP-08.2.28	1
—○—	1/8" PERFORATED DRAIN LINE	SP-08.2.29	1
—○—	1/4" PERFORATED DRAIN LINE	SP-08.2.30	1
—○—	1/8" PERFORATED DRAIN LINE	SP-08.2.31	1
—○—	1/4" PERFORATED DRAIN LINE	SP-08.2.32	1
—○—	1/8" PERFORATED DRAIN LINE	SP-08.2.33	1
—○—	1/4" PERFORATED DRAIN LINE	SP-08.2.34	1
—○—	1/8" PERFORATED DRAIN LINE	SP-08.2.35	1
—○—	1/4" PERFORATED DRAIN LINE	SP-08.2.36	1
—○—	1/8" PERFORATED DRAIN LINE	SP-08.2.37	1
—○—	1/4" PERFORATED DRAIN LINE	SP-08.2.38	1
—○—	1/8" PERFORATED DRAIN LINE	SP-08.2.39	1
—○—	1/4" PERFORATED DRAIN LINE	SP-08.2.40	1
—○—	1/8" PERFORATED DRAIN LINE	SP-08.2.41	1
—○—	1/4" PERFORATED DRAIN LINE	SP-08.2.42	1
—○—	1/8" PERFORATED DRAIN LINE	SP-08.2.43	1
—○—	1/4" PERFORATED DRAIN LINE	SP-08.2.44	1
—○—	1/8" PERFORATED DRAIN LINE	SP-08.2.45	1
—○—	1/4" PERFORATED DRAIN LINE	SP-08.2.46	1
—○—	1/8" PERFORATED DRAIN LINE	SP-08.2.47	1
—○—	1/4" PERFORATED DRAIN LINE	SP-08.2.48	1
—○—	1/8" PERFORATED DRAIN LINE	SP-08.2.49	1
—○—	1/4" PERFORATED DRAIN LINE	SP-08.2.50	1
—○—	1/8" PERFORATED DRAIN LINE	SP-08.2.51	1
—○—	1/4" PERFORATED DRAIN LINE	SP-08.2.52	1
—○—	1/8" PERFORATED DRAIN LINE	SP-08.2.53	1
—○—	1/4" PERFORATED DRAIN LINE	SP-08.2.54	1
—○—	1/8" PERFORATED DRAIN LINE	SP-08.2.55	1
—○—	1/4" PERFORATED DRAIN LINE	SP-08.2.56	1
—○—	1/8" PERFORATED DRAIN LINE	SP-08.2.57	1
—○—	1/4" PERFORATED DRAIN LINE	SP-08.2.58	1
—○—	1/8" PERFORATED DRAIN LINE	SP-08.2.59	1
—○—	1/4" PERFORATED DRAIN LINE	SP-08.2.60	1

LEGEND

SYMBOL	DESCRIPTION	DETAILS	QUANTITY
---	TOP OF CONCRETE EXIST. ELEVATION	NA	NA
○	1" (1 INCH) ROUND DRAIN INLET	SP-07.2	1
—○—	12" PERFORATED DRAIN LINE	SP-08.2.1	1
—○—	6" PERFORATED DRAIN LINE	SP-08.2.2	1
—○—	4" PERFORATED DRAIN LINE	SP-08.2.3	1
—○—	3" PERFORATED DRAIN LINE	SP-08.2.4	1
—○—	2" PERFORATED DRAIN LINE	SP-08.2.5	1
—○—	1" PERFORATED DRAIN LINE	SP-08.2.6	1
—○—	1/2" PERFORATED DRAIN LINE	SP-08.2.7	1
—○—	1/4" PERFORATED DRAIN LINE	SP-08.2.8	1
—○—	1/8" PERFORATED DRAIN LINE	SP-08.2.9	1
—○—	1/4" PERFORATED DRAIN LINE	SP-08.2.10	1
—○—	1/8" PERFORATED DRAIN LINE	SP-08.2.11	1
—○—	1/4" PERFORATED DRAIN LINE	SP-08.2.12	1
—○—	1/8" PERFORATED DRAIN LINE	SP-08.2.13	1
—○—	1/4" PERFORATED DRAIN LINE	SP-08.2.14	1
—○—	1/8" PERFORATED DRAIN LINE	SP-08.2.15	1
—○—	1/4" PERFORATED DRAIN LINE	SP-08.2.16	1
—○—	1/8" PERFORATED DRAIN LINE	SP-08.2.17	1
—○—	1/4" PERFORATED DRAIN LINE	SP-08.2.18	1
—○—	1/8" PERFORATED DRAIN LINE	SP-08.2.19	1
—○—	1/4" PERFORATED DRAIN LINE	SP-08.2.20	1
—○—	1/8" PERFORATED DRAIN LINE	SP-08.2.21	1
—○—	1/4" PERFORATED DRAIN LINE	SP-08.2.22	1
—○—	1/8" PERFORATED DRAIN LINE	SP-08.2.23	1
—○—	1/4" PERFORATED DRAIN LINE	SP-08.2.24	1
—○—	1/8" PERFORATED DRAIN LINE	SP-08.2.25	1
—○—	1/4" PERFORATED DRAIN LINE	SP-08.2.26	1
—○—	1/8" PERFORATED DRAIN LINE	SP-08.2.27	1
—○—	1/4" PERFORATED DRAIN LINE	SP-08.2.28	1
—○—	1/8" PERFORATED DRAIN LINE	SP-08.2.29	1
—○—	1/4" PERFORATED DRAIN LINE	SP-08.2.30	1
—○—	1/8" PERFORATED DRAIN LINE	SP-08.2.31	1
—○—	1/4" PERFORATED DRAIN LINE	SP-08.2.32	1
—○—	1/8" PERFORATED DRAIN LINE	SP-08.2.33	1
—○—	1/4" PERFORATED DRAIN LINE	SP-08.2.34	1
—○—	1/8" PERFORATED DRAIN LINE	SP-08.2.35	1
—○—	1/4" PERFORATED DRAIN LINE	SP-08.2.36	1
—○—	1/8" PERFORATED DRAIN LINE	SP-08.2.37	1
—○—	1/4" PERFORATED DRAIN LINE	SP-08.2.38	1
—○—	1/8" PERFORATED DRAIN LINE	SP-08.2.39	1
—○—	1/4" PERFORATED DRAIN LINE	SP-08.2.40	1
—○—	1/8" PERFORATED DRAIN LINE	SP-08.2.41	1
—○—	1/4" PERFORATED DRAIN LINE	SP-08.2.42	1
—○—	1/8" PERFORATED DRAIN LINE	SP-08.2.43	1
—○—	1/4" PERFORATED DRAIN LINE	SP-08.2.44	1
—○—	1/8" PERFORATED DRAIN LINE	SP-08.2.45	1
—○—	1/4" PERFORATED DRAIN LINE	SP-08.2.46	1
—○—	1/8" PERFORATED DRAIN LINE	SP-08.2.47	1
—○—	1/4" PERFORATED DRAIN LINE	SP-08.2.48	1
—○—	1/8" PERFORATED DRAIN LINE	SP-08.2.49	1
—○—	1/4" PERFORATED DRAIN LINE	SP-08.2.50	1
—○—	1/8" PERFORATED DRAIN LINE	SP-08.2.51	1
—○—	1/4" PERFORATED DRAIN LINE	SP-08.2.52	1
—○—	1/8" PERFORATED DRAIN LINE	SP-08.2.53	1
—○—	1/4" PERFORATED DRAIN LINE	SP-08.2.54	1
—○—	1/8" PERFORATED DRAIN LINE	SP-08.2.55	1
—○—	1/4" PERFORATED DRAIN LINE	SP-08.2.56	1
—○—	1/8" PERFORATED DRAIN LINE	SP-08.2.57	1
—○—	1/4" PERFORATED DRAIN LINE	SP-08.2.58	1
—○—	1/8" PERFORATED DRAIN LINE	SP-08.2.59	1
—○—	1/4" PERFORATED DRAIN LINE	SP-08.2.60	1



ADIRA
Pillar

SALISBURY SKATE PARK
SALISBURY, MARYLAND
DRAINAGE AREAS & PROPOSED CONDITIONS

SW-02
SKATE PARK

02 OF 41

City of Salisbury
Department of Public Works
George S. Moore P.E. Director