

ORDINANCE NO. 2356

AN ORDINANCE OF THE CITY OF SALISBURY, MARYLAND AMENDING TITLE 12, STREETS, SIDEWALKS AND PUBLIC PLACES, CHAPTER 12.24 WICOMICO RIVER REGULATIONS, OF THE CITY CODE BY ADDING SECTIONS 12.24.040 AND 12.24.050 FOR THE PURPOSE OF ESTABLISHING CRITERIA FOR RIVER ACCESS AND STANDARDS FOR RIVERWALK CONSTRUCTION UNDER THE DIRECTION AND SUPERVISION OF THE PUBLIC WORKS DEPARTMENT.

WHEREAS, the City maintains a Riverwalk along the Wicomico River and the South Prong of the Wicomico River from west of the Marina to State Route 13 on both sides of the waterway; and

WHEREAS, the Riverwalk allows for public access to and along the River in the City of Salisbury; and

WHEREAS, the Riverwalk is not continuous along the Wicomico River and the South Prong; and

WHEREAS, to provide the public and individual property owners with access to and along the River, properties proposed for development along the River in the area designated on the attached exhibit which are in the Riverfront Redevelopment District, the Central Business District and the General Commercial Zoning District shall be required to recognize and acknowledge the Riverwalk in conjunction with constructing other improvements on the property; and

WHEREAS, private development should be planned in a manner to complement public improvements; and

WHEREAS, the City of Salisbury will be responsible for future maintenance and improvements to the Riverwalk once constructed and deeded to the City.

NOW THEREFORE, BE IT ORDAINED BY THE CITY COUNCIL OF THE CITY OF SALISBURY, MARYLAND that Chapter 12.24 be amended by the addition of Sections 12.24.040 and 12.24.050 as set forth herein:

12.24.040 Public access to the Wicomico River.

All development within the corporate limits of the city adjacent to and binding upon the Wicomico River, the North Prong and the South Prong shall be consistent with public plans for access to and along the Wicomico River as illustrated on the attached exhibit. Along the Wicomico River, the properties included are in the Riverfront Redevelopment District and the Central Business District terminating at the west at Wicomico Street and Parcel 1109, Map 0106. Along the North Prong, the properties included are in the Riverfront Redevelopment District and the Central Business District. Along the South Prong, the properties included are in the Central Business District and the General Commercial District. During land development or redevelopment of a property located in the aforementioned locations along the Wicomico River,

the North Prong and the South Prong of the Wicomico River, the property owner shall reserve suitable area for construction of the Riverwalk to meet the City Construction Standards, Riverwalk Construction Standards and the applicable standards regulating subdivisions.

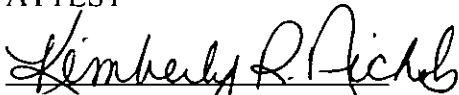
12.24.050 Riverwalk Construction Standards.

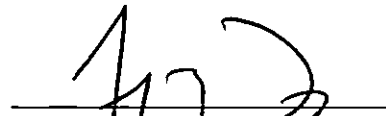
Pursuant to the City Code for the Chesapeake Bay Critical Area Natural Resources Program Section 12.20.500 Item D, the Riverwalk shall be eight (8) feet wide with a ten (10) foot wide vegetated buffer. The specific materials of construction are defined in the City Construction Standards. The Riverwalk shall include a railing and shall accommodate handicap accessibility. Per the City Construction Standards, the Riverwalk shall include benches, trash receptacles and lighting.

BE IT FURTHER ORDAINED that this ordinance shall take effect immediately upon passage and shall apply to any properties that submit for development or redevelop after the date of passage.

THIS ORDINANCE was introduced and read at a meeting of the Council of the City of Salisbury held on the 28 day of September, 2015, and thereafter, a statement of the substance of the Ordinance having been published as required by law, was finally passed by the Council on the 12 day of October, 2015.

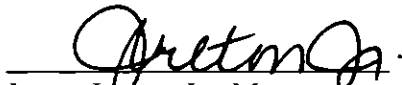
ATTEST


Kimberly R. Nichols, City Clerk


Jacob R. Day, President
Salisbury City Council

Approved by me this:

14th day of October, 2015


James Ireton, Jr. Mayor

City of Salisbury



MARYLAND




125 NORTH DIVISION STREET
SALISBURY, MARYLAND 21801
Tel: 410-548-3170
Fax: 410-548-3107

JAMES IRETON, JR.
MAYOR

M. THOMAS STEVENSON, JR.
CITY ADMINISTRATOR

JULIA GLANZ
ASSISTANT CITY ADMINISTRATOR

MICHAEL S MOULDS, P.E.
DIRECTOR OF PUBLIC WORKS

To: Tom Stevenson, City Administrator
From: Michael Moulds, Director of Public Works 
Date: July 17, 2015
Re: Wicomico River access and Riverwalk Ordinance

Over the years, the City of Salisbury has developed a Riverwalk from the Marina to downtown Salisbury on the Wicomico River and the South Prong of the Wicomico River. The Riverwalk is not continuous along both sides of the River, however it is the City's desire to provide public access along the entire length of the Wicomico River and the South Prong in the City limits.

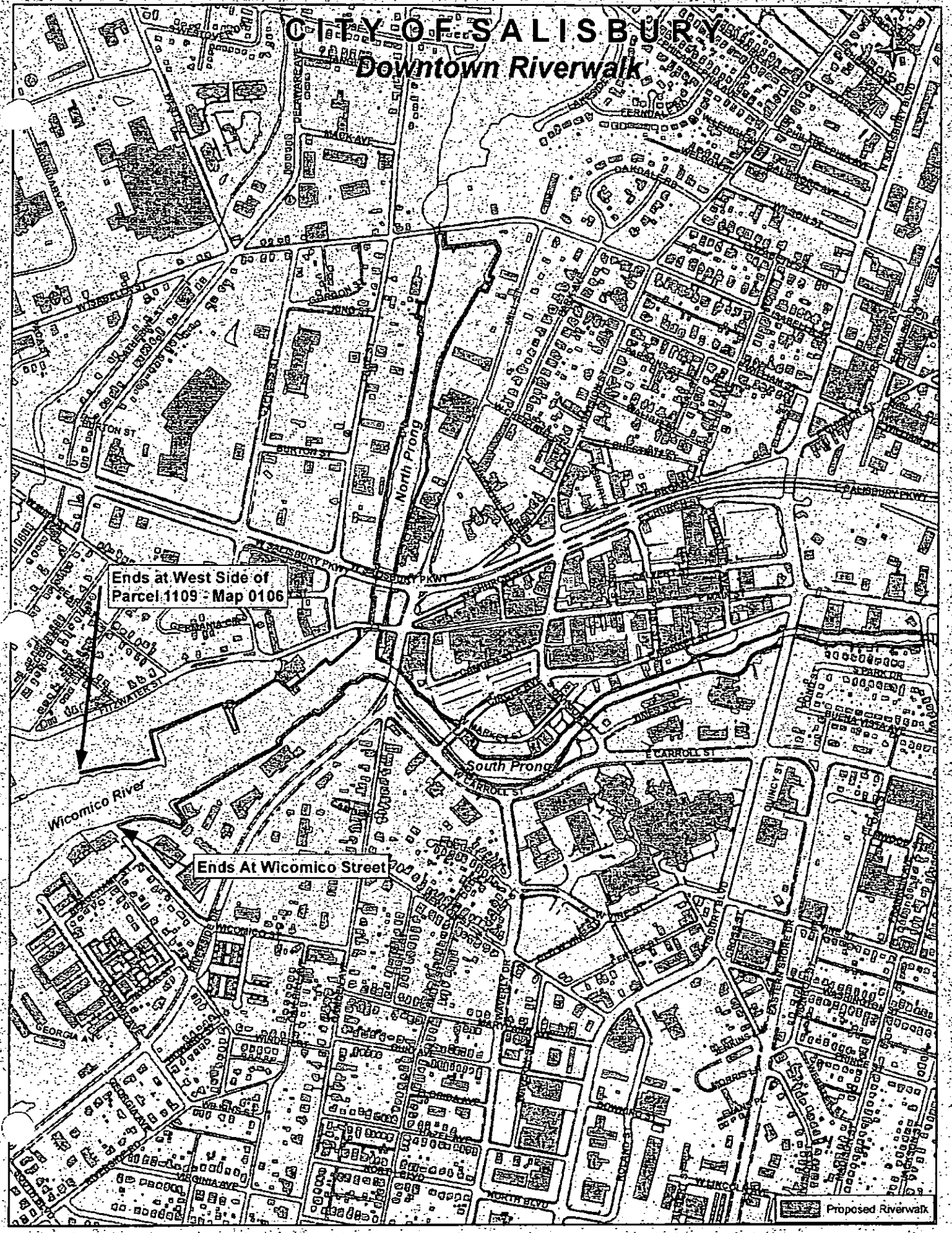
The attached Ordinances provides requirements for public access along the River and construction of the Riverwalk. As private properties develop along the River in the City, they will be required to construct the Riverwalk to City Standards.

The Ordinance has been revised per the discussion at the July 6, 2015 work session. The limits of the proposed Riverwalk have been expanded and redefined in the text and on the exhibit. Enhancements such as benches, trash cans and lighting has been added to the Standard Detail.

Unless you or the Mayor have further questions, please forward a copy of this memo and the Ordinance to the City Council.

CITY OF SALISBURY

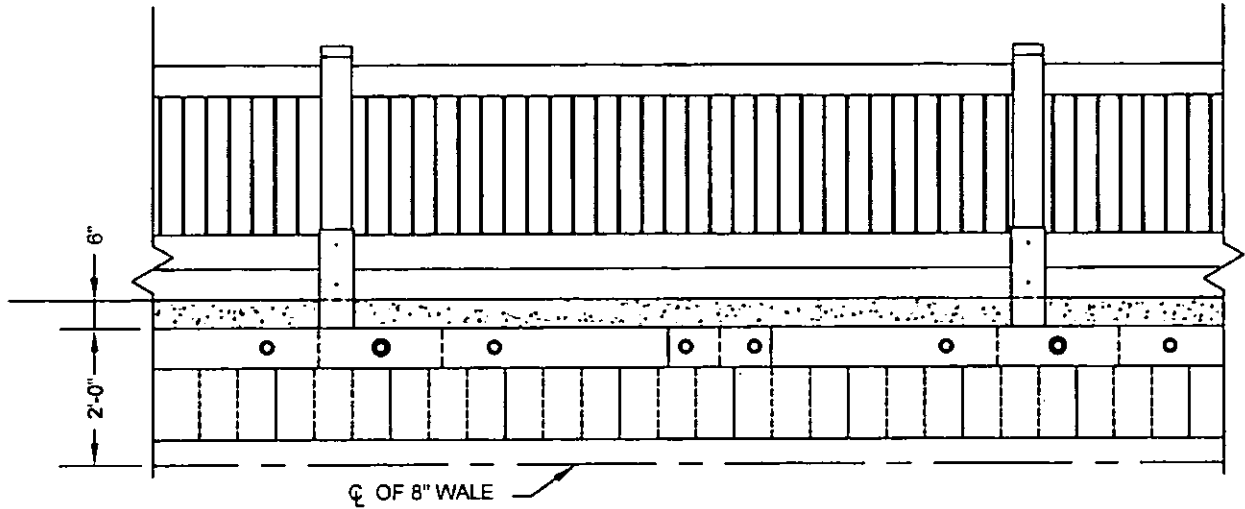
Downtown Riverwalk



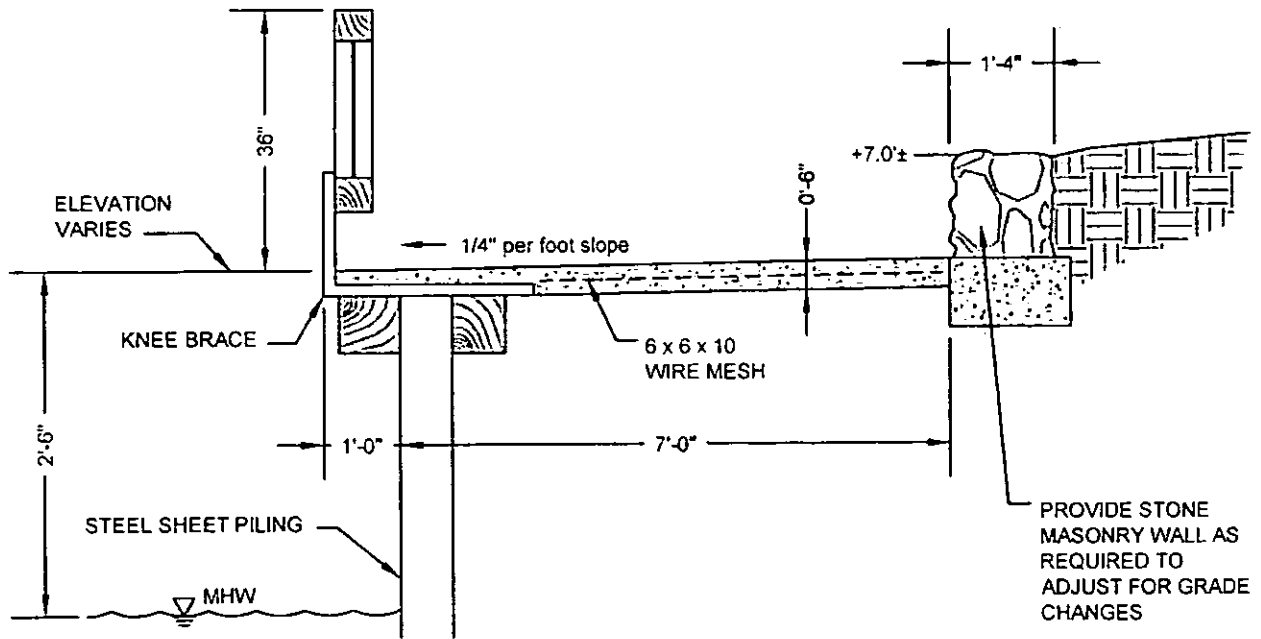
Ends at West Side of
Parcel 1109 - Map 0106

Ends At Wicomico Street

Proposed Riverwalk



ELEVATION



CROSS SECTION

NOTES:

1. RIVERWALK SURFACE SHALL BE STAMPED, COLORED CONCRETE. THE SURFACE SHALL HAVE A FORMED WOOD GRAIN TEXTURE AND THE CONCRETE SHALL BE COLORED GRAY. THE WOOD GRAIN PATTERN SHALL AS BE CLASSIC WOOD TEXTURE MAT, FM-8700 S/O MANUFACTURED BY BRICKFORM, SOLOMON COLORS, INC. OR APPROVED EQUIVALENT
2. BENCHES AND TRASH RECEPTACLES SHALL BE PLACED AT A MAXIMUM OF EVERY 200 FEET ALONG THE LENGTH OF THE RIVERWALK. AT A MINIMUM, EACH PROPERTY SHOULD HAVE ONE BENCH AND ONE TRASH RECEPTACLE. BENCHES AND TRASH RECEPTACLE SHALL MEET THE CITY STANDARDS.
3. LIGHTING SHALL BE PROVIDED PER CITY STANDARD 600.01.

<p>CITY OF SALISBURY SALISBURY, MD</p>	APPROVED	<p>RIVERWALK</p>	DATE 6/18/15
	DATE		SCALE NONE
	CITY ENGINEER		DWG. NO. STD60012
			STD. NO. 600.12