

ORDINANCE NO. 2312

AN ORDINANCE OF THE CITY OF SALISBURY TO ELIMINATE ELEVEN PARKING SPACES AND PROVIDE FOR A TOTAL OF TWO BUS PARKING SPACES ON WAYNE STREET AND TWO VEHICLE PARKING SPACES ON POWER STREET ADJACENT TO THE SALISBURY UNIVERSITY STADIUM.

WHEREAS, parking is permitted on the east and west sides of Wayne Street and the north and south sides of Power Street; and

WHEREAS, Salisbury University desires to eliminate nine (9) car parking spaces on Wayne Street, as shown on Exhibit A entitled Existing Conditions Plan, and add two (2) bus parking spaces on Wayne Street as shown on Exhibit B entitled Site Plan, to accommodate visiting team buses; and

WHEREAS, Salisbury University desires to eliminate two (2) car parking spaces on Power Street, as shown on Exhibit A, to accommodate an entrance to a proposed parking lot on Power Street and add two (2) car parking spaces on Power Street, as shown on Exhibit B; and

WHEREAS, parking on Wayne Street near Power Street and on Power Street between Wayne Street and South Division Street primarily serves the Salisbury University athletic facilities; and

WHEREAS, parking is permitted in other locations on Wayne Street and Power Street; and

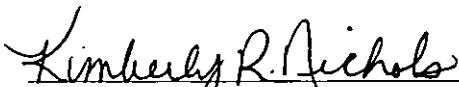
WHEREAS, the Director of Public Works provided the City Council with a recommendation of the proposed parking modifications on Wayne Street and Power Street at the December 1, 2014 City Council work session.

NOW THEREFORE, BE IT ORDAINED BY THE CITY COUNCIL OF THE CITY OF SALISBURY, MARYLAND that the elimination of eleven (11) parking spaces and creation of two (2) bus spaces on Wayne Street and two (2) car parking spaces on Power Street adjacent to the Salisbury University stadium is approved.

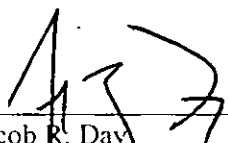
BE IT FURTHER ORDAINED that this ordinance shall take effect immediately.

THIS ORDINANCE was introduced and read at a meeting of the Council of the City of Salisbury held on the 12 day of January, 2015, and thereafter, a statement of the substance of the Ordinance having been published as required by law, was finally passed by the Council on the 26 day of January, 2015.

ATTEST



Kimberly R. Nichols
CITY CLERK



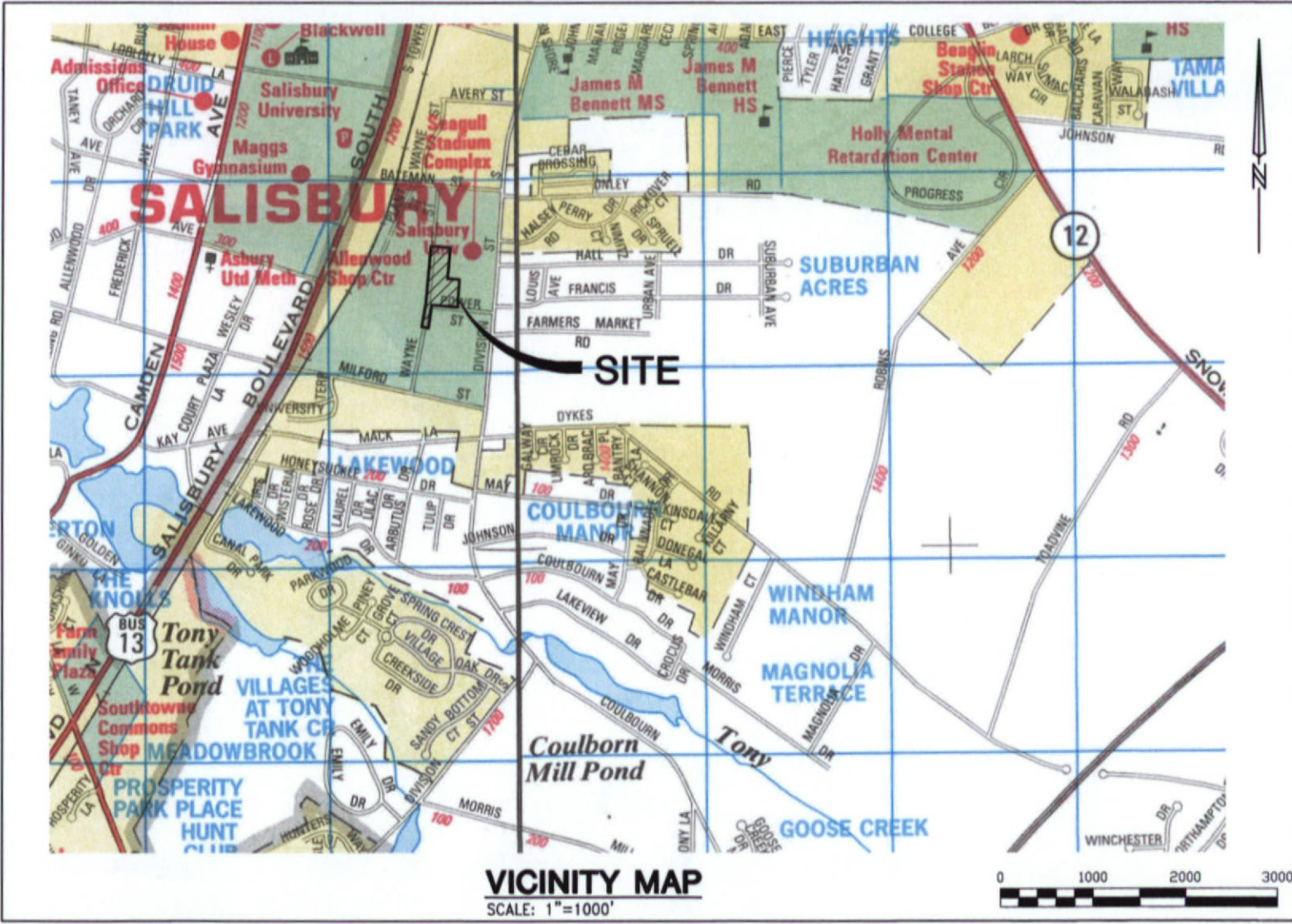
Jacob R. Day
PRESIDENT, City Council

Approved by me this 26th day of January, 2015



James Iketon, Jr. Mayor

P:\1952\1952A002\current working folder\dwg\AND Z - Revised 12-4-14.dwg Dec 05 , 2014 - 11:53am



DAVIS, BOWEN & FRIEDEL, INC. ARCHITECTS ENGINEERS SURVEYORS

S.U. EAST CAMPUS STADIUM WAYNE & POWER STREETS CITY OF SALISBURY, MD

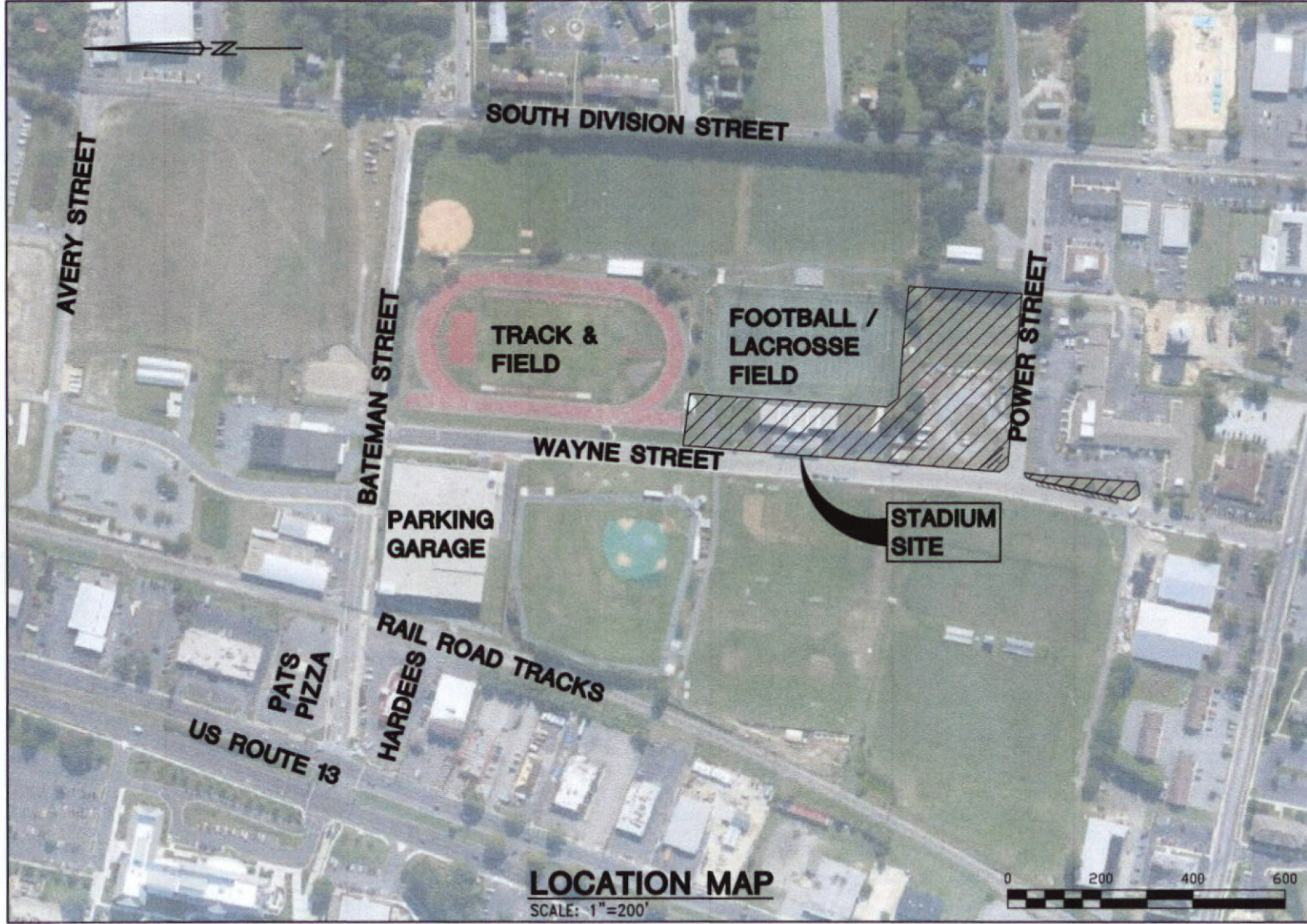
SHEET 1 OF 4

Date: DEC, 2014 Scale: AS SHOWN

Proj.No.: 1952A002

(410) 543-8081
SALISBURY, MARYLAND
(302) 424-1441
MILFORD, DELAWARE
(410) 770-4515
EASTON, MARYLAND

P:\1952\1952A002\current working folder\dwgs\1P AND 2 - Revised 12-4-14.dwg Dec 05, 2014 - 11:53am



LOCATION MAP
SCALE: 1"=200'

SHEET 2 OF 4

DAVIS, BOWEN & FRIEDEL, INC. ARCHITECTS ENGINEERS SURVEYORS

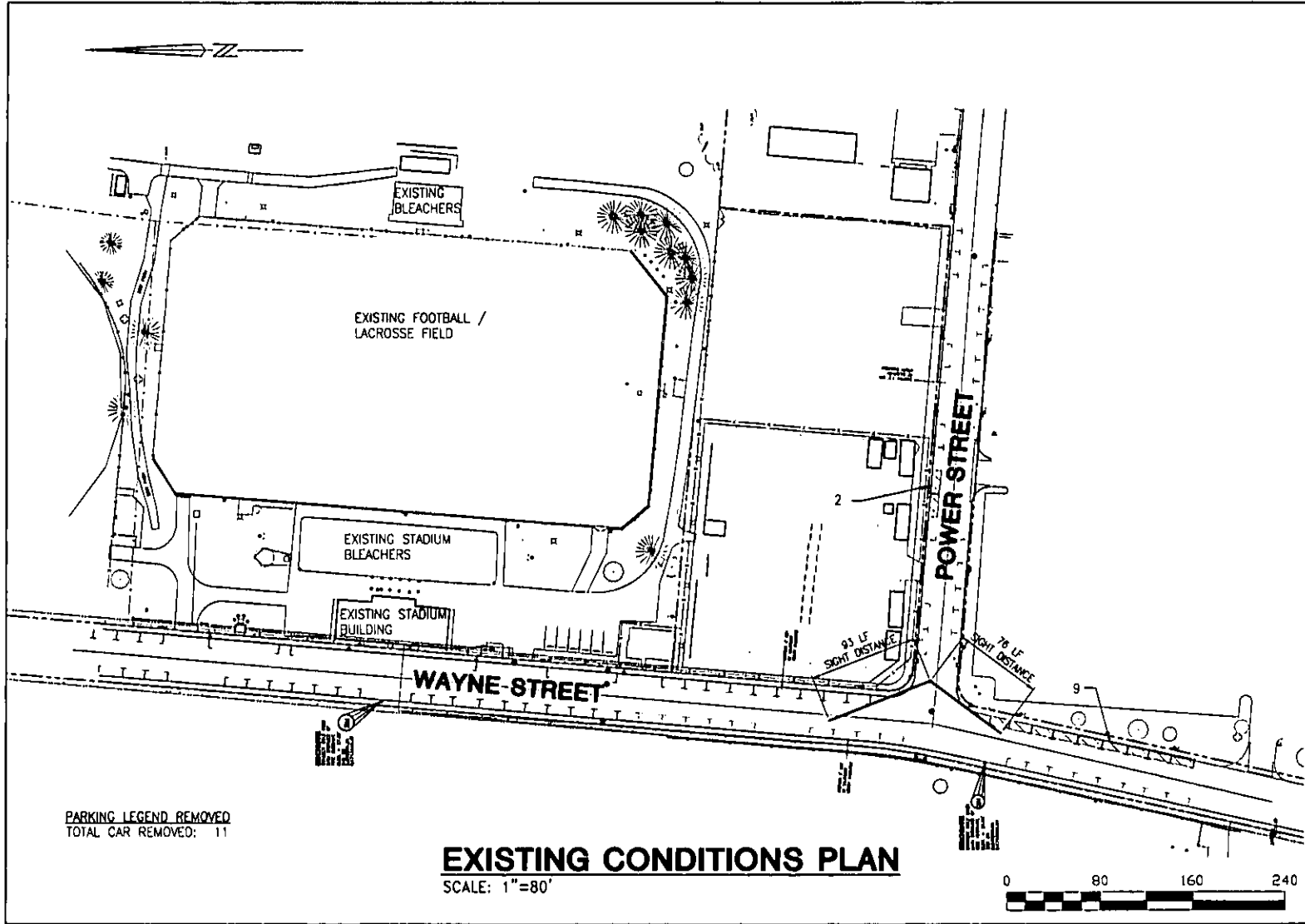


SALISBURY, MARYLAND (410) 543-0099
 MILFORD, DELAWARE (302) 424-1441
 EASTON, MARYLAND (410) 770-4315

**S.U. EAST CAMPUS STADIUM
WAYNE & POWER STREETS
CITY OF SALISBURY, MD**

Date: DEC, 2014 Scale: AS SHOWN Proj.No.: 1952A002

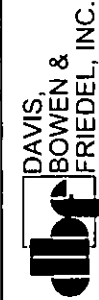
P:\1952\1952A002\current working folders\chaps\ AND 7 - Revised 12-4-14.dwg Dec 05, 2014 - 11:53am



PARKING LEGEND REMOVED
TOTAL CAR REMOVED: 11

EXISTING CONDITIONS PLAN

SCALE: 1"=80'



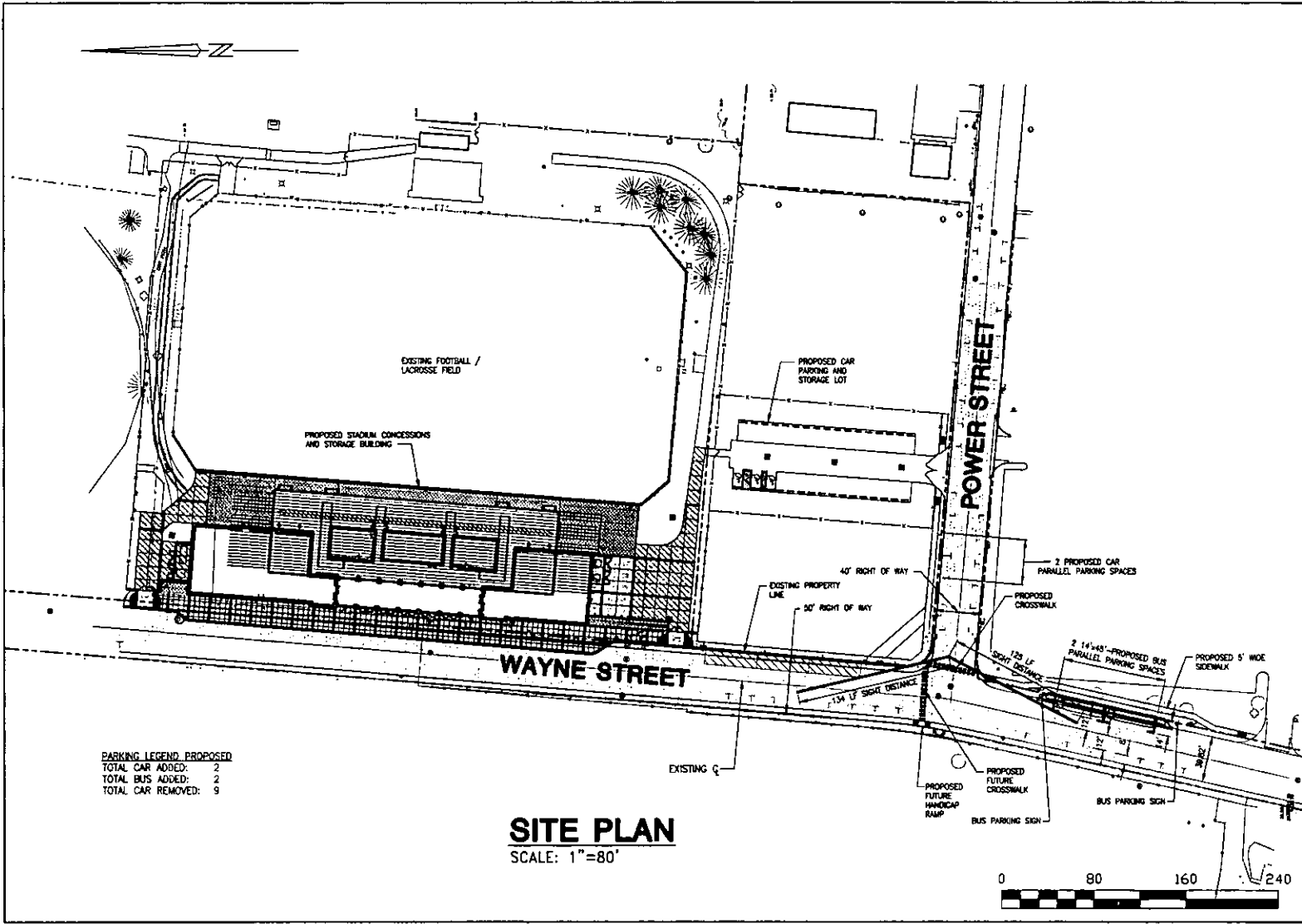
DAVIS,
BOWEN &
FRIEDEL, INC. ARCHITECTS ENGINEERS SURVEYORS
SALISBURY, MARYLAND (410) 843-8001
MILFORD, DELAWARE (302) 424-1441
EASTON, MARYLAND (410) 770-4515

SHEET 3 OF 4

S.U. EAST CAMPUS STADIUM WAYNE & POWER STREETS CITY OF SALISBURY, MD

Date: DEC, 2014 Scale: AS SHOWN Proj.No.: 1952A002

P:\1952\1952A002\current working\dwg\dwgs\SP AND Z - Revised 12-4-14.dwg Dec 05, 2014 - 11:54am



PARKING LEGEND, PROPOSED
 TOTAL CAR ADDED: 2
 TOTAL BUS ADDED: 2
 TOTAL CAR REMOVED: 9

SITE PLAN
 SCALE: 1"=80'

**S.U. EAST CAMPUS STADIUM
 WAYNE & POWER STREETS
 CITY OF SALISBURY, MD**

SHEET 4 OF 4

DAVIS, BOWEN & FRIEDEL, INC. ARCHITECTS ENGINEERS SURVEYORS
 SALISBURY, MARYLAND (410) 543-9981
 MILFORD, DELAWARE (302) 424-1441
 EASTON, MARYLAND (410) 770-4315

Date: DEC, 2014 Scale: AS SHOWN Proj.No.: 1952A002

City of Salisbury



JAMES IRETON, JR.
MAYOR

M. THOMAS STEVENSON, JR.
CITY ADMINISTRATOR

TERENCE ARRINGTON
ASSISTANT CITY ADMINISTRATOR

125 NORTH DIVISION STREET
SALISBURY, MARYLAND 21801
Tel: 410-548-3170
Fax: 410-548-3107

MARYLAND

MICHAEL S. MOULDS, P.E.
DIRECTOR OF PUBLIC WORKS

TO: Tom Stevenson, City Administrator
FROM: Mike Moulds, Director of Public Works
DATE: October 17, 2014
SUBJECT: SU Stadium – Wayne Street and Power Street parking modifications

Attached for consideration is a letter from Salisbury University regarding a request to modify the parking configurations on Wayne Street and Power Street due to the proposed Stadium project. Also attached are sketches of the existing and proposed layouts.

As part of the stadium reconstruction project, SU is requesting consideration to remove a total of forty-two (42) vehicle parallel parking spaces and three (3) bus spaces. The proposed conditions include adding two (2) vehicle parallel parking spaces, two (2) bus spaces and a bus loading/unloading zone. The proposed project also includes increasing the width of the sidewalk in front of the stadium and installing two speed tables. The site plans have recently been submitted to Public Works for review and approval prior to construction. The existing conditions and proposed conditions are summarized below:

Existing Conditions – Request for Removal of spaces

- Wayne Street at stadium: 31 spaces removed
- Wayne Street south of Power Street: 9 spaces removed
- Wayne Street stadium Bus Parking: 3 spaces removed
- Power Street: 2 spaces removed
- Total: 42 car spaces removed and 3 bus spaces removed

Proposed Conditions

- Power Street: 2 spaces added
- Wayne Street Bus Parking: 2 spaces added south of Power Street
- Wayne Street Bus loading/unloading zone (can accommodate 4 buses)
- Total 2 car spaces added and 2 bus spaces added

The existing 3 bus spaces at the stadium were recently created via Ordinance No. 2231 which was passed on February 11, 2013.

Wayne Street between Power Street and Bateman Street is surrounded by Salisbury University property. With the proposed modifications, Public Works would like consideration as an alternative to the request

from Salisbury University to consider abandonment of this section of Wayne Street so that the University can take ownership of the road and modify the parking and sidewalks to suit their needs.

When the City initiates a road abandonment, then the City is responsible to prepare the property survey, utility easement plats and road abandonment ordinance. If the City Council approves the ordinance, then the adjoining owners would be deeded (quit claim deed) the property along their respective frontages to the centerline of the abandoned street.

We would like to review this with you and the Mayor to consider advancing this proposal to a work session of City Council.